

Job Name: 25-4430 KYTC Daviess Co Call 104 (2511035)
 Job Location: Owensboro, KY
 Contractor: Ragle, Inc.

Plant: 100

3/11/2026 2:13:46 PM

Tech: Jared - A

PC: Andy Chambers



Structure ID: 8870 (18)

P1 BX3636-08BAVF

BOX BASE 8inW, 8inF, Variable Ht

- P2) 36" x 36" - P.I.P. - BY OTHERS - 8"
- P1) 36" x 36" - BOX BASE 8inW, 8inF, Variable Ht - 40"
- 1) CASTING - HOE KY-328 SET (DBI 3)
- 1) Hole - 30

0 lb
 6018 lb
 328 lb
 0 lb

 Structure Total: 6346 lb

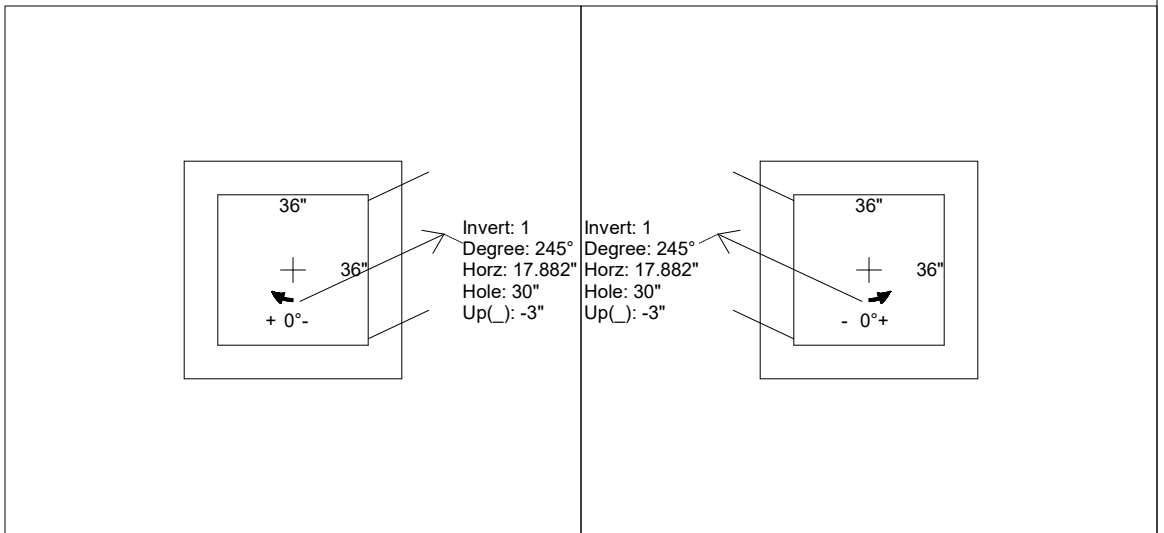
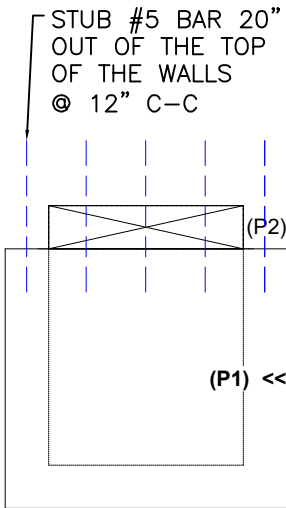
- Structure Notes:**
 KYTC STATE PROJECT
 1. HOE KY-328 SET (DBI 3) PROVIDED BY ICAST.
 2. KYTC DBI TYPE 3
 3. PER ASTM C-913
 4. DBI 3 F&G (BY CONTR)
 5. STUB #5 BARS 20" OUT TOP OF WALLS (SPA@12"C/C)
 6. REINFORCING PER ASTM A615 (GRADE 60).
 - WALLS (As .31) #5 BARS AT 12" C.C.E.W.
 - FLOOR (As .31) #5 BARS AT 12" C.C.E.W.

Rim: 448.65' Rim to Invert: 4' Slack: 0" Sump: 0" Step Position:

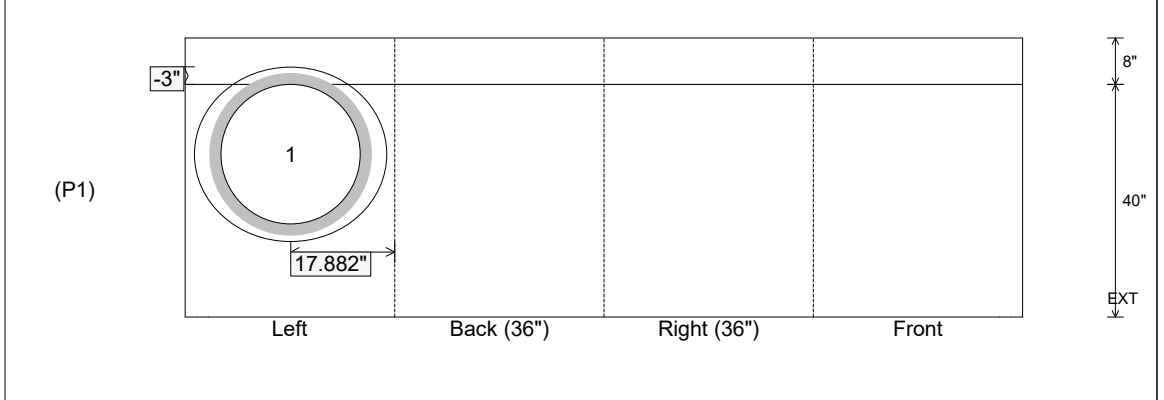
Position	Elev	Angle	Ext. (cw)	Pipe	Pipe OD	Connector	Hole	Horz Size	Up ()	Offset
Invert 1	444.65'	245°	22.151"	24" HDPE	27.8"	Hole 30	30"	33.101"	-3"	7.5"
Invert 2										
Invert 3										
Invert 4										
Invert 5										
Invert 6										
Invert 7										
Invert 8										

RIGHT-SIDE UP VIEW (int. dimensions)

UPSIDE-DOWN VIEW (int. dimensions)



INSIDE WALL DIMENSIONS



Coating (Int):
 Coating (Ext):

Seam Up: Flat
 Seam Dn: n/a

Wall Thickness: 8"
 Floor Height: 8"

Height (Int): 40"
 Height (Ext): 48"

Weight (Net): 6018 lb
 Volume (Net): 1.54cu.yd