

Job Name: 25-4430 KYTC Daviess Co Call 104 (2511035)
 Job Location: Owensboro, KY
 Contractor: Ragle, Inc.

Plant: 100
 3/11/2026 2:14:43 PM

Tech: Jared - A
 PC: Andy Chambers



Structure ID: 7230 (30)

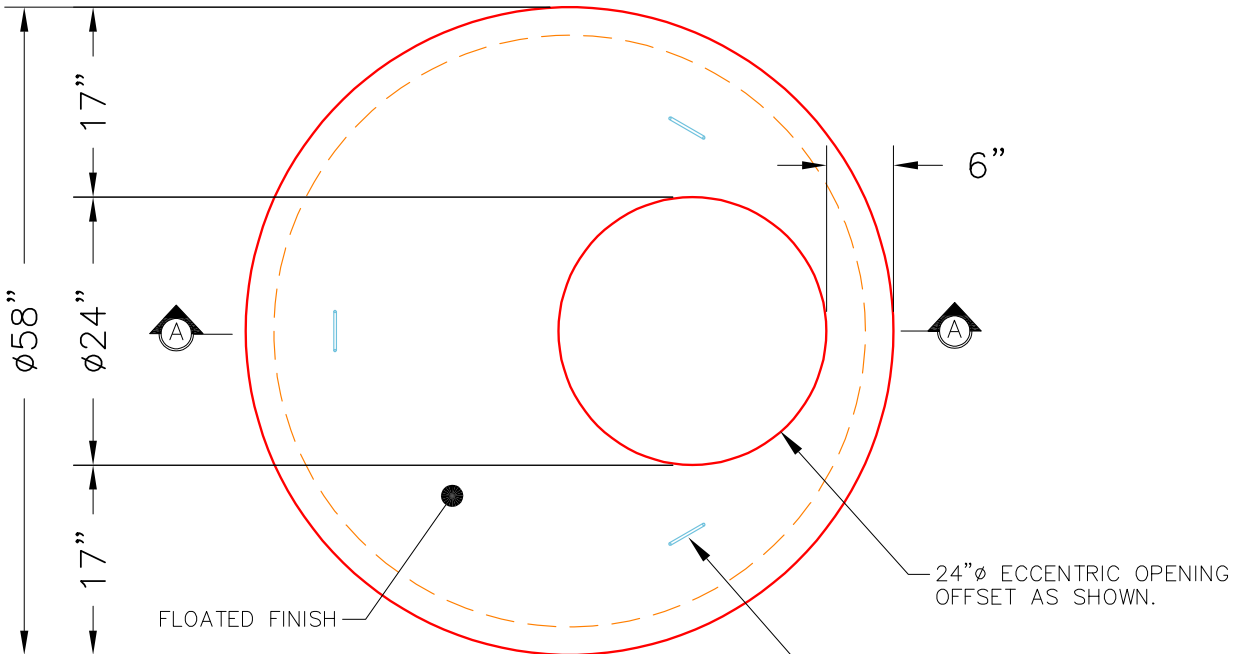
P3 MH048LD12ECC

MH FLAT LID w/24in ECC Hole

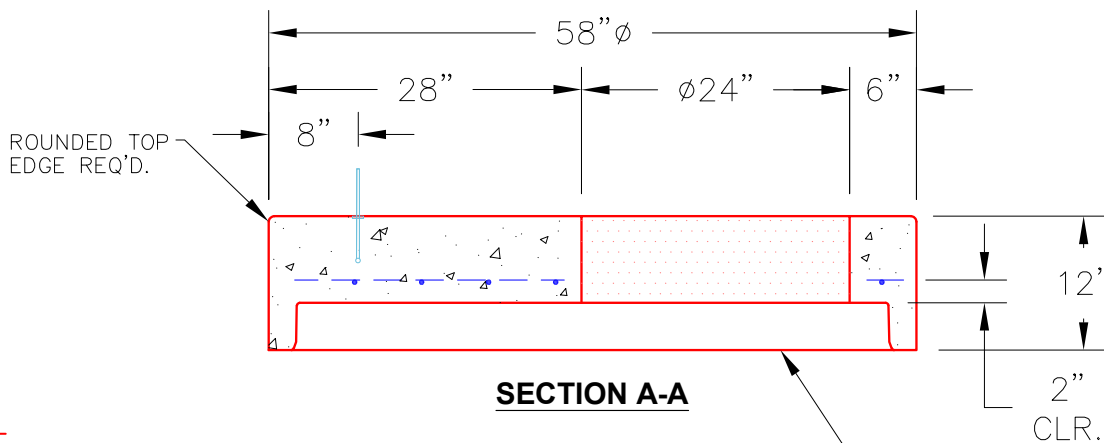
- P4) 24" - CASTING HEIGHT - 8"
- P3) 48" - MH FLAT LID w/24in ECC Hole - 12"
- P2) 48" - MH RISER - 36"
- P1) 48" - MH BASE Custom Ht - 46"
- 1) CASTING - HOE KY-510 F/C (KY TY.2)
- 2) 48" - Conseal CS-102 1.00"
- 2) Hole - 24"
- 7) MH Step ML-10-TDS-NCR - 10"

Structure Notes:
 KYTC STATE PROJECT
 1. HOE KY-510 F/C (KY TY2) PROVIDED BY ICAST.
 2. PER KYTC MH A / ASTM C478 SPEC'S.
 3. CONCRETE = 4,000 PSI AT 28 DAYS.
 4. REINFORCING PER ASTM A615 (GRADE 60.)
 - TOP SLAB (As .62) #5 BARS AT 6" C.C.E.W.
 - RISER/WALLS (As .12)
 - FLOOR (As .31) #5 BARS AT 12" C.C.E.W.

Structure Total: 8735 lb



PLAN VIEW



SECTION A-A

NOTES:

- 1. MANUFACTURED TO ASTM C-478 (LATEST REVISION).
- 2. CONCRETE: 5,000 PSI AT 28 DAYS.
- 3. REINFORCING: #4 BAR @ 10" O.C. E.W. (GRADE 60).

| | | | | |
|----------------------------------|----------------------------------|--------------------|-------------------|---|
| Coating (Int): Coating (Ext): | Seam Up: Flat Seam Dn: Groove | Wall Thickness: 5" | Height (Ext): 12" | Weight (Net): 1561 lb Volume (Net): 0.4cu.yd |
|----------------------------------|----------------------------------|--------------------|-------------------|---|