

Job Name: 25-4430 KYTC Daviess Co Call 104 (2511035)
 Job Location: Owensboro, KY
 Contractor: Ragle, Inc.

Plant: 100

3/11/2026 2:14:42 PM

Tech: Jared - A

PC: Andy Chambers



Structure ID: 7101 (29)

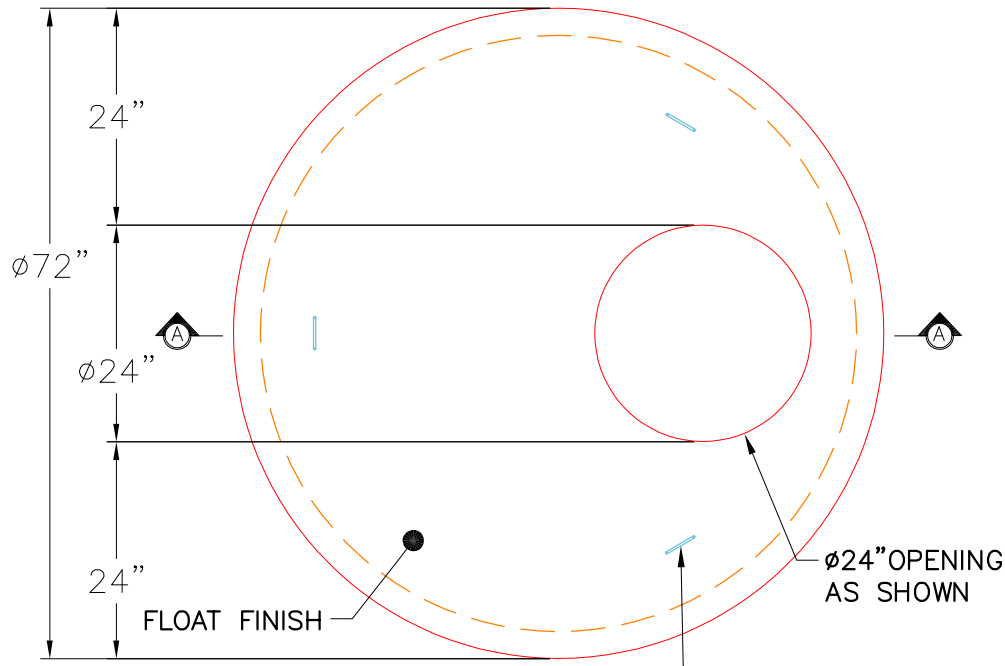
P2 MH060LD13

MH FLAT LID w/24in ECC Hole

- P3) 24" - CASTING HEIGHT - 8"
- P2) 60" - MH FLAT LID w/24in ECC Hole - 13"
- P1) 60" - MH BASE Custom Ht - 70"
- 1) CASTING - HOE KY-510 F/C (KY TY.2)
- 1) 60" - Conseal CS-102 1.00"
- 1) Hole - 44
- 1) Hole - 38
- 1) Hole - 30
- 1) Hole - 24
- 6) MH Step ML-10-TDS-NCR - 10"

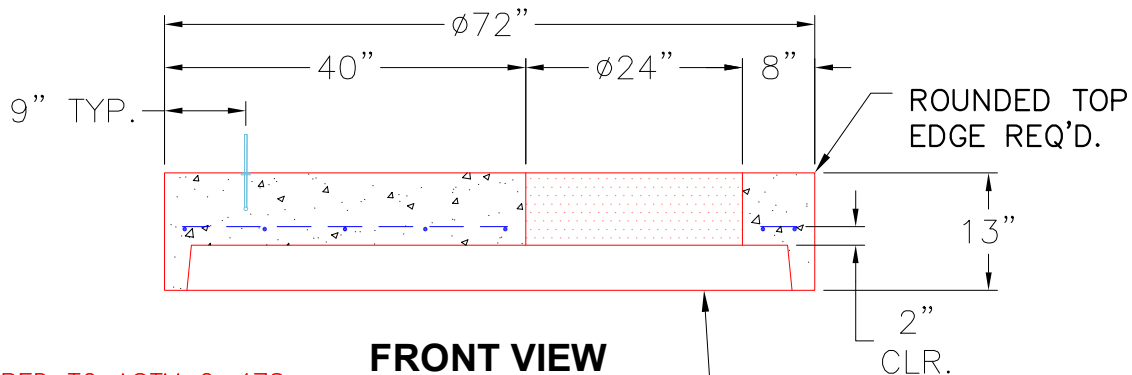
- Structure Notes:
- **KYTC STATE PROJECT**
 - 1. HOE KY-510 F/C (KY TY.2) PROVIDED BY ICAST.
 - 2. PER KYTC MH A / ASTM C478 SPEC'S.
 - 3. CONCRETE = 4,000 PSI AT 28 DAYS.
 - 4. REINFORCING PER ASTM A615 (GRADE 60.)
 - TOP SLAB (As .62) #5 BARS AT 6" C.C.E.W.
 - RISER/WALLS (As .12)
 - FLOOR (As .31) #5 BARS AT 12" C.C.E.W.

Structure Total: 11291 lb



TOP VIEW

3 EA. CONAC .8 TON 8¹/₁₆" (6MM) WIRE ROPE ANCHORS REQUIRED. - MINIMUM.



FRONT VIEW

NOTES:

- 1. MANUFACTURED TO ASTM C-478 (LATEST REVISION).
- 2. CONCRETE: 4,000 PSI AT 28 DAYS.
- 3. REINFORCING: #5 BAR @ 6" O.C. E.W. (GRADE 60).

Coating (Int): Coating (Ext):	Seam Up: Flat Seam Dn: Groove	Wall Thickness: 6"	Height (Ext): 13"	Weight (Net): 2800 lb Volume (Net): 0.69cu.yd
----------------------------------	----------------------------------	--------------------	-------------------	--