

Job Name: 25-4430 KYTC Daviess Co Call 104 (2511035)  
 Job Location: Owensboro, KY  
 Contractor: Ragle, Inc.

Plant: 100

3/11/2026 2:14:41 PM

Tech: Jared - A

PC: Andy Chambers



**Structure ID: 6093L (25)**

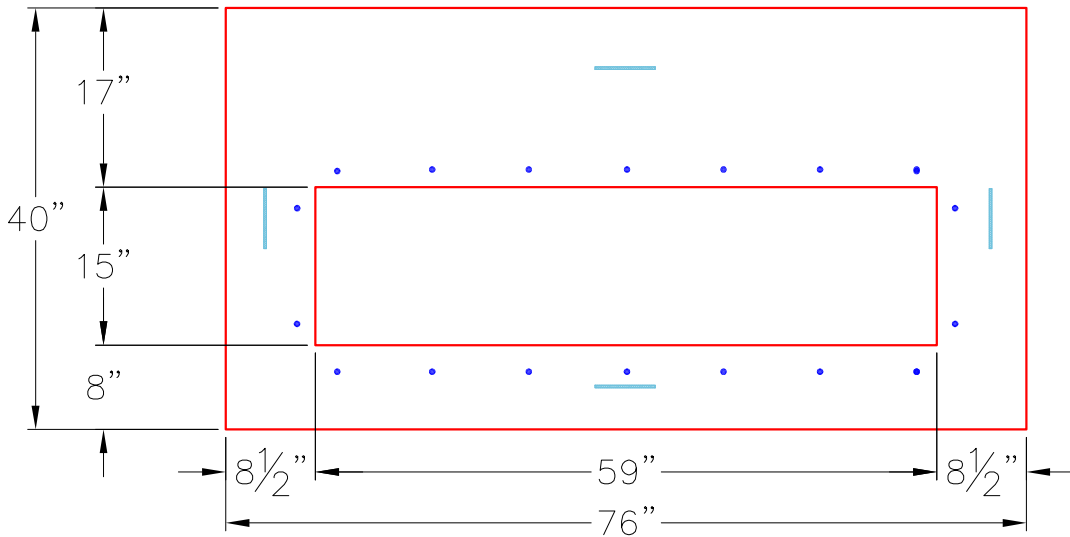
**P2 BX024060-08LD08-1559**

**BX FLAT LID 8inW, w/15"x59" HOLE (KYTC DBI-13S)**

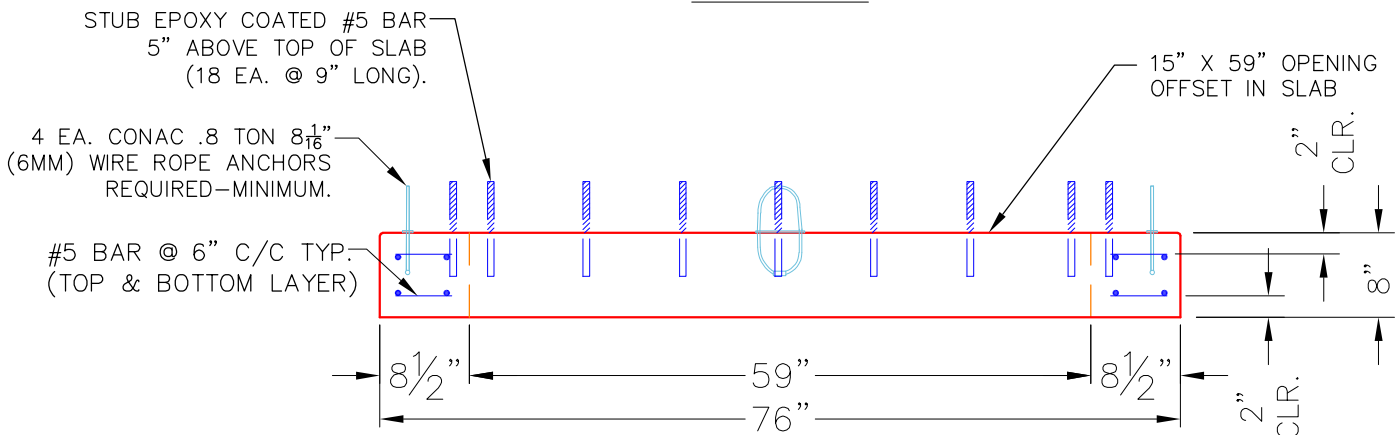
- P3) 15" x 59" - P.I.P. - BY OTHERS - 8"
- P2) 24" x 60" - BX FLAT LID 8inW, w/15"x59" HOLE (KYTC DBI-13S) - 8"
- P1) 24" x 60" - BOX BASE 8inW, 8inF, Variable Ht - 39"
- 1) CASTING - HOE KY-230-S F/G (SAG)
- 1) SECONDARY POUR - Walls
- 1) 24" x 60" - Conseal CS-102 1.00"
- 1) Hole - 24
- 2) Hole - 4

	0 lb
	1461 lb
	6889 lb
	474 lb
	0 lb
	0 lb
	0 lb
	0 lb
Structure Total:	8824 lb

**Structure Notes:**  
 \*\*KYTC STATE PROJECT\*\*  
 1. HOE KY-230-S F/G (SAG) PROVIDED BY ICAST.  
 2. KYTC DBI TYPE 13S / ASTM C-913 SPEC'S.  
 3. CONCRETE = 4,000 PSI AT 28 DAYS.  
 4. NO INVERT CHANNEL.  
 5. REINFORCING PER ASTM A615 (GRADE 60).  
 - TOP SLAB (As .62) #5 BARS AT 6" C.C.E.W. (DBL MAT).  
 - WALLS (As .31) #5 BARS AT 12" C.C.E.W..  
 - FLOOR (As .31) #5 BARS AT 12" C.C.E.W.  
 6. STUB #5 BARS 12" OUT OF THE TOP OF THE SLAB (SPACED AT 12" CC) AROUND THE 15" X 59".



**TOP VIEW**



**FRONT VIEW**

- NOTES:**
- CONCRETE: 4500 PSI @ 28 DAYS.
  - MANUFACTURED TO KYTC & ASTM C-913 SPECIFICATIONS.
  - REINFORCING: #5 BAR AS SHOWN-GRADE 60. (T&B LAYER)
  - 4 EA. CONAC WIRE LOOP LIFTS REQUIRED (MIN.)

Coating (Int):	Seam Up: Flat	Wall Thickness: 8"	Height (Ext): 8"	Weight (Net): 1461 lb
Coating (Ext):	Seam Dn: Flat			Volume (Net): 0.37cu.yd