

Job Name: 25-4430 KYTC Daviess Co Call 104 (2511035)
 Job Location: Owensboro, KY
 Contractor: Ragle, Inc.

Plant: 100

3/11/2026 2:14:41 PM

Tech: Jared - A

PC: Andy Chambers



Structure ID: 6090R (24)

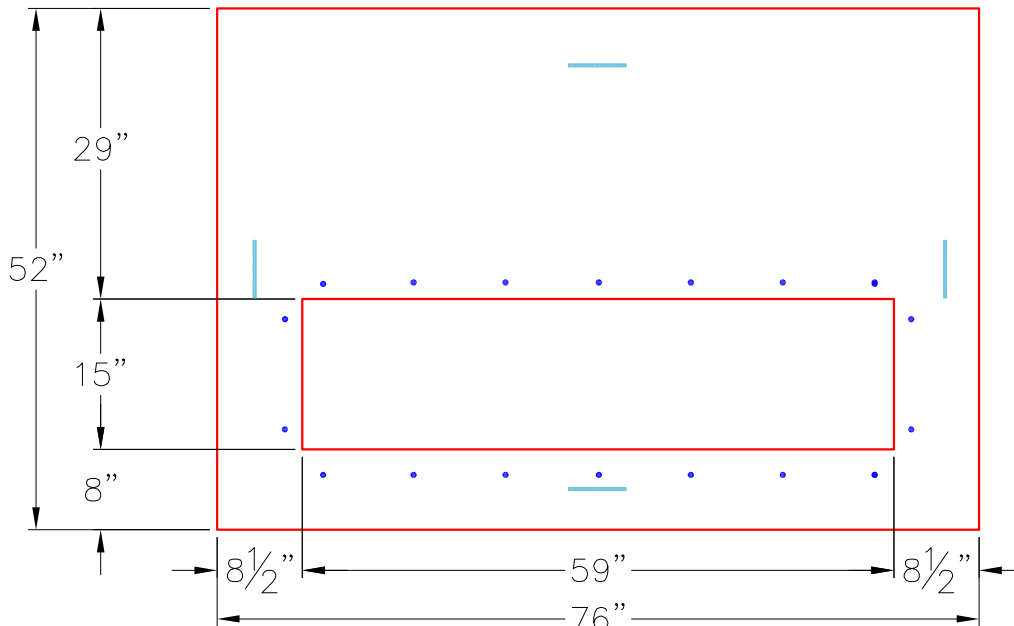
P2 BX036060-08LD08-1559

BX FLAT LID 8inW, w/15"x59" HOLE (KYTC DBI-13S)

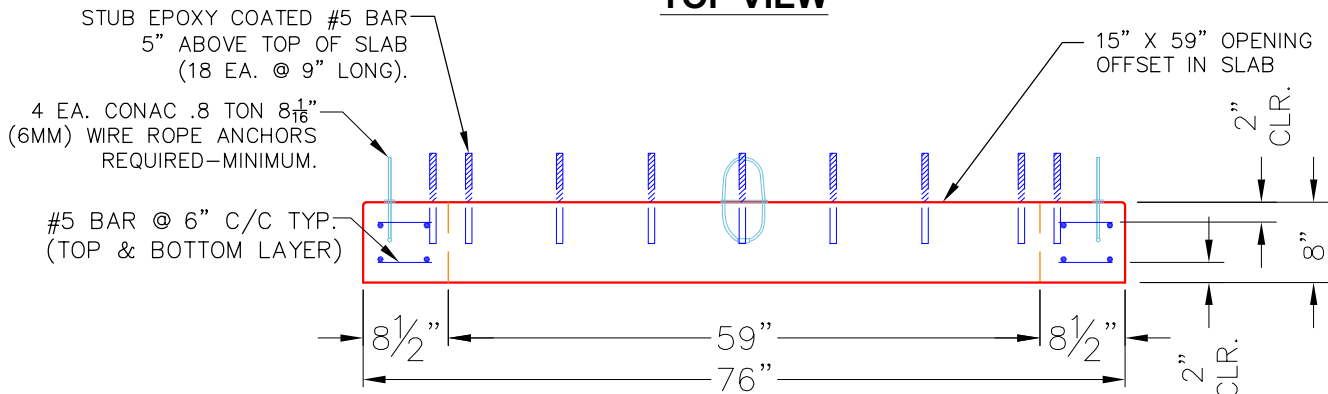
- P3) 15" x 59" - P.I.P. - BY OTHERS - 8"
- P2) 36" x 60" - BX FLAT LID 8inW, w/15"x59" HOLE (KYTC DBI-13S) - 8"
- P1) 36" x 60" - BOX BASE 8inW, 8inF, Variable Ht - 44"
- 1) CASTING - HOE KY-230-S F/G (SAG)
- 1) SECONDARY POUR - Walls
- 1) 36" x 60" - Conseal CS-102 1.00"
- 3) Hole - 24
- 2) Hole - 4

Structure Total:

- | | |
|----------|---|
| 0 lb | Structure Notes: |
| 1461 lb | **KYTC STATE PROJECT** |
| 8322 lb | 1. HOE KY-230-S F/G (SAG) PROVIDED BY ICAST. |
| 474 lb | 2. KYTC DBI TYPE 13S / ASTM C-913 SPEC'S. |
| 0 lb | 3. CONCRETE = 4,000 PSI AT 28 DAYS. |
| 0 lb | 4. NO INVERT CHANNEL. |
| 0 lb | 5. REINFORCING PER ASTM A615 (GRADE 60). |
| 0 lb | - TOP SLAB (As .62) #5 BARS AT 6" C.C.E.W. (DBL MAT). |
| 10257 lb | - WALLS (As .31) #5 BARS AT 12" C.C.E.W.. |
| | - FLOOR (As .31) #5 BARS AT 12" C.C.E.W. |
| | 6. STUB #5 BARS 12" OUT OF THE TOP OF THE SLAB (SPACED AT 12" CC) AROUND THE 15" X 59". |



TOP VIEW



FRONT VIEW

- NOTES:**
- CONCRETE: 4500 PSI @ 28 DAYS.
 - MANUFACTURED TO KYTC & ASTM C-913 SPECIFICATIONS.
 - REINFORCING: #5 BAR AS SHOWN-GRADE 60. (T&B LAYER)
 - 4 EA. CONAC WIRE LOOP LIFTS REQUIRED (MIN.)

Coating (Int):	Seam Up: Flat	Wall Thickness: 8"	Height (Ext): 8"	Weight (Net): 1461 lb
Coating (Ext):	Seam Dn: Flat			Volume (Net): 0.37cu.yd