

Job Name: 25-4430 KYTC Daviess Co Call 104 (2511035)
 Job Location: Owensboro, KY
 Contractor: Ragle, Inc.

Plant: 100
 3/11/2026 2:14:43 PM

Tech: Jared - A
 PC: Andy Chambers



Structure ID: 6001R (31)

P2 MH048LD12ECC

MH FLAT LID w/24in ECC Hole

- P3) 24" - CASTING HEIGHT - 8"
- P2) 48" - MH FLAT LID w/24in ECC Hole - 12"
- P1) 48" - MH BASE Custom Ht - 65"
- 1) CASTING - HOE KY-510 F/C (KY TY.2)
- 1) 48" - Conseal CS-102 1.00"
- 2) Hole - 24"
- 5) MH Step ML-10-TDS-NCR - 10"

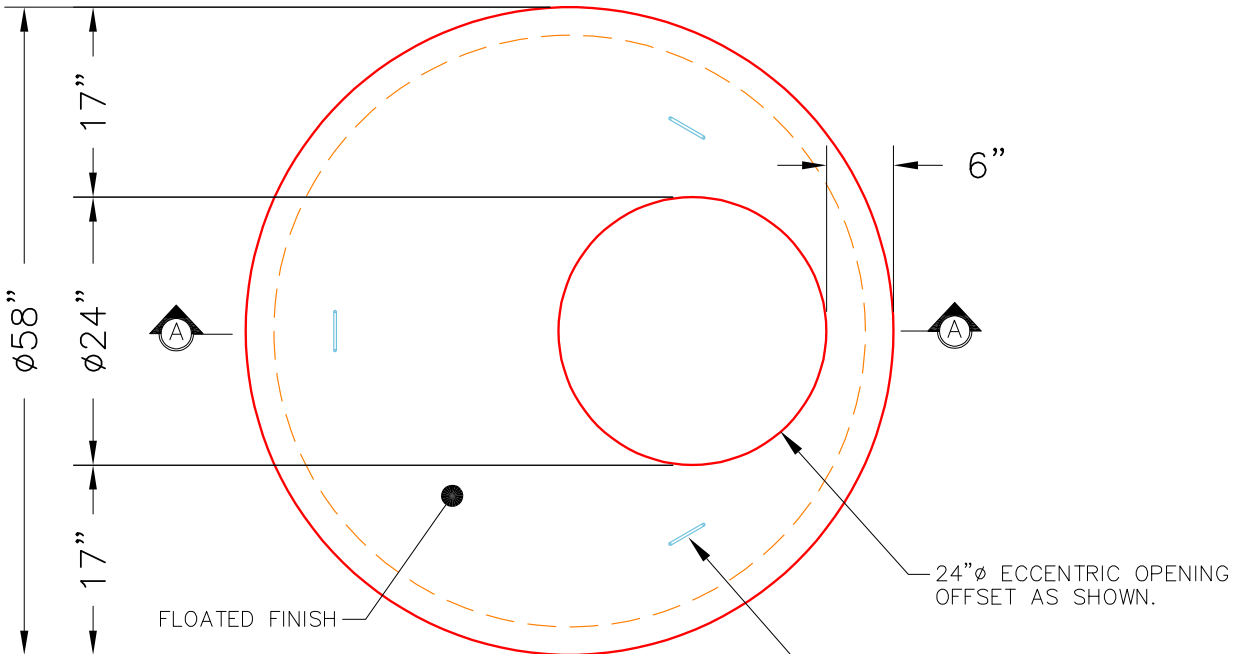
Structure Total:

0 lb
 1561 lb
 5477 lb
 510 lb
 0 lb
 0 lb
 0 lb

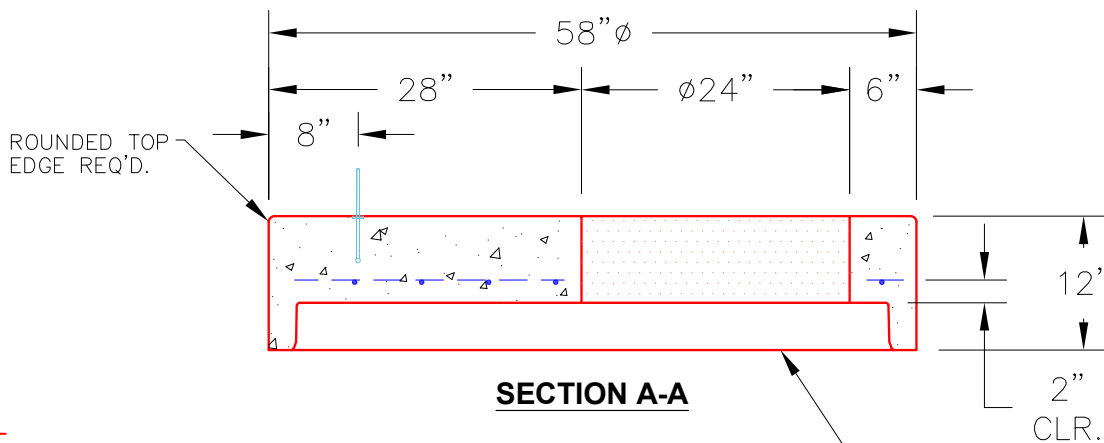
 7548 lb

Structure Notes:

- **KYTC STATE PROJECT**
- 1. HOE KY-510 F/C (KY TY2) PROVIDED BY ICAST.
- 2. PER KYTC MH A / ASTM C478 SPEC'S.
- 3. CONCRETE = 4,000 PSI AT 28 DAYS.
- 4. REINFORCING PER ASTM A615 (GRADE 60.)
 - TOP SLAB (As .62) #5 BARS AT 6" C.C.E.W.
 - RISER/WALLS (As .12)
 - FLOOR (As .31) #5 BARS AT 12" C.C.E.W.
- 5. VERIFY THE STRUCTURE NAME.



PLAN VIEW



SECTION A-A

NOTES:

- 1. MANUFACTURED TO ASTM C-478 (LATEST REVISION).
- 2. CONCRETE: 5,000 PSI AT 28 DAYS.
- 3. REINFORCING: #4 BAR @ 10" O.C. E.W. (GRADE 60).

Coating (Int): Coating (Ext):	Seam Up: Flat Seam Dn: Groove	Wall Thickness: 5"	Height (Ext): 12"	Weight (Net): 1561 lb Volume (Net): 0.4cu.yd
----------------------------------	----------------------------------	--------------------	-------------------	---