

Job Name: 25-4430 KYTC Daviess Co Call 104 (2511035)  
 Job Location: Owensboro, KY  
 Contractor: Ragle, Inc.

Plant: 100  
 3/11/2026 2:14:42 PM

Tech: Jared - A  
 PC: Andy Chambers



**Structure ID: 4831 (28)**

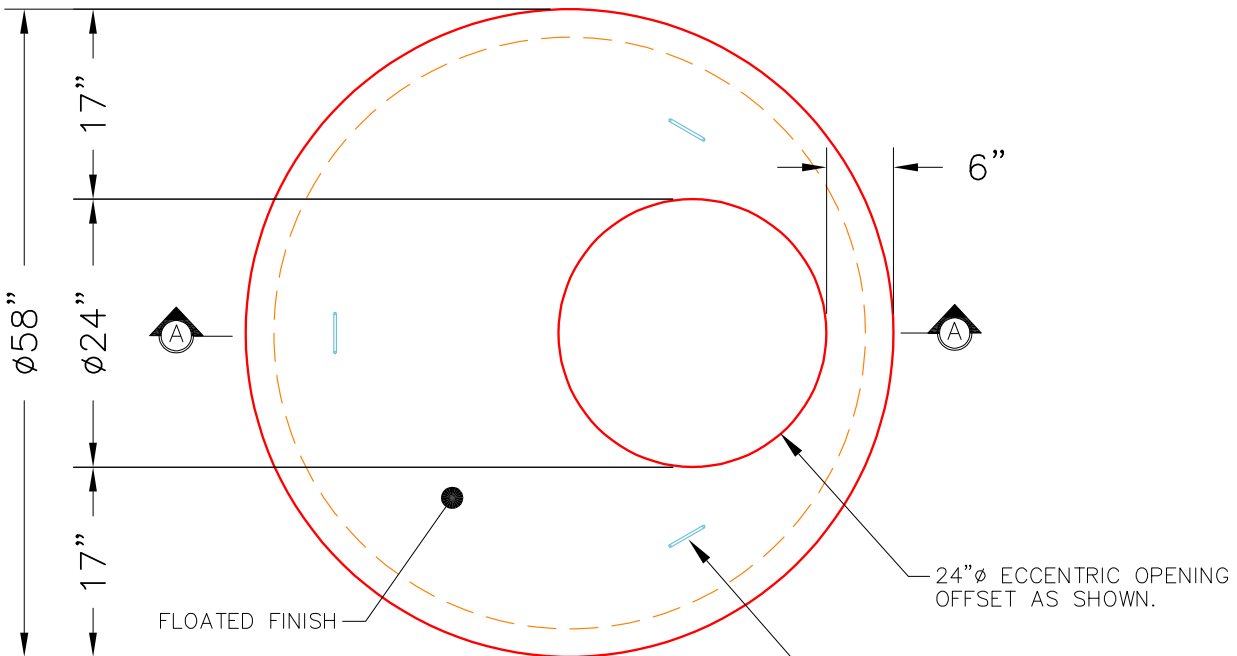
**P3 MH048LD12ECC**

**MH FLAT LID w/24in ECC Hole**

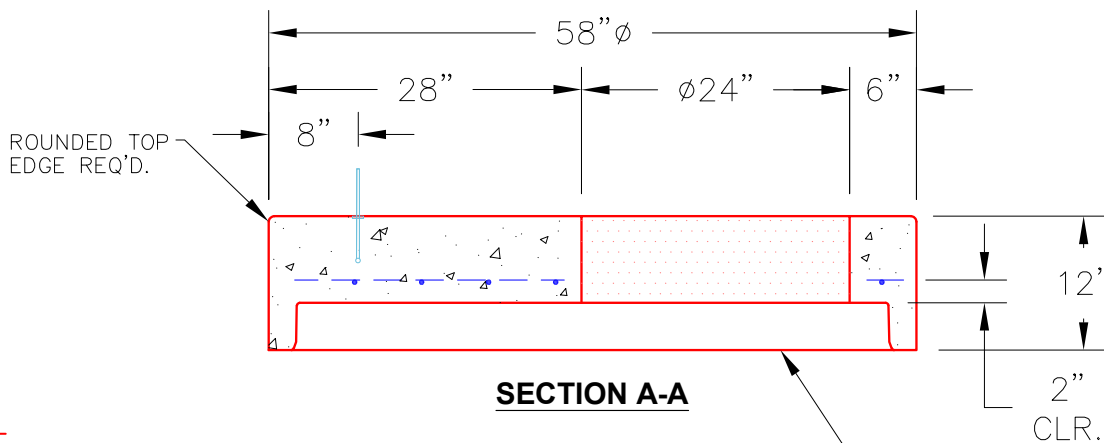
- P4) 24" - CASTING HEIGHT - 8"
- P3) 48" - MH FLAT LID w/24in ECC Hole - 12"
- P2) 48" - MH RISER - 36"
- P1) 48" - MH BASE - 48"
- 1) CASTING - HOE KY-510 F/C (KY TY.2)
- 2) 48" - Conseal CS-102 1.00"
- 2) Hole - 30
- 2) Hole - 24
- 7) MH Step ML-10-TDS-NCR - 10"

- 0 lb Structure Notes:  
 1561 lb \*\*KYTC STATE PROJECT\*\*  
 2515 lb 1. HOE KY-510 F/C (KY TY2) PROVIDED BY ICAST.  
 3648 lb 2. PER KYTC MH A / ASTM C478 SPEC'S.  
 510 lb 3. CONCRETE = 4,000 PSI AT 28 DAYS.  
 0 lb 4. REINFORCING PER ASTM A615 (GRADE 60.)  
 0 lb - TOP SLAB (As .62) #5 BARS AT 6" C.C.E.W.  
 0 lb - RISER/WALLS (As .12)  
 0 lb - FLOOR (As .31) #5 BARS AT 12" C.C.E.W.

Structure Total: 8234 lb



**PLAN VIEW**



**SECTION A-A**

**NOTES:**

- 1. MANUFACTURED TO ASTM C-478 (LATEST REVISION).
- 2. CONCRETE: 5,000 PSI AT 28 DAYS.
- 3. REINFORCING: #4 BAR @ 10" O.C. E.W. (GRADE 60).

Coating (Int): Coating (Ext):	Seam Up: Flat Seam Dn: Groove	Wall Thickness: 5"	Height (Ext): 12"	Weight (Net): 1561 lb Volume (Net): 0.4cu.yd
----------------------------------	----------------------------------	--------------------	-------------------	---