

Job Name: 25-4429 - KYTC Carter Co Call 102 (251120)
 Job Location: Grayson, KY 41143
 Contractor: Allard Excavation, LLC.

Plant: Beaver Dam, KY
 2/2/2026 9:56:30 AM

Tech: J. Horsley - A
 PC: Trevor Lewis



Structure ID: DB5(16)

P2 BX024024-08LD08-14

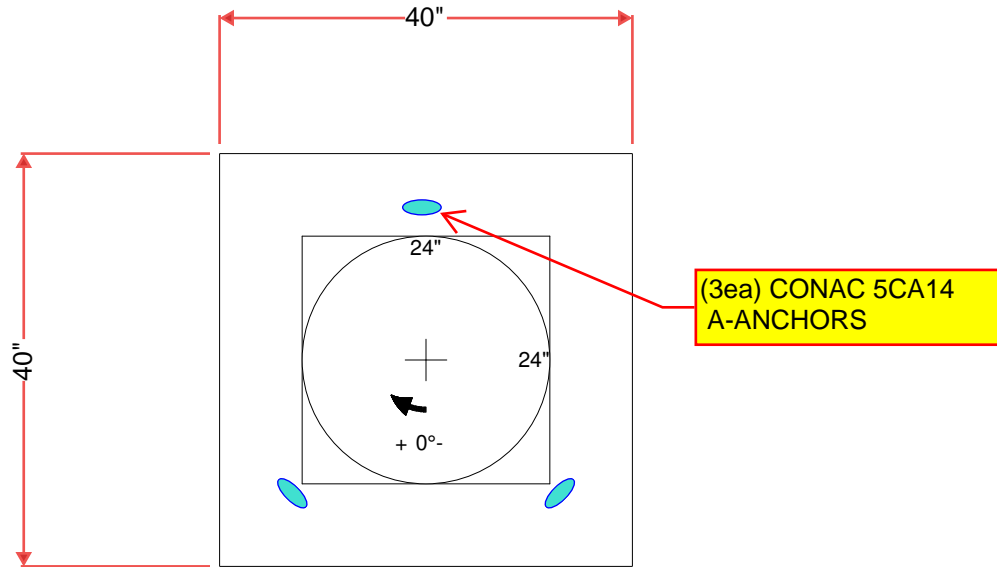
CB FLAT TOP 8"W (HOE KY-210) F/F

- P2) 24" x 24" - CB FLAT TOP 8"W (HOE KY-210) F/F - 8"
- P1) 24" x 24" - BOX BASE 8inW, 8inF, Variable Ht F/n - 22"
- 1) CASTING - HOE KY-210 F/G (DBI 14)
- 1) 24" x 24" - Conseal CS-102 1.00"
- 2) Hole - 20

770 lb
 2543 lb
 178 lb
 0 lb
 0 lb

 Structure Total: 3491 lb

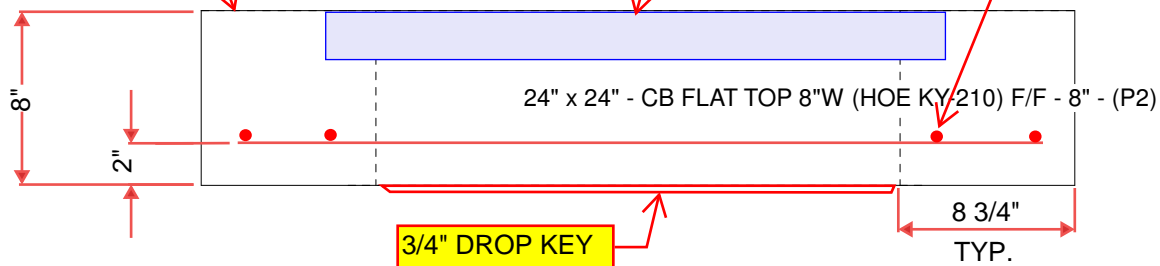
Structure Notes:
 ** KYTC STATE PROJECT**
 PLAN LABEL: DBI TY 14 STA. 65+00
 1. HOE KY-210 F/G (DBI 14) PROVIDED BY ICAST.
 2. KYTC DBI TYPE 14 / ASTM C913 SPECIFICATIONS
 3. CONCRETE = 4,000 PSI AT 28 DAYS.
 4. NO INVERT CHANNEL.
 5. DBI-14 F/G CAST INTO TOP SLAB (HOE KY-210 F/G).
 6. REINFORCING PER ASTM A615 (GRADE 60).
 - TOP SLAB (As .62) #5 BARS AT 6" C.C.E.W.
 - WALLS (As .31) #5 BARS AT 12" C.C.E.W.
 - FLOOR (As .31) #5 BARS AT 12" C.C.E.W.



LITE BRUSH FINISH ON TOP SURFACE

HOE KY-210 F/C CAST INTO CENTER OF TOP SLAB

#5 BARS AT 6" C.C.E.W



Coating (Int): Coating (Ext):	Seam Up: Flat Seam Dn: Flat	Wall Thickness: 8"	Height (Ext): 8"	Weight (Net): 770 lb Volume (Net): 0.2cu.yd
----------------------------------	--------------------------------	--------------------	------------------	--