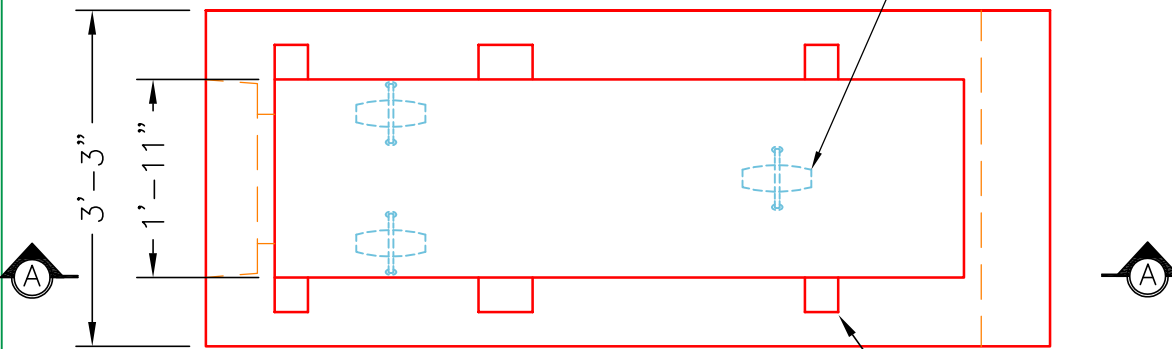
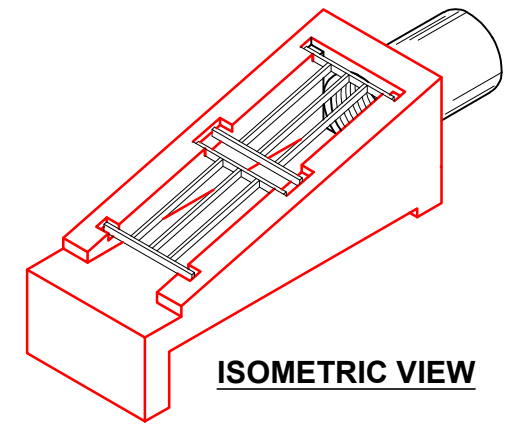


"A-ANCHOR" LIFTING SYSTEM FOR PLANT & FIELD HANDLING.



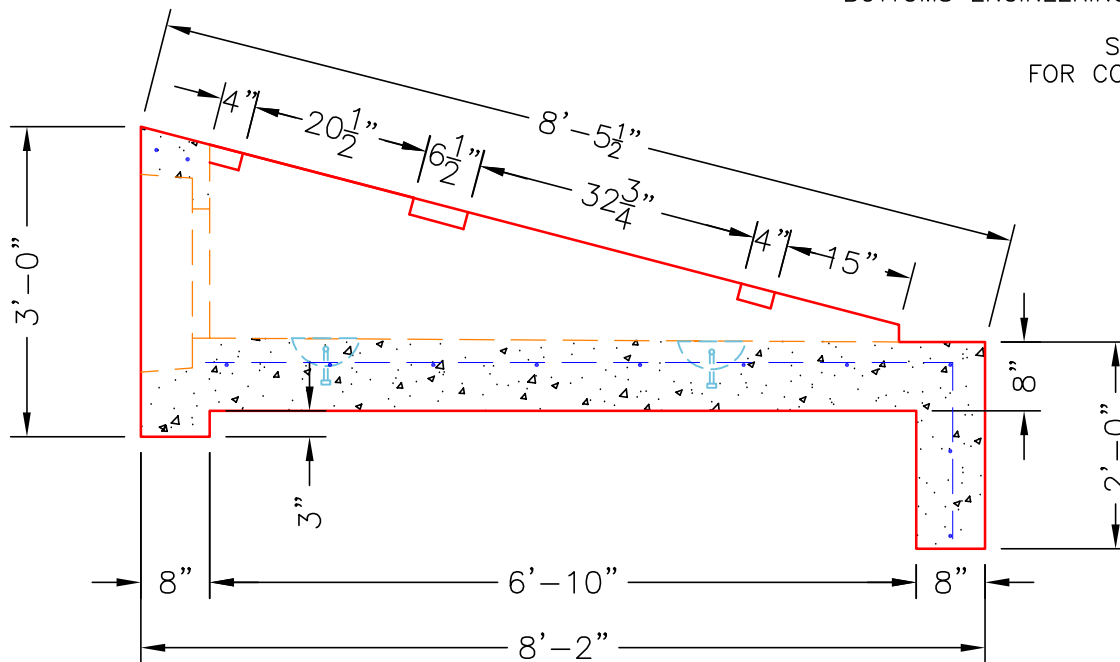
PLAN VIEW

SLOTS AS REQUIRED FOR STRUCTURAL STEEL GRATES (NOT SHOWN) AS SUPPLIED BY BOTTOMS ENGINEERING OR J.R. HOE & SONS.



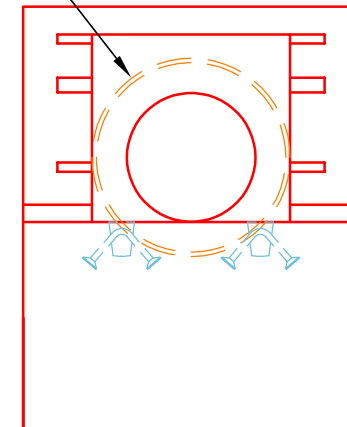
ISOMETRIC VIEW

54429(6) - (1x) 18" Sloped Box Outlet Type 1



SECTION A-A

STEPPED HOLE FORMER FOR CORRESPONDING PIPE Ø. (PIPE O.D. + 3"-4")



FRONT ELEVATION

~NOTES:

1. CONCRETE: KYTC APPROVED.
2. REINFORCING: #5 BAR @ 12" C/C E.W.-GRADE 60, (WITH 2" CONCRETE COVER MINIMUM)
3. REINFORCING BARS TO BE TACK WELDED OR TIED.
4. PIPE AND LIFTING ANCHOR POCKETS TO BE GROUTED WITH KYTC APPROVED NON-SHRINK GROUT.
5. DRAWING TO BE USED IN CONJUNCTION WITH KYTC STD. DRAWINGS RDB-100-05 & RDB-101-05 AND THE STANDARD SPECIFICATIONS FOR ROAD AND BRIDGE CONSTRUCTION.
6. 3/4" CHAMFER ON ALL EXPOSED EDGES.
7. PREFORMED STEPPED HOLE SIZED AS PER O.D. OF PIPE + 3"-4".

INFRASTRUCTURE PRECAST, INC.

981 WEST 7TH ST., BEAVER DAM, KY. 42320
PHONE: (270) 363-2238, FAX: (270) 298-7424

KYTC 12"-18" SLOPED BOX OUTLET (TYPE 1)

DRAWING NO.: KYTC 12"-18" SBO DATE: 07-19-21

REVIEWED BY: J.H. ROSS, PE

DRAWN BY: N. RICHARDS

WEB: WWW.ICASTINC.COM

SCALE: NTS

