

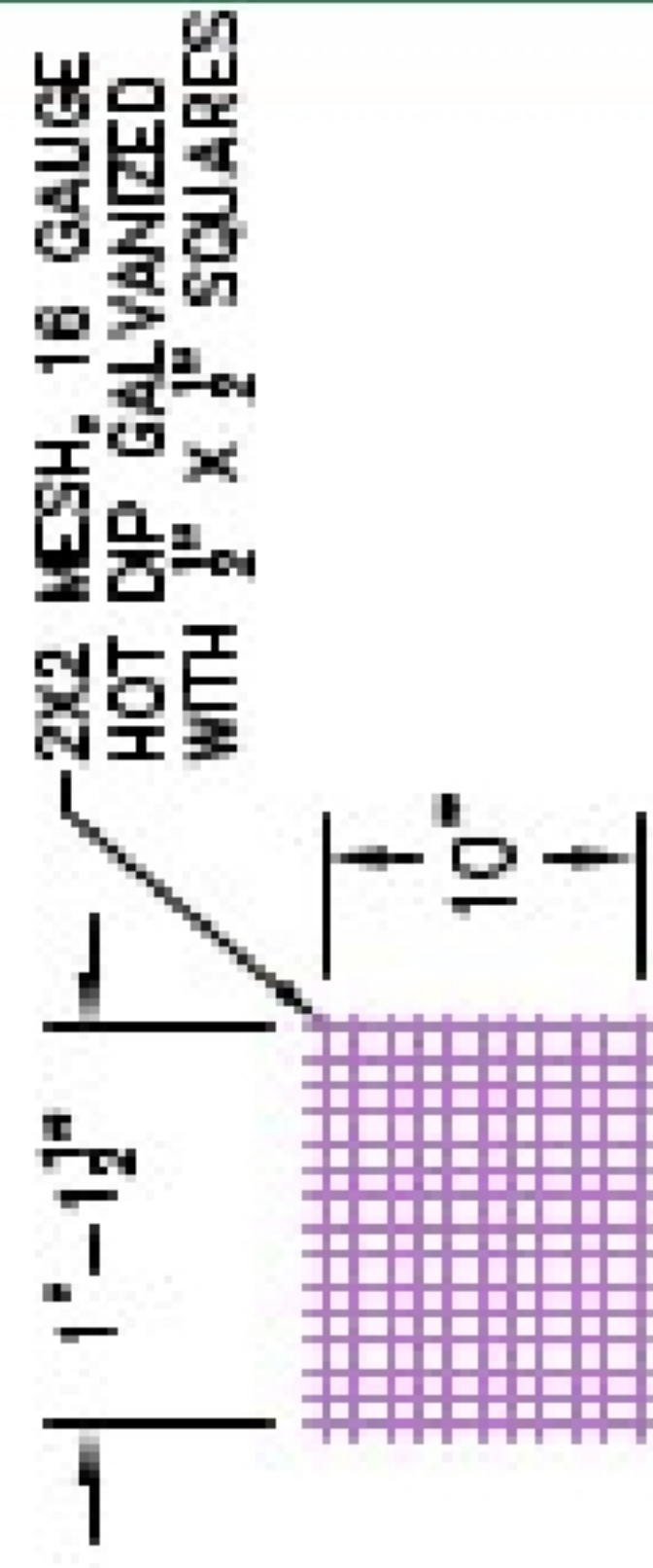


Structure ID: 54429(3)

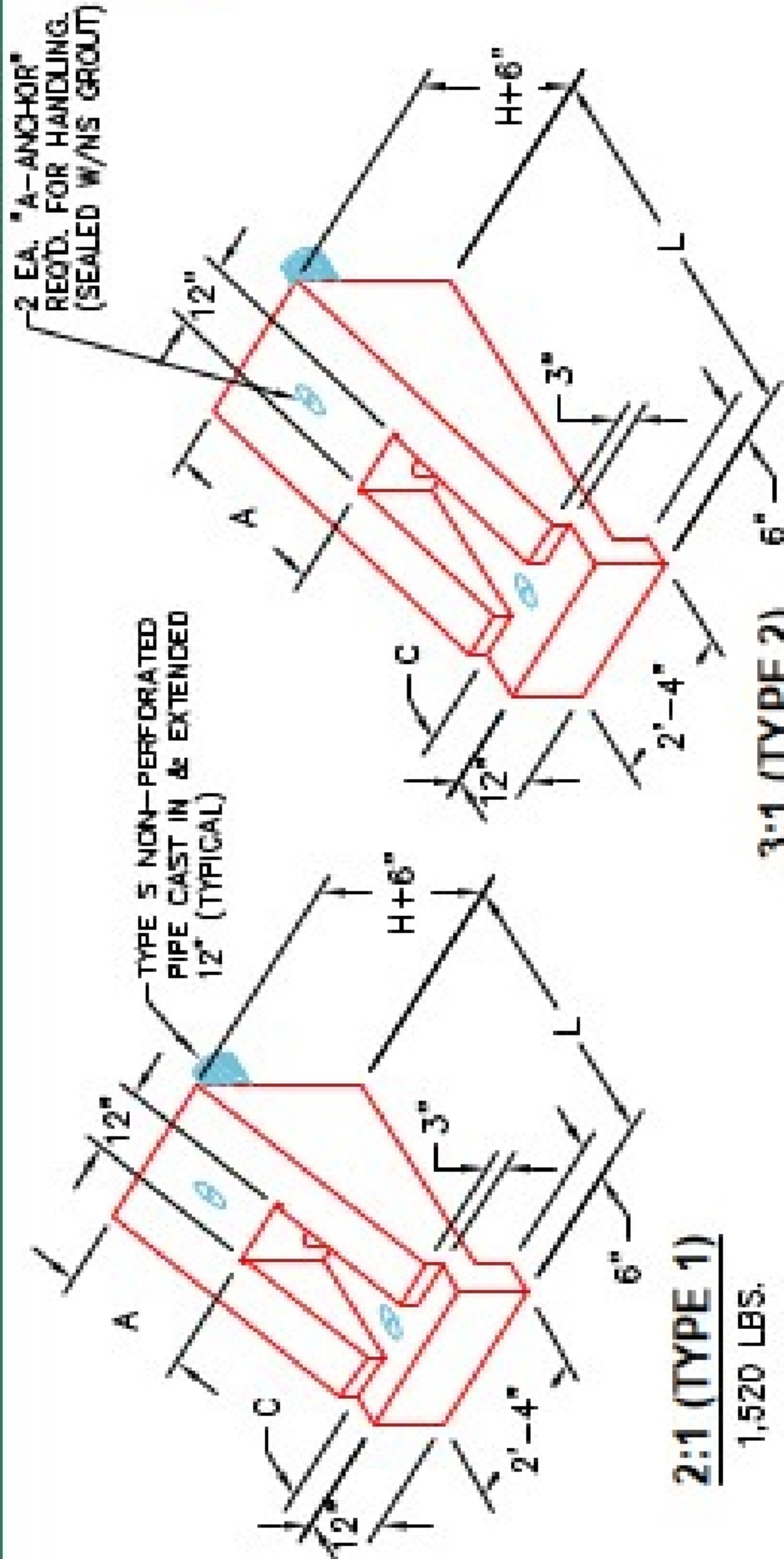
P1 HWPP414TY3

4" - HW Perforated Pipe Type 3 (4 to1) F/F

PIPE DIA.	SLOPE	DIMENSIONS			CLASS "A" CONCRETE	ELL YDS.
		L	H	A		
4"	2 : 1	3'-4 1/4"		1'-6"	6"	0.38
	3 : 1	5'-1 1/4"	1'-8 1/4"	2'-3"	9"	0.56
6"	4 : 1	6'-9 3/4"	3'-0"	1'-0"	1'-0"	0.74
	6 : 1	7'-2 1/4"	1'-2 1/4"	1'-6"	1'-6"	0.62
8"	2 : 1	3'-9 1/2"		1'-6"	6"	0.43
	3 : 1	5'-8 1/4"	1'-10 3/4"	2'-3"	9"	0.63
	4 : 1	7'-7"	1'-4 3/4"	3'-0"	1'-0"	0.83
10"	6 : 1	8'-4 1/2"	1'-4 3/4"	1'-6"	1'-6"	0.73
	2 : 1	4'-2"		1'-6"	6"	0.47
	3 : 1	6'-3"	2'-1"	2'-3"	9"	0.69
	4 : 1	8'-4"	3'-0"	3'-0"	1'-0"	0.91
	6 : 1	9'-6"	1'-7"	1'-6"	1'-6"	0.83



DETAIL "A"

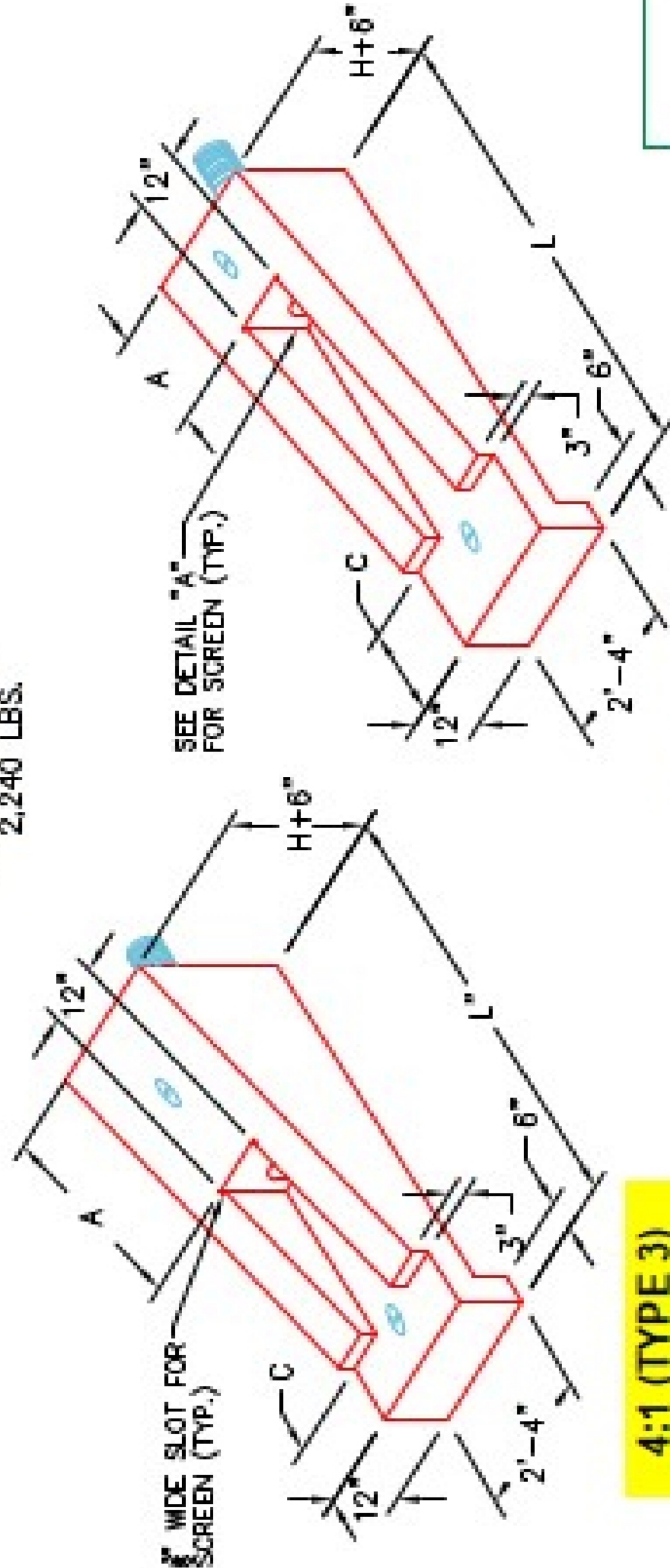


2:1 (TYPE 1)

1,520 LBS.

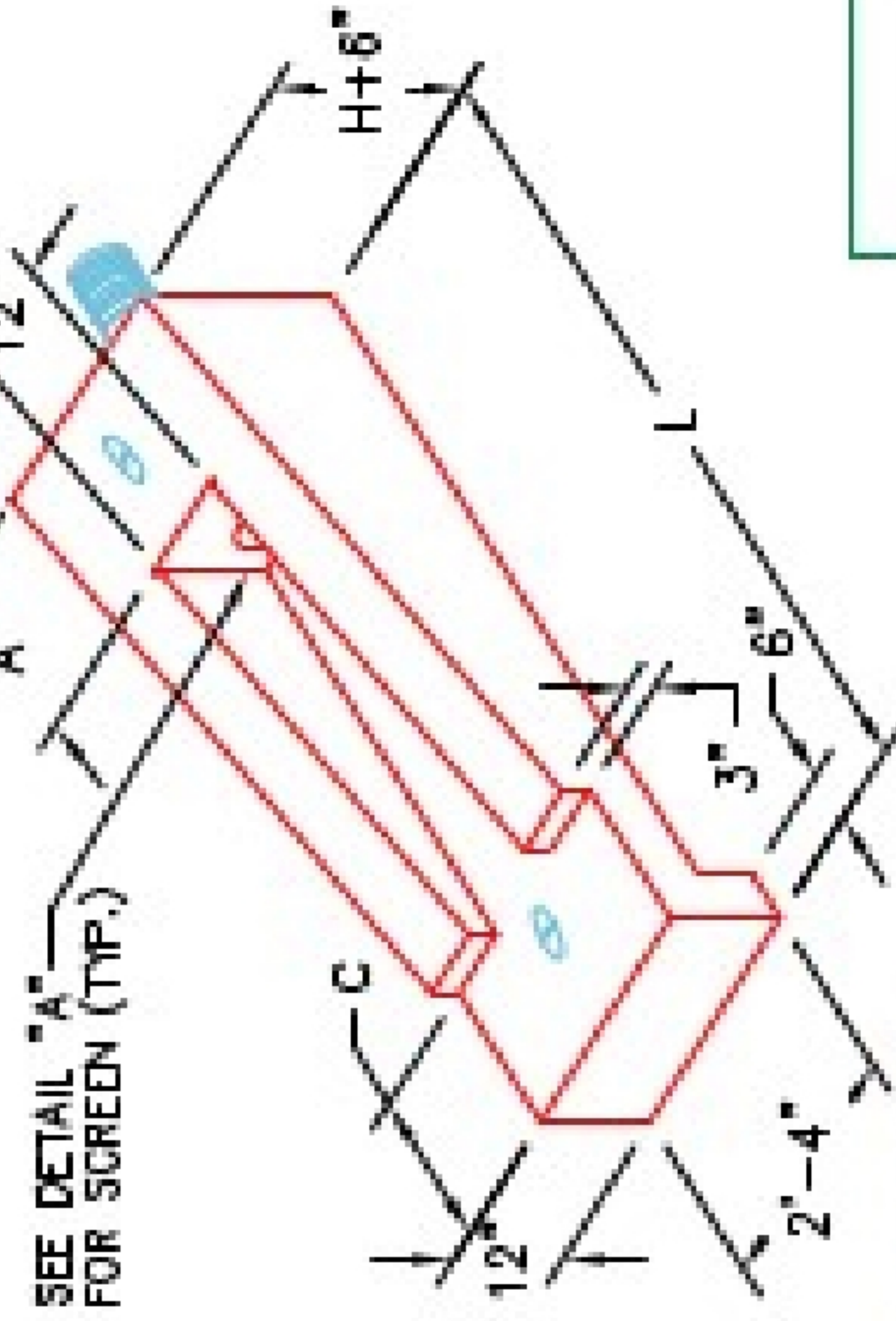
3:1 (TYPE 2)

2,240 LBS.



4:1 (TYPE 3)

2,960 LBS.



6:1 (TYPE 4)

2,480 LBS.

NOTES:

1. CONCRETE: KYTC APPROVED.
2. REINFORCING: #4 BAR @ 12" C/C E.W. - GRADE 60, (WITH 2" CONCRETE COVER MINIMUM)
3. REINFORCING BARS TO BE TACK WELDED OR TIED.
4. PIPE AND LIFTING ANCHOR POCKETS TO BE GROUTED WITH KYTC APPROVED NON-SHRINK GROUT.
5. DRAWING TO BE USED IN CONJUNCTION WITH KYTC STD. DRAWING RDP-010-09 AND THE STANDARD SPECIFICATIONS FOR ROAD AND BRIDGE CONSTRUCTION.
6. 3/4" CHAMFER ON ALL EXPOSED EDGES.

APPROVED FOR DESIGN ONLY

Approved
 AS PER SPECIFICATION 10.10
 KYTC DIV OF CONSTRUCTION
 2/2/2026

DIVISION OF CONSTRUCTION



INFRASTRUCTURE PRECAST, INC.
 951 WEST 7TH ST., BEAVER DAM, KY. 40009
 P-O-BOX: (202) 363-2038, FAX: (202) 368-7404

KYTC PERFORATED PIPE HEADWALLS

DRAWING NO: KYTC PP-HW DATE: 12-07-21
 REVISION BY: J.A. MOSS, P.E. DRAWN BY: M. RICHARDS
 WEB: WWW.IPCAST.COM SCALE: N/A