

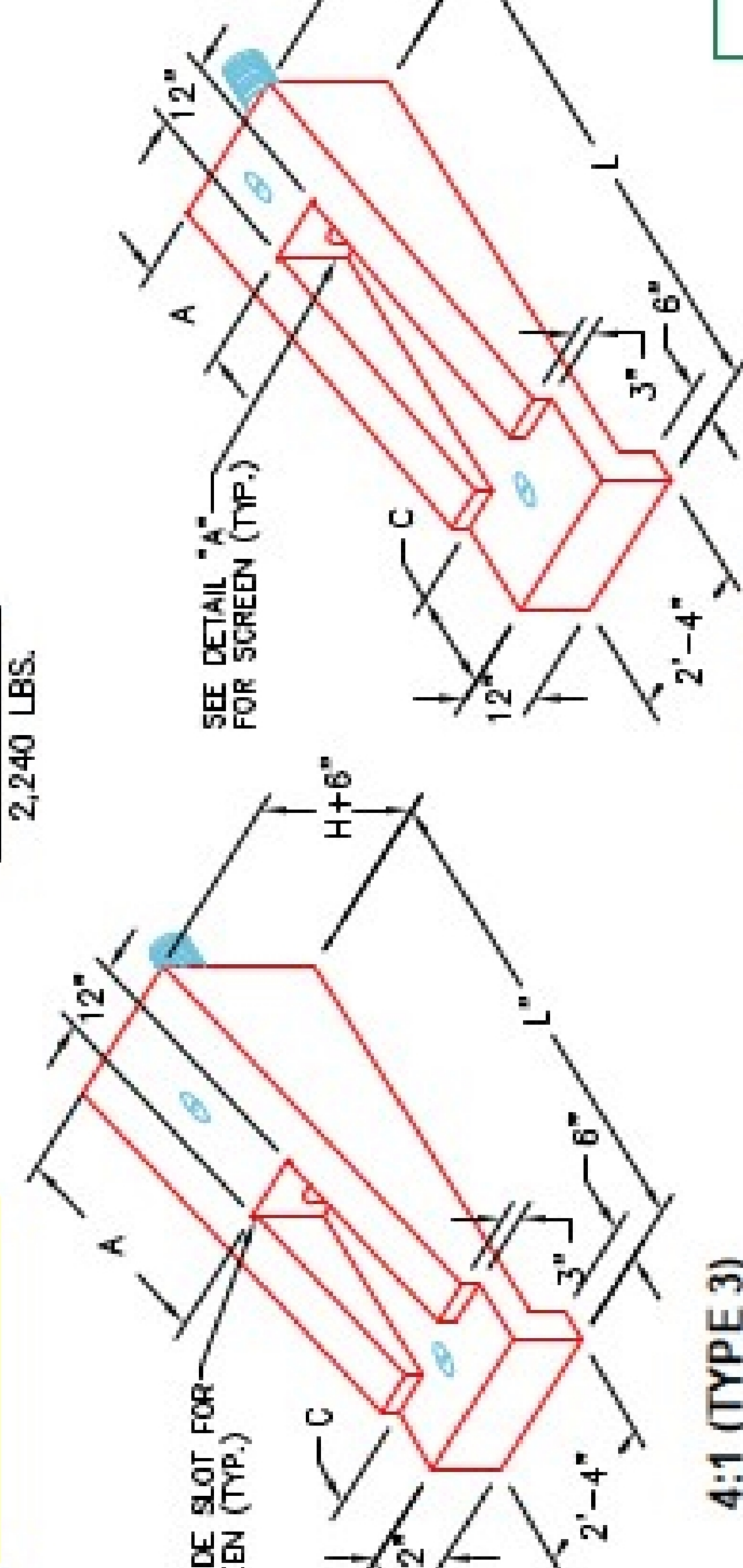
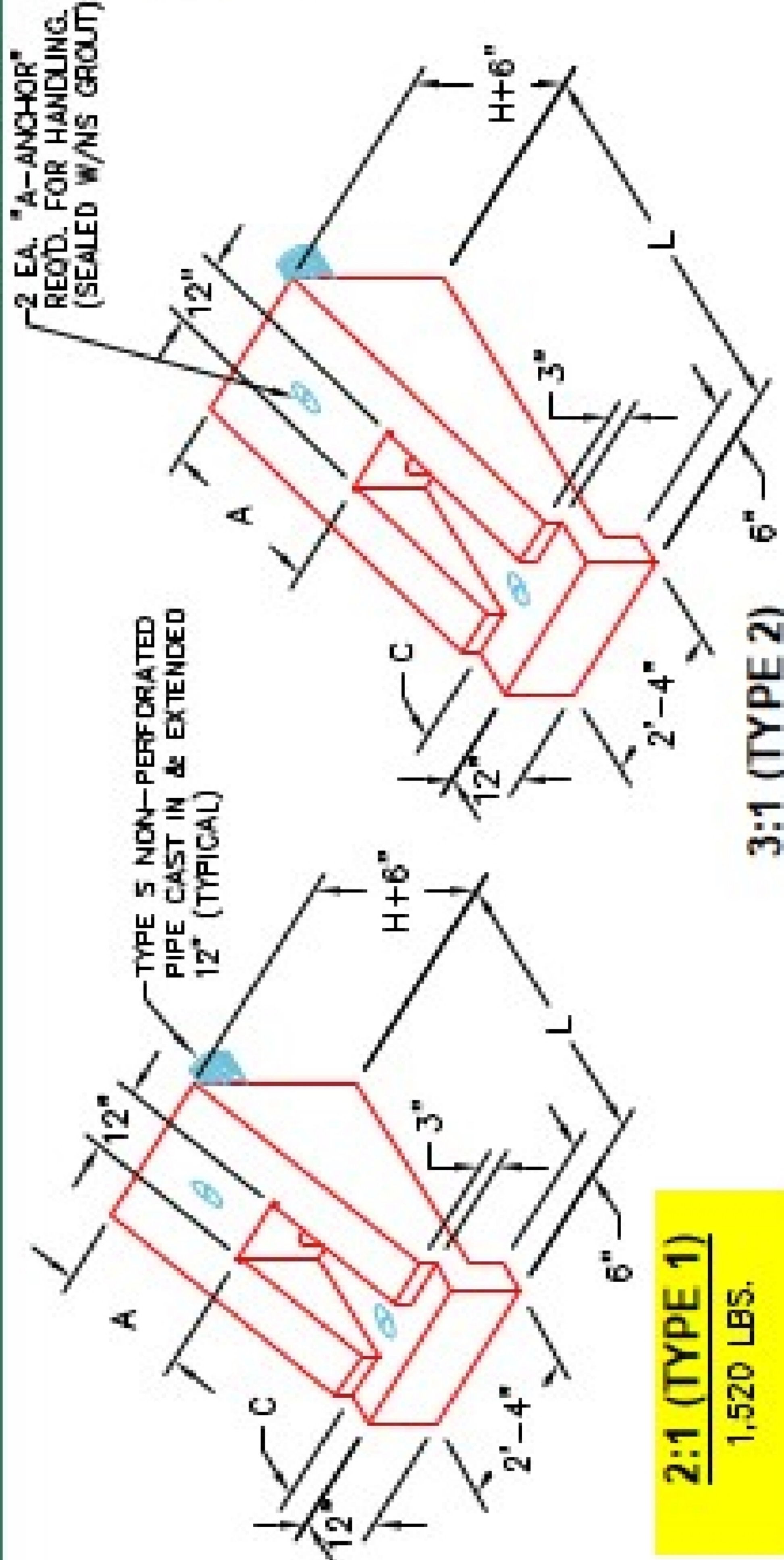
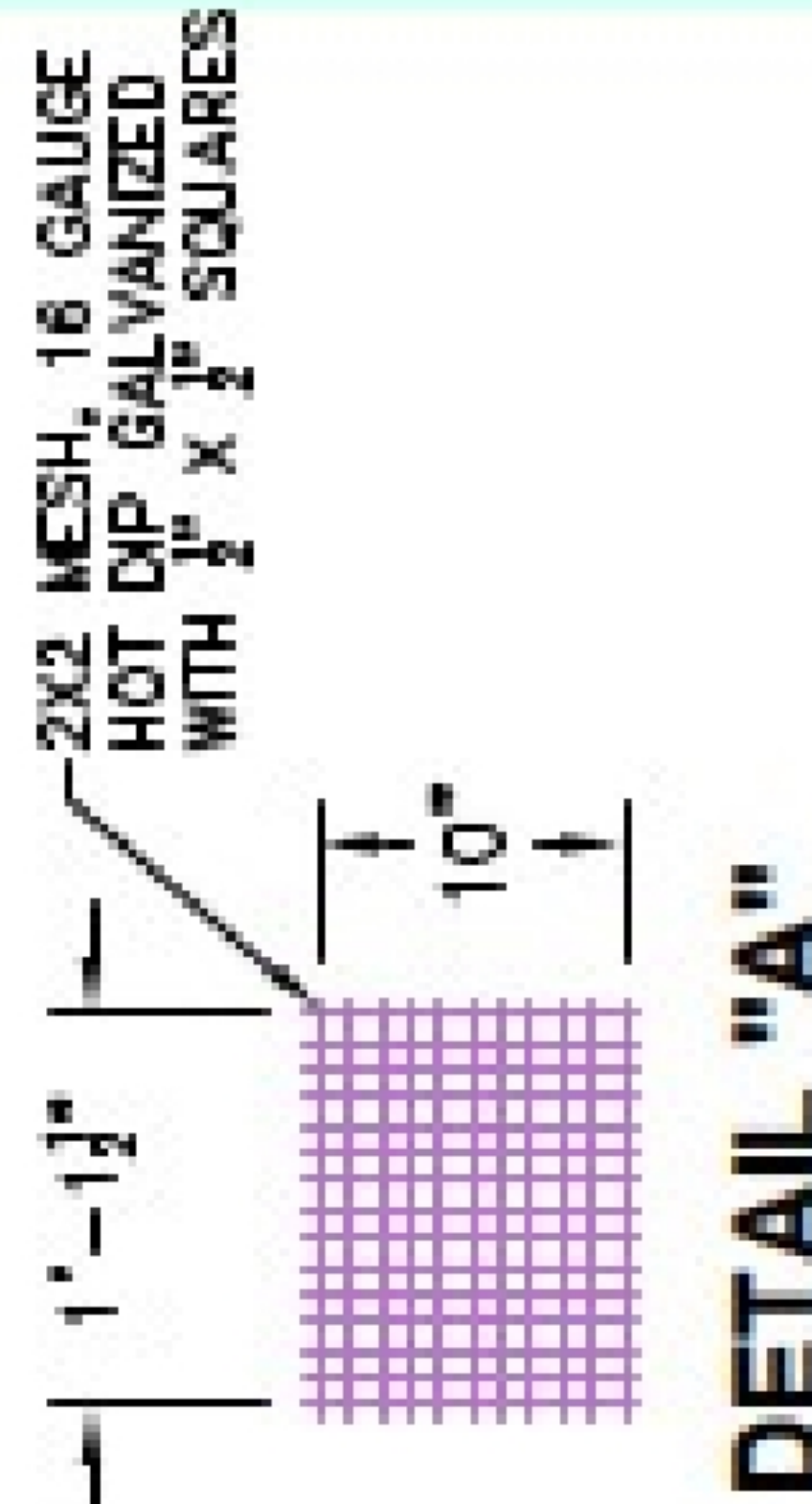


Structure ID: 54429(2)

P1 HWPP214TY1

4" - HW Perforated Pipe Type 1 (2 to1) F/F

PIPE DIA.	SLOPE	DIMENSIONS				CLASS "A" CONCRETE	CU. YDS.
		L	H	A	C		
4"	2 : 1	3'-4 1/2"	1'-6"	6"	6"	0.38	
	AND	5'-1 1/2"	2'-3"	9"	9"	0.56	
6"	4 : 1	6'-9 1/4"	3'-0"	1'-0"	1'-0"	0.74	
	6 : 1	7'-2 1/4"	1'-6"	1'-6"	1'-6"	0.62	
8"	2 : 1	3'-9 1/2"	1'-6"	6"	6"	0.43	
	3 : 1	5'-8 1/4"	2'-3"	9"	9"	0.63	
	4 : 1	7'-7"	3'-0"	1'-0"	1'-0"	0.83	
10"	6 : 1	8'-4 1/2"	1'-6"	1'-6"	1'-6"	0.73	
	2 : 1	4'-2"	1'-6"	6"	6"	0.47	
	3 : 1	6'-3"	2'-1"	9"	9"	0.69	
	4 : 1	8'-4"	3'-0"	1'-0"	1'-0"	0.91	
	6 : 1	9'-5"	1'-6"	1'-6"	1'-6"	0.83	



NOTES:

1. CONCRETE: KYTC APPROVED.
2. REINFORCING: #4 BAR @ 12" C/C E.W. - GRADE 60, (WITH 2" CONCRETE COVER MINIMUM)
3. REINFORCING BARS TO BE TACK WELDED OR TIED.
4. PIPE AND LIFTING ANCHOR POCKETS TO BE GROUTED WITH KYTC APPROVED NON-SHRINK GROUT.
5. DRAWING TO BE USED IN CONJUNCTION WITH KYTC STD. DRAWING RDP-010-09 AND THE STANDARD SPECIFICATIONS FOR ROAD AND BRIDGE CONSTRUCTION.
6. 1/4" CHAMFER ON ALL EXPOSED EDGES.

APPROVED FOR DESIGN ONLY

Approved
 AS PERMITTED MASTER 108 03
 KYTC DIV. OF CONSTRUCTION
 03/08/2016

DIVISION OF CONSTRUCTION



INFRASTRUCTURE PRECAST, INC.
 281 WEST 7TH ST., BEAVER DAM, KY, 40009
 PHONE: (202) 363-0238, FAX: (202) 368-7404

KYTC PERFORATED PIPE HEADWALLS

DRAWING NO.: KYTC PP-HW DATE: 12-07-21
 REVISION BY: J.H. ROSS, P.E. DRAWN BY: H. RICHARDS
 WEB: WWW.IPCASTING.COM SCALE: NTS