

Job Name: 25-4427 Princeton Meter Vault
 Job Location: Princeton, KY
 Contractor: Core & Main LP (BG)

Plant: Beaver Dam

Tech: J. Coppage

12/16/2025 10:00:52 AM

PC: E. Bradley



Structure ID: 60IN X 120IN METER VAULT

P1 CVEBVF

BX BASE w/FLANGE 6inW, 6inF, 12inEF

- P3) 36" x 36" - CASTING HEIGHT - 0"
- P2) 60" x 120" - CB FLAT TOP 6"W SPECIAL (36" x 36" HATCH) - 8"
- P1) 60" x 120" - BX BASE w/FLANGE 6inW, 6inF, 12inEF - 60"
- 1) ASSEMBLY REQUIRED
- 1) SECONDARY POUR - WALLS
- 1) This Structure Includes a Cast-in Item - 36" X 36" HATCH
- 1) Grout Slope To Drain - *
- 1) 60" x 120" - Conseal CS-102 1.00" (Double)
- 1) 36" x 36" - Conseal CS-102 1.00" (Double)
- 1) Hole - 4
- 2) Hole - 8

- 0 lb Structure Notes:
1. PER ASTM C913 SPECIFICATIONS.
 2. CONCRETE = 45,000 PSI AT 28 DAYS.
 3. REINFORCING PER ASTM A615 (GRADE 60).
 - TOP SLAB (As .62) #5 BARS AT 6" C.C.E.W.
 - WALLS (As .12) #5 BARS AT 8" C.C.E.W.
 - FLOOR (As .12) #5 BARS AT 8" C.C.E.W.
 4. HALLIDAY H1W 36" X 36" HATCH PROVIDED BY ICAST
 5. HATCH TO BE CAST INTO THE TOP SLAB.
 6. STEPS AT 12" C/C PROVIDED BY ICAST.
 7. JOINT TO BE SEALED WITH CS-102 1" DOUBLE.
 8. PRE-ASSEMBLY OF INTERNALS BY ICAST.

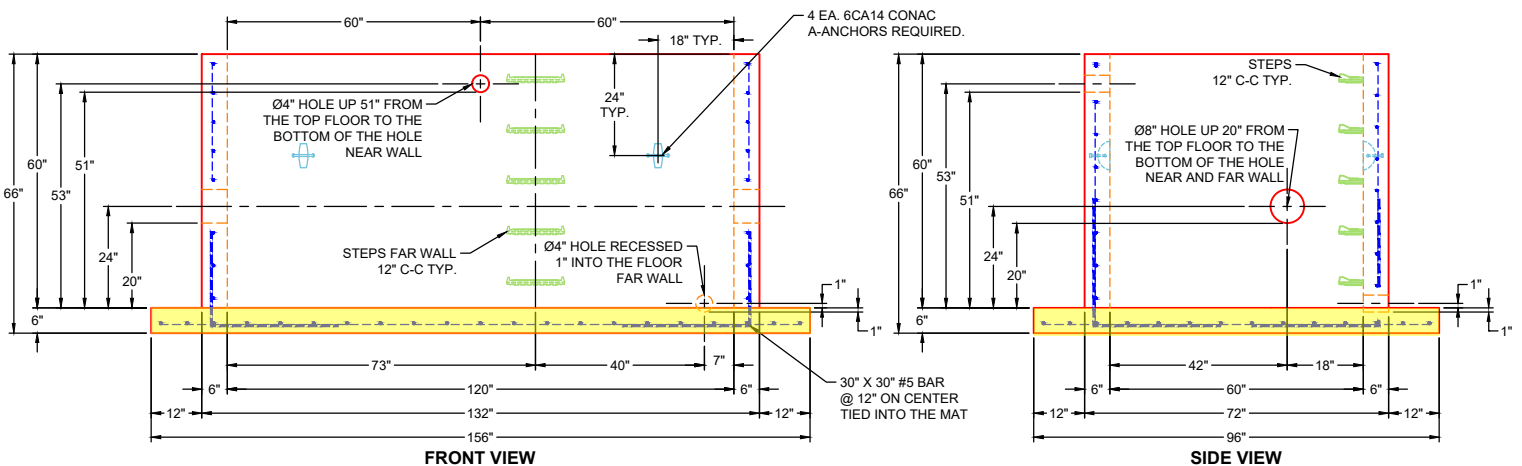
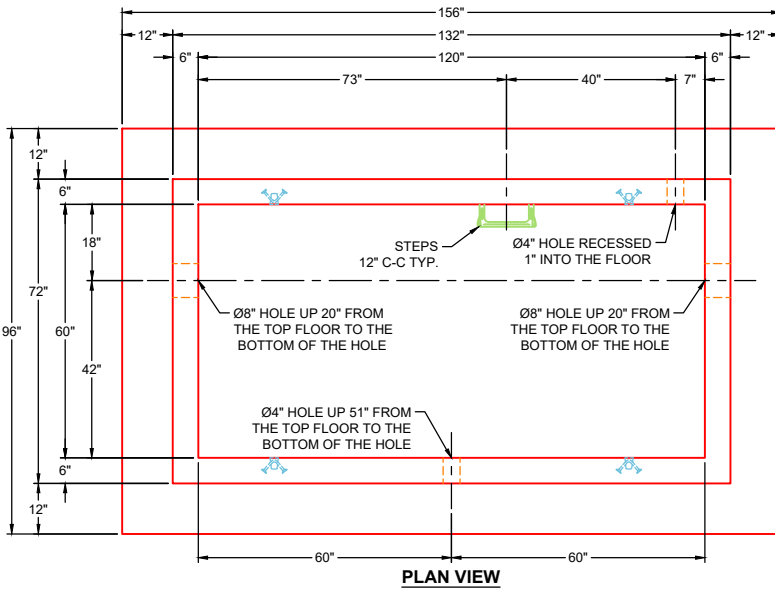
Structure Total: 25483 lb

GENERAL NOTES:

1. MANUFACTURED PER ASTM C-913 (LATEST REVISION)
2. CONCRETE: 5,000 PSI AT 28 DAYS
3. REINFORCEMENT - 2" MIN. REBAR CLEARANCE (TYP) - BASE SECTION: #5 BAR @ 8" C.C. E.W. (GRADE 60)
4. WEIGHTS:

FIRST POUR	7,540 LBS
SECOND POUR	11,543 LBS
THIRD POUR	890 LBS
TOTAL WEIGHT	19,973 LBS
5. STEPS AT 12" C/C SUPPLIED BY ICAST
6. JOINT TO BE SEALED WITH CS-102 1" BUTYL DOUBLE
7. SLOPE TO DRAIN BY ICAST.
8. PRE-ASSEMBLY OF THE INTERNAL COMPONENTS BY ICAST.

FIRST POUR DRAWING - FLOOR



Coating (Int):	Seam Up: Flat	Wall Thickness: 6"	Height (Int): 60"	Weight (Net): 19083 lb
Coating (Ext):	Seam Dn: n/a	Floor Height: 6"	Height (Ext): 66"	Volume (Net): 4.87cu.yd

Job Name: 25-4427 Princeton Meter Vault
 Job Location: Princeton, KY
 Contractor: Core & Main LP (BG)

Plant: Beaver Dam

Tech: J. Coppage

12/16/2025 10:00:52 AM

PC: E. Bradley



Structure ID: 60IN X 120IN METER VAULT

P1 CVEBVF

BX BASE w/FLANGE 6inW, 6inF, 12inEF

- P3) 36" x 36" - CASTING HEIGHT - 0"
- P2) 60" x 120" - CB FLAT TOP 6"W SPECIAL (36" x 36" HATCH) - 8"
- P1) 60" x 120" - BX BASE w/FLANGE 6inW, 6inF, 12inEF - 60"
- 1) ASSEMBLY REQUIRED
- 1) SECONDARY POUR - WALLS
- 1) This Structure Includes a Cast-in Item - 36" X 36" HATCH
- 1) Grout Slope To Drain - *
- 1) 60" x 120" - Conseal CS-102 1.00" (Double)
- 1) 36" x 36" - Conseal CS-102 1.00" (Double)
- 1) Hole - 4
- 2) Hole - 8

- 0 lb Structure Notes:
- 5510 lb 1. PER ASTM C913 SPECIFICATIONS.
 - 11543 lb 2. CONCRETE = 45,000 PSI AT 28 DAYS.
 - 7540 lb 3. REINFORCING PER ASTM A615 (GRADE 60).
 - 0 lb - TOP SLAB (As .62) #5 BARS AT 6" C.C.E.W.
 - 0 lb - WALLS (As .12) #5 BARS AT 8" C.C.E.W.
 - 890 lb - FLOOR (As .12) #5 BARS AT 8" C.C.E.W.
 - 0 lb 4. HALLIDAY H1W 36" X 36" HATCH PROVIDED BY ICAST
 - 0 lb 5. HATCH TO BE CAST INTO THE TOP SLAB.
 - 0 lb 6. STEPS AT 12" C/C PROVIDED BY ICAST.
 - 0 lb 7. JOINT TO BE SEALED WITH CS-102 1" DOUBLE.
 - 0 lb 8. PRE-ASSEMBLY OF INTERNALS BY ICAST.

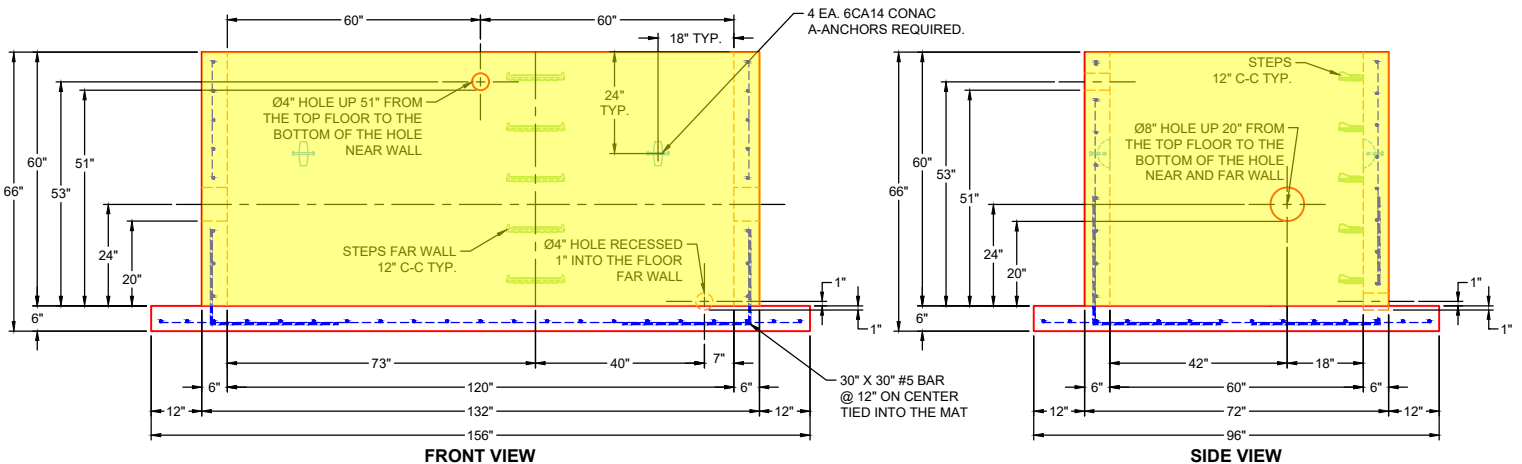
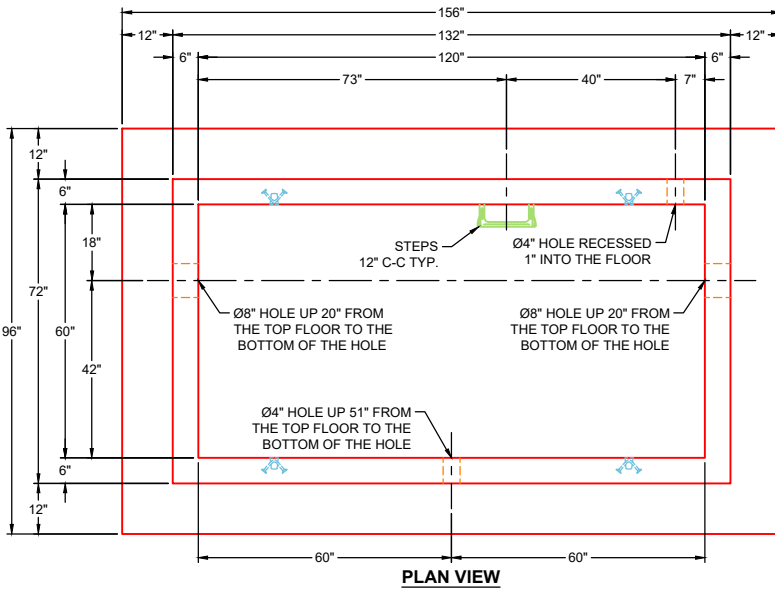
Structure Total: 25483 lb

GENERAL NOTES:

1. MANUFACTURED PER ASTM C-913 (LATEST REVISION)
2. CONCRETE: 5,000 PSI AT 28 DAYS
3. REINFORCEMENT - 2" MIN. REBAR CLEARANCE (TYP) - BASE SECTION: #5 BAR @ 8" C.C. E.W. (GRADE 60)
4. WEIGHTS:

FIRST POUR	7,540 LBS
SECOND POUR	11,543 LBS
THIRD POUR	890 LBS
TOTAL WEIGHT	19,973 LBS
5. STEPS AT 12" C/C SUPPLIED BY ICAST
6. JOINT TO BE SEALED WITH CS-102 1" BUTYL DOUBLE
7. SLOPE TO DRAIN BY ICAST.
8. PRE-ASSEMBLY OF THE INTERNAL COMPONENTS BY ICAST.

SECOND POUR DRAWING - WALLS



Coating (Int): Coating (Ext):	Seam Up: Flat Seam Dn: n/a	Wall Thickness: 6" Floor Height: 6"	Height (Int): 60" Height (Ext): 66"	Weight (Net): 19083 lb Volume (Net): 4.87cu.yd
----------------------------------	-------------------------------	--	--	---

Job Name: 25-4427 Princeton Meter Vault
 Job Location: Princeton, KY
 Contractor: Core & Main LP (BG)

Plant: Beaver Dam

Tech: J. Coppage

12/16/2025 10:00:52 AM

PC: E. Bradley



Structure ID: 60IN X 120IN METER VAULT

P1 CVEBVF

BX BASE w/FLANGE 6inW, 6inF, 12inEF

- P3) 36" x 36" - CASTING HEIGHT - 0"
- P2) 60" x 120" - CB FLAT TOP 6"W SPECIAL (36" x 36" HATCH) - 8"
- P1) 60" x 120" - BX BASE w/FLANGE 6inW, 6inF, 12inEF - 60"
- 1) ASSEMBLY REQUIRED
- 1) SECONDARY POUR - WALLS
- 1) This Structure Includes a Cast-in Item - 36" X 36" HATCH
- 1) Grout Slope To Drain - *
- 1) 60" x 120" - Conseal CS-102 1.00" (Double)
- 1) 36" x 36" - Conseal CS-102 1.00" (Double)
- 1) Hole - 4
- 2) Hole - 8

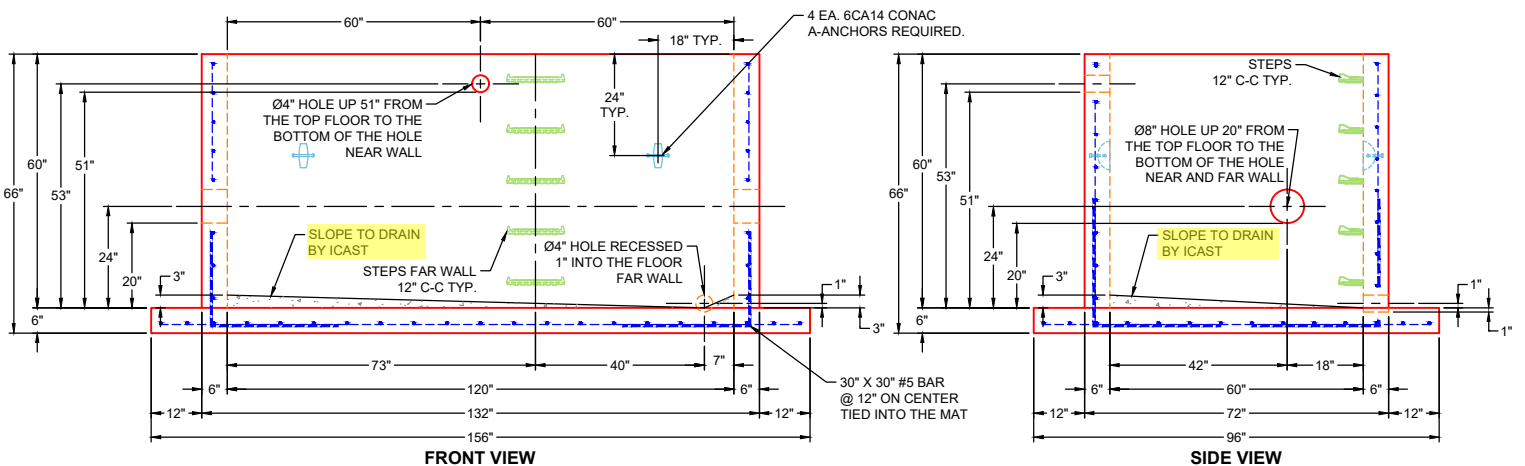
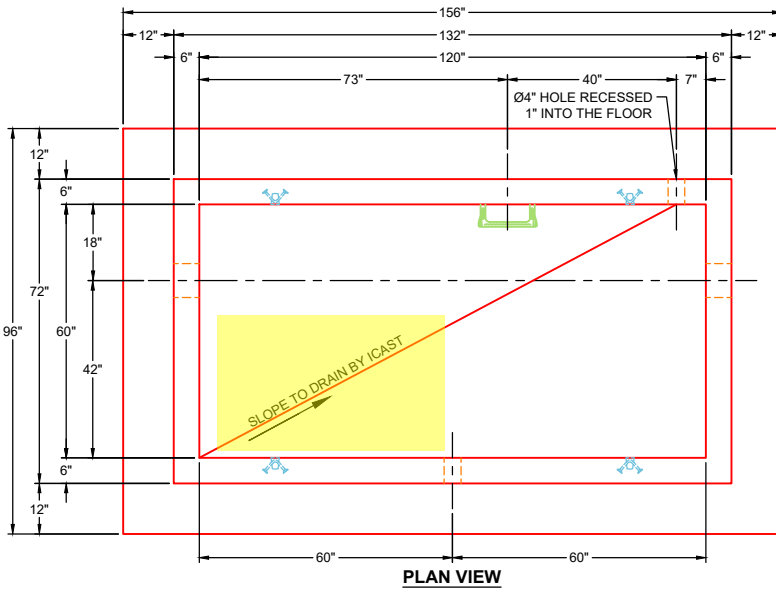
- 0 lb Structure Notes:
- 5510 lb 1. PER ASTM C913 SPECIFICATIONS.
 - 11543 lb 2. CONCRETE = 45,000 PSI AT 28 DAYS.
 - 7540 lb 3. REINFORCING PER ASTM A615 (GRADE 60).
 - 0 lb - TOP SLAB (As .62) #5 BARS AT 6" C.C.E.W.
 - 0 lb - WALLS (As .12) #5 BARS AT 8" C.C.E.W.
 - 890 lb - FLOOR (As .12) #5 BARS AT 8" C.C.E.W.
 - 0 lb 4. HALLIDAY H1W 36" X 36" HATCH PROVIDED BY ICAST
 - 0 lb 5. HATCH TO BE CAST INTO THE TOP SLAB.
 - 0 lb 6. STEPS AT 12" C/C PROVIDED BY ICAST.
 - 0 lb 7. JOINT TO BE SEALED WITH CS-102 1" DOUBLE.
 - 0 lb 8. PRE-ASSEMBLY OF INTERNALS BY ICAST.

Structure Total: 25483 lb

GENERAL NOTES:

1. MANUFACTURED PER ASTM C-913 (LATEST REVISION)
2. CONCRETE: 5,000 PSI AT 28 DAYS
3. REINFORCEMENT - 2" MIN. REBAR CLEARANCE (TYP)
- BASE SECTION: #5 BAR @ 8" C.C. E.W. (GRADE 60)
4. WEIGHTS:
FIRST POUR 7,540 LBS
SECOND POUR 11,543 LBS
THIRD POUR 890 LBS
TOTAL WEIGHT 19,973 LBS
5. STEPS AT 12" C/C SUPPLIED BY ICAST
6. JOINT TO BE SEALED WITH CS-102 1" BUTYL DOUBLE
7. SLOPE TO DRAIN BY ICAST.
8. PRE-ASSEMBLY OF THE INTERNAL COMPONENTS BY ICAST.

THIRD POUR DRAWING - SLOPE TO DRAIN



Coating (Int): Coating (Ext):	Seam Up: Flat Seam Dn: n/a	Wall Thickness: 6" Floor Height: 6"	Height (Int): 60" Height (Ext): 66"	Weight (Net): 19083 lb Volume (Net): 4.87cu.yd
----------------------------------	-------------------------------	--	--	---

Job Name: 25-4427 Princeton Meter Vault
 Job Location: Princeton, KY
 Contractor: Core & Main LP (BG)

Plant: Beaver Dam

Tech: J. Coppage

12/16/2025 10:01:05 AM

PC: E. Bradley



Structure ID: 60IN X 120IN METER VAULT

P2 BX60120-06LD08-S

CB FLAT TOP 6"W SPECIAL (36" x 36" HATCH)

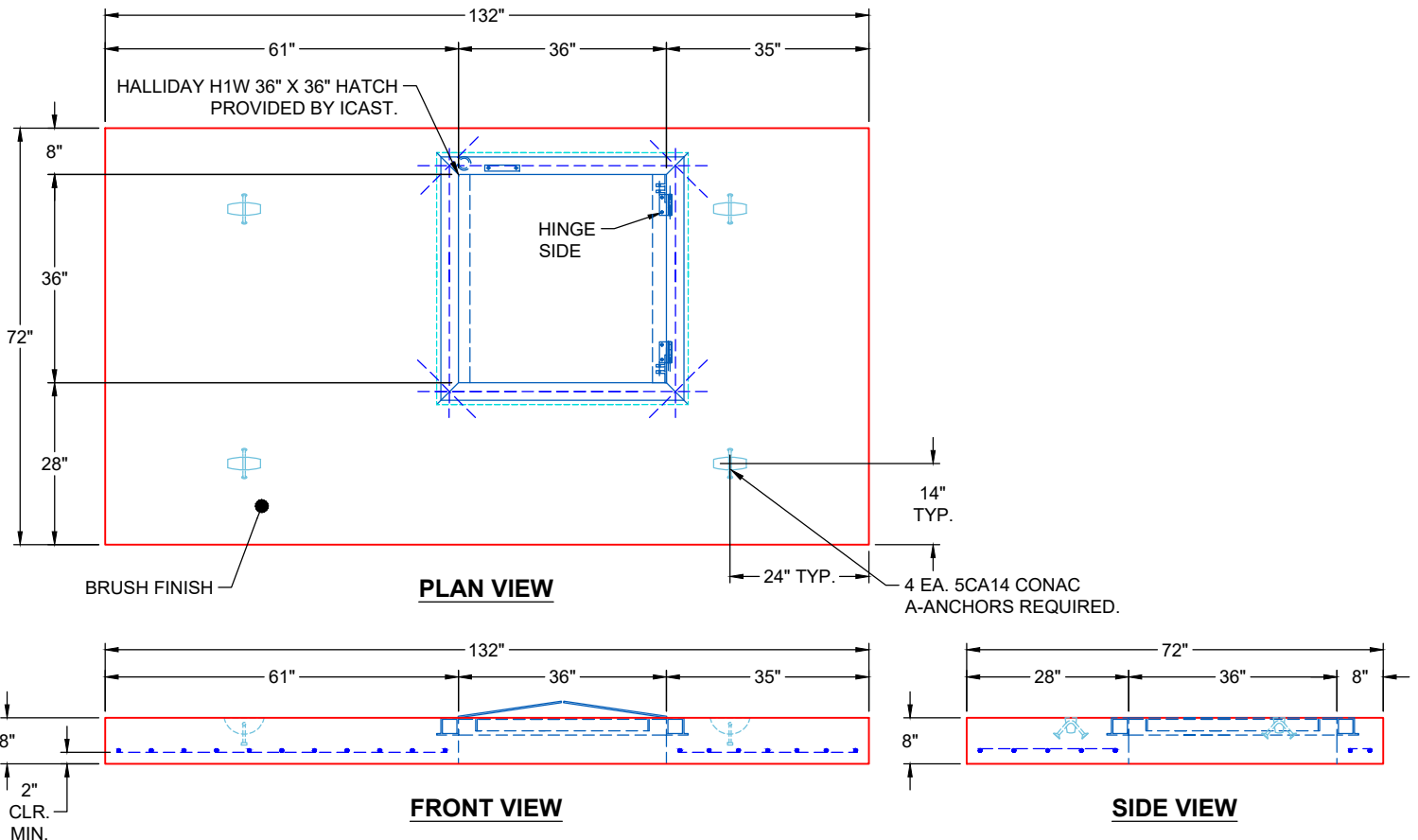
- P3) 36" x 36" - CASTING HEIGHT - 0"
- P2) 60" x 120" - CB FLAT TOP 6"W SPECIAL (36" x 36" HATCH) - 8"
- P1) 60" x 120" - BX BASE w/FLANGE 6inW, 6inF, 12inEF - 60"
- 1) ASSEMBLY REQUIRED
- 1) SECONDARY POUR - WALLS
- 1) This Structure Includes a Cast-in Item - 36" X 36" HATCH
- 1) Grout Slope To Drain - *
- 1) 60" x 120" - Conseal CS-102 1.00" (Double)
- 1) 36" x 36" - Conseal CS-102 1.00" (Double)
- 1) Hole - 4
- 2) Hole - 8

- 0 lb Structure Notes:
1. PER ASTM C913 SPECIFICATIONS.
 2. CONCRETE = 45,000 PSI AT 28 DAYS.
 3. REINFORCING PER ASTM A615 (GRADE 60).
 - TOP SLAB (As .62) #5 BARS AT 6" C.C.E.W.
 - WALLS (As .12) #5 BARS AT 8" C.C.E.W.
 - FLOOR (As .12) #5 BARS AT 8" C.C.E.W.
 4. HALLIDAY H1W 36" X 36" HATCH PROVIDED BY ICAST
 5. HATCH TO BE CAST INTO THE TOP SLAB.
 6. STEPS AT 12" C/C PROVIDED BY ICAST.
 7. JOINT TO BE SEALED WITH CS-102 1" DOUBLE.
 8. PRE-ASSEMBLY OF INTERNALS BY ICAST.

Structure Total: 25483 lb

GENERAL NOTES:

1. MANUFACTURED PER ASTM C-913 (LATEST REVISION)
2. CONCRETE: 5,000 PSI AT 28 DAYS
3. REINFORCEMENT - 2" MIN. REBAR CLEARANCE (TYP)
 - TOP SLAB: #5 BAR @ 6" C.C. E.W. (GRADE 60)
4. WEIGHT: 5,510 LBS
5. HALLIDAY H1W 36" X 36" HATCH SUPPLIED BY ICAST TO BE CAST INTO THE TOP SLAB
6. JOINT TO BE SEALED WITH CS-102 1" BUTYL DOUBLE



Coating (Int): Coating (Ext):	Seam Up: Flat Seam Dn: Flat	Wall Thickness: 6"	Height (Ext): 8"	Weight (Net): 5510 lb Volume (Net): 1.41cu.yd
----------------------------------	--------------------------------	--------------------	------------------	--

25-4427 PRINCETON METER VAULT ASSEMBLY INFORMATION 60IN X 120IN METER VAULT

