

**Job Name: 25-4423 - City of Madisonville Manhole**  
**Job Location: CPU**  
**Contractor: City Of Madisonville**

PC: T. Lewis  
 TECH: K. Cardwell  
 Plant: Beaver Dam, KY



Structure ID: **2-54423**

Spec: Sanitary  
 Type: SAN.MH w/ConBlock-CDA Red  
 Size: 48"

Rim: 6.291'  
 Invert: 0'  
 Rim to Invert: 6.291'

Sump: 1.5"  
 Floor (Top): -0.125'  
 Floor Height: 6"

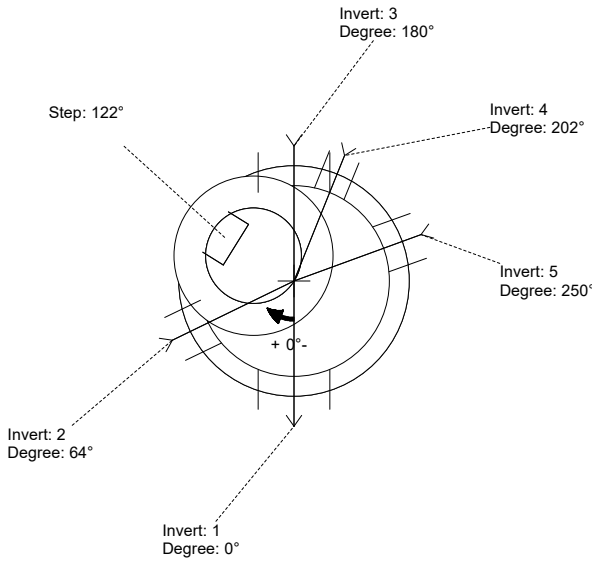
Floor (Bot): -0.625'  
 Overall Height: 6.833'  
 Slack: 0.992'

**Structure Notes:**

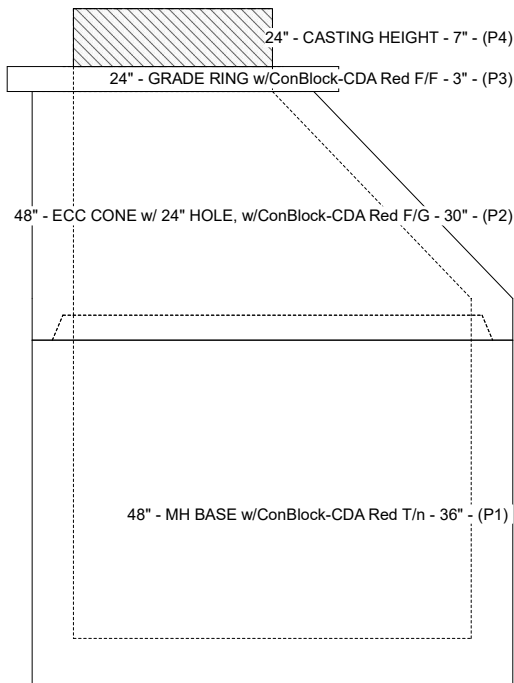
1. PER ASTM C-478 SPECS
2. CONCRETE: 4,500 PSI AT 28 DAYS
3. REINFORCEMENT: PER ASTM A615
4. CONBLOCK CDA RED ADMIXTURE REQUIRED
5. INVERT CHANNEL REQUIRED
6. STEPS AT 122 DEGREES
7. HOE MC-375 FRAME & COVER "SANITARY" SUPPLIED BY ICAST
8. DROP AT INVERT 4 TO BE SUPPLIED BY OTHERS

**STRUCTURE SUMMARY:**

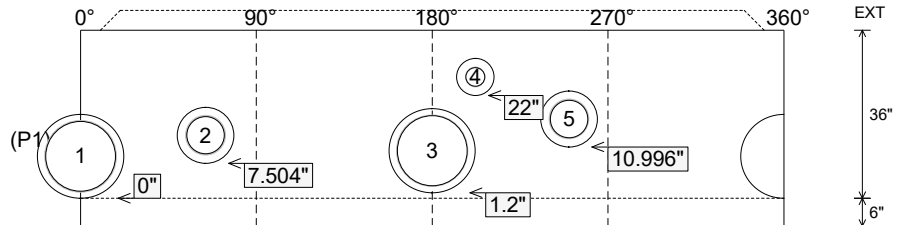
P4) 24" - CASTING HEIGHT - 7"	0 lb
P3) 24" - GRADE RING w/ConBlock-CDA Red F/F - 3"	202 lb
P2) 48" - ECC CONE w/ 24" HOLE, w/ConBlock-CDA Red F/G - 30"	1961 lb
P1) 48" - MH BASE w/ConBlock-CDA Red T/n - 36"	3510 lb
1) JOINT WRAP PRIMER - CONSEAL CS-75 (1 gal.)	0 lb
1) JOINT WRAP - 0.065"x6"x50' CONSEAL CS212	0 lb
1) ADMIXTURE CONBLOCK CDA RED	0 lb
1) 48" - MH INVERT CHANNEL w/ConBlock-CDA Red - FULL HEIGHT	1440 lb
1) CASTING - HOE MC-375 F/C Sanitary	271 lb
1) 48" - Conseal CS-102 1.00" (Double)	0 lb
2) PSX - 18M DD	16 lb
2) PSX - 12-08 NYLO	16 lb
1) PSX - 8QRS-S NYLO	6 lb
6) MH Step ML-10-TDS-NCR - 10"	0 lb
<b>Structure Total:</b>	<b>7424 lb</b>



Position	Elev	Angle	Pipe	Pipe OD	Hole	Connector	Up (L)	Ref
Rim	6.291'							
Reducer								
Invert 1	0'	0°	15" PVC SDR35	15.3"	18"	PSX 18M DD	0"	P1
Invert 2	0.667'	64°	8" PVC SDR35	8.5"	12"	PSX 12-08 NYLO	7.504"	P1
Invert 3	0.1'	180°	15" PVC SDR35	15.3"	18"	PSX 18M DD	1.2"	P1
Invert 4	1.875'	202°	4" PVC SDR35	4.25"	8"	PSX 8QRS-S NYLO	22"	P1
Invert 5	0.958'	250°	8" PVC SDR35	8.5"	12"	PSX 12-08 NYLO	10.996"	P1
Invert 6								
Invert 7								
Invert 8								



**Cast (Int. Dim.) - Interior Dimensions**



Submittal Drawing  
 12/11/2025 10:26:57 AM

SUBMITTAL  
 APPROVED BY: