

Job Name: 25-4419 - East Bank Reginal Pump Station  
 Job Location: Nashville, TN 37213  
 Contractor: Garney Companies, Inc.

Plant: 100  
 1/28/2026 2:53:02 PM

Tech: J. Horsley - F  
 PC: J. Jarvis



**Structure ID: ST106**

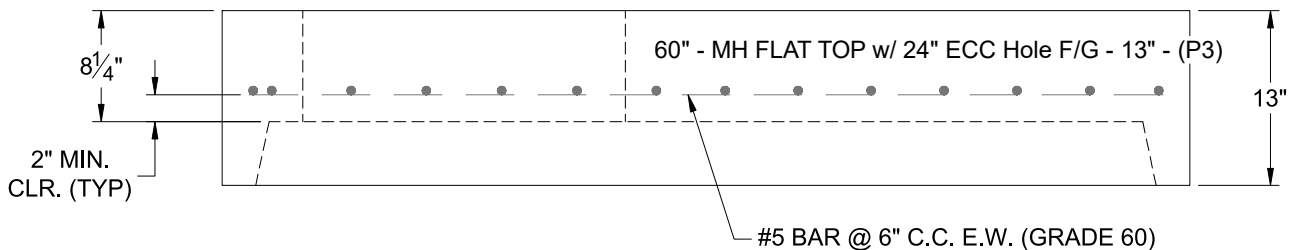
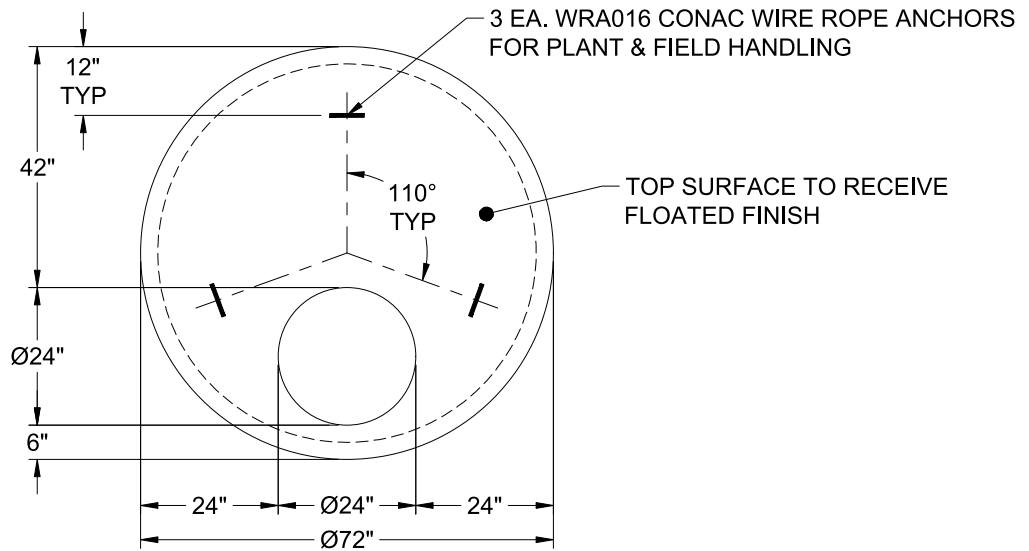
**P3 MH060LD13**

**MH FLAT TOP w/ 24" ECC Hole F/G**

- P4) 24" - CASTING HEIGHT - 7"
- P3) 60" - MH FLAT TOP w/ 24" ECC Hole F/G - 13"
- P2) 60" - MH RISER Custom Ht T/G - 38"
- P1) 60" - MH BASE T/n - 60"
- 1) CASTING - JBS 1150 F/C STORM
- 2) 60" - Conseal CS-102 1.00"
- 1) Hole - 40
- 2) Hole - 34
- 1) Hole - 22
- 5) MH Step ML-10-TDS-NCR - 10"

0 lb  
 2869 lb  
 3967 lb  
 7158 lb  
 250 lb  
 0 lb  
 0 lb  
 0 lb  
 0 lb  
 0 lb  
 0 lb  
 Structure Total: 14244 lb

- Structure Notes:
1. PER ASTM C-478 SPECIFICATIONS
  2. CONCRETE: 4,000 PSI AT 28 DAYS
  3. REINFORCEMENT: #5 BAR @ 6" C.C. E.W. (GRADE 60) - 2" MIN. REBAR CLEARANCE (TYP)
  4. JBS 1150 FRAME & COVER "STORM" SUPPLIED BY ICAST
  5. LIFTERS: 3 EA. WRA016 CONAC WIRE ROPE ANCHORS FOR PLANT & FIELD HANDLING
  6. TOP SURFACE TO RECEIVE FLOATED FINISH



Coating (Int): Coating (Ext):	Seam Up: Flat Seam Dn: Groove	Wall Thickness: 6"	Height (Ext): 13"	Weight (Net): 2869 lb Volume (Net): 0.73cu.yd
----------------------------------	----------------------------------	--------------------	-------------------	--