

Job Name: 25-4419 - East Bank Reginal Pump Station  
 Job Location: Nashville, TN 37213  
 Contractor: Garney Companies, Inc.

Plant: 100

1/28/2026 2:53:02 PM

Tech: J. Horsley - F

PC: J. Jarvis



**Structure ID: ST105**

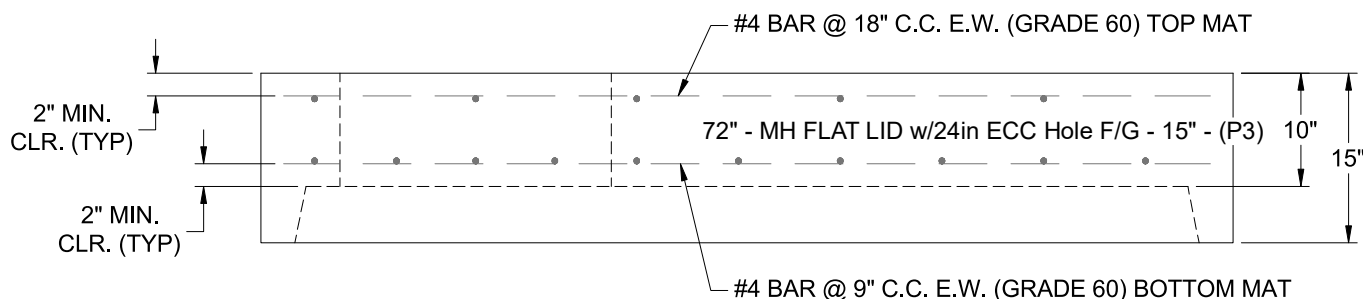
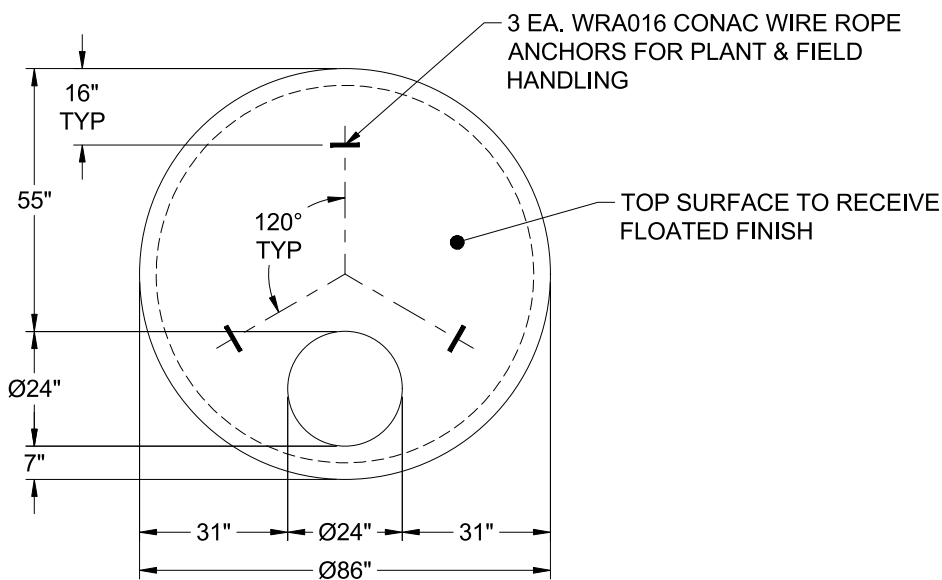
**P3 MH072LD15-24ECC**

**MH FLAT LID w/24in ECC Hole F/G**

- P4) 24" - CASTING HEIGHT - 7"
- P3) 72" - MH FLAT LID w/24in ECC Hole F/G - 15"
- P2) 72" - MH RISER Custom Ht T/G - 37"
- P1) 72" - MH BASE T/n - 84"
- 1) CASTING - JBS 1150 F/C STORM
- 2) 72" - Conseal CS-102 1.00"
- 1) Hole - 58 x 42
- 1) Hole - 22
- 1) Hole - 40
- 7) MH Step ML-10-TDS-NCR - 10"

0 lb  
 5098 lb  
 5394 lb  
 13873 lb  
 250 lb  
 0 lb  
 0 lb  
 0 lb  
 0 lb  
 0 lb  
 0 lb  
 Structure Total: 24615 lb

- Structure Notes:**
1. PER ASTM C-478 SPECIFICATIONS
  2. CONCRETE: 4,000 PSI AT 28 DAYS
  3. REINFORCEMENT - 2" MIN. REBAR CLEARANCE (TYP):  
 - TOP MAT: #4 BAR @ 18" C.C. E.W. (GRADE 60)  
 - BOTTOM MAT: #4 BAR @ 9" C.C. E.W. (GRADE 60)
  4. JBS 1150 FRAME & COVER "STORM" SUPPLIED BY ICAST
  5. LIFTERS: 3 EA. WRA016 CONAC WIRE ROPE ANCHORS FOR PLANT & FIELD HANDLING
  6. TOP SURFACE TO RECEIVE FLOATED FINISH



Coating (Int):  
 Coating (Ext):

Seam Up: Flat  
 Seam Dn: Groove

Wall Thickness: 7"

Height (Ext): 15"

Weight (Net): 5098 lb  
 Volume (Net): 1.3cu.yd