

Job Name: 25-4405 Three Springs Rd Relocation
Job Location: Bowling Green, KY
Contractor: Cumberland Pipeline LLC

PC: Celina Goff
 TECH: J. Coppage
 Plant: Beaver Dam



Structure ID: 3

Spec: Sanitary
 Type: SAN.MH w/Ext. Drop
 Size: 48"

Rim: 569.49'
 Invert: 561.51'
 Rim to Invert: 7.98'

Sump: 2"
 Floor (Top): 561.343'
 Floor Height: 6"

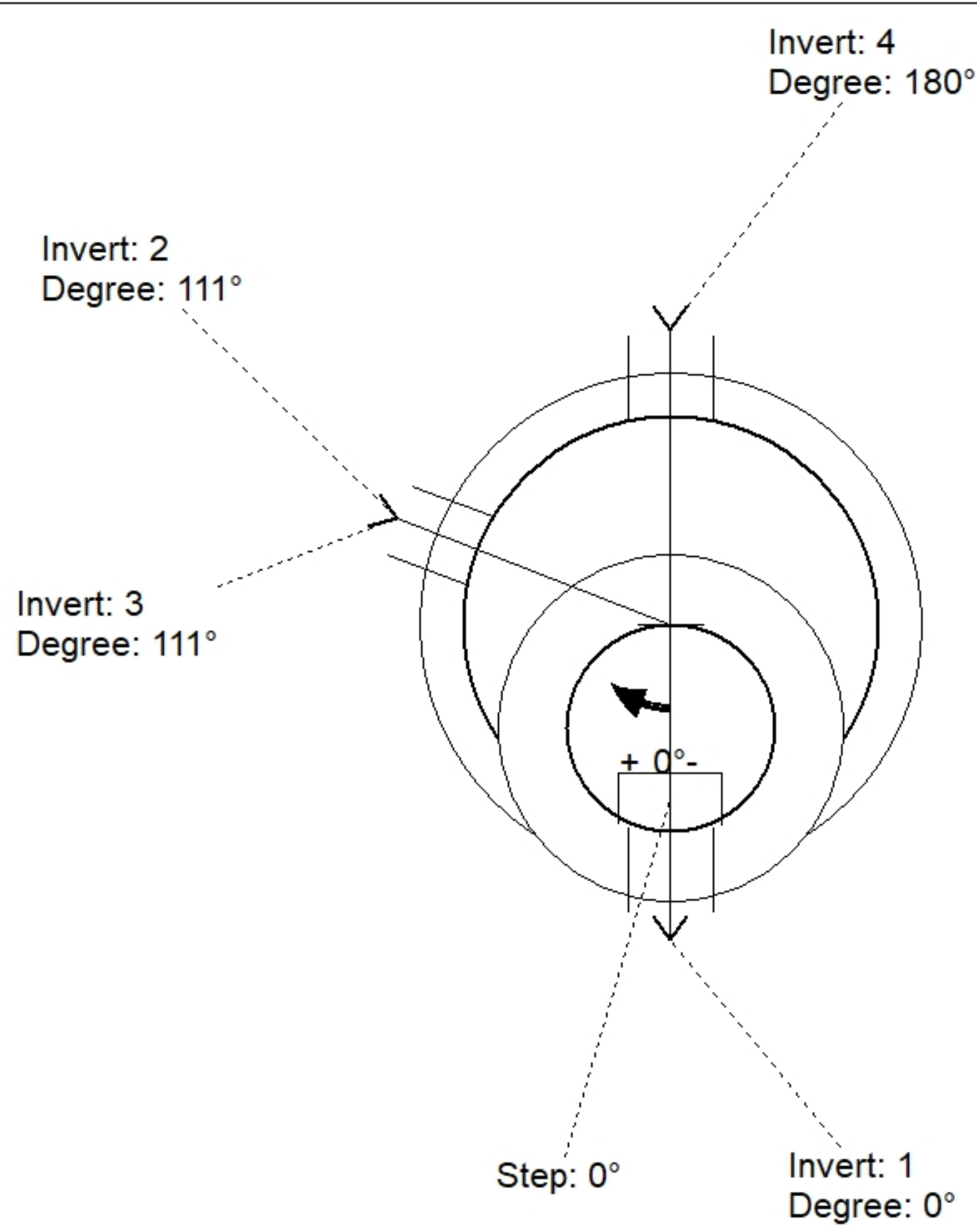
Floor (Bot): 560.843'
 Overall Height: 8.417'
 Slack: 2.76"

Structure Notes:

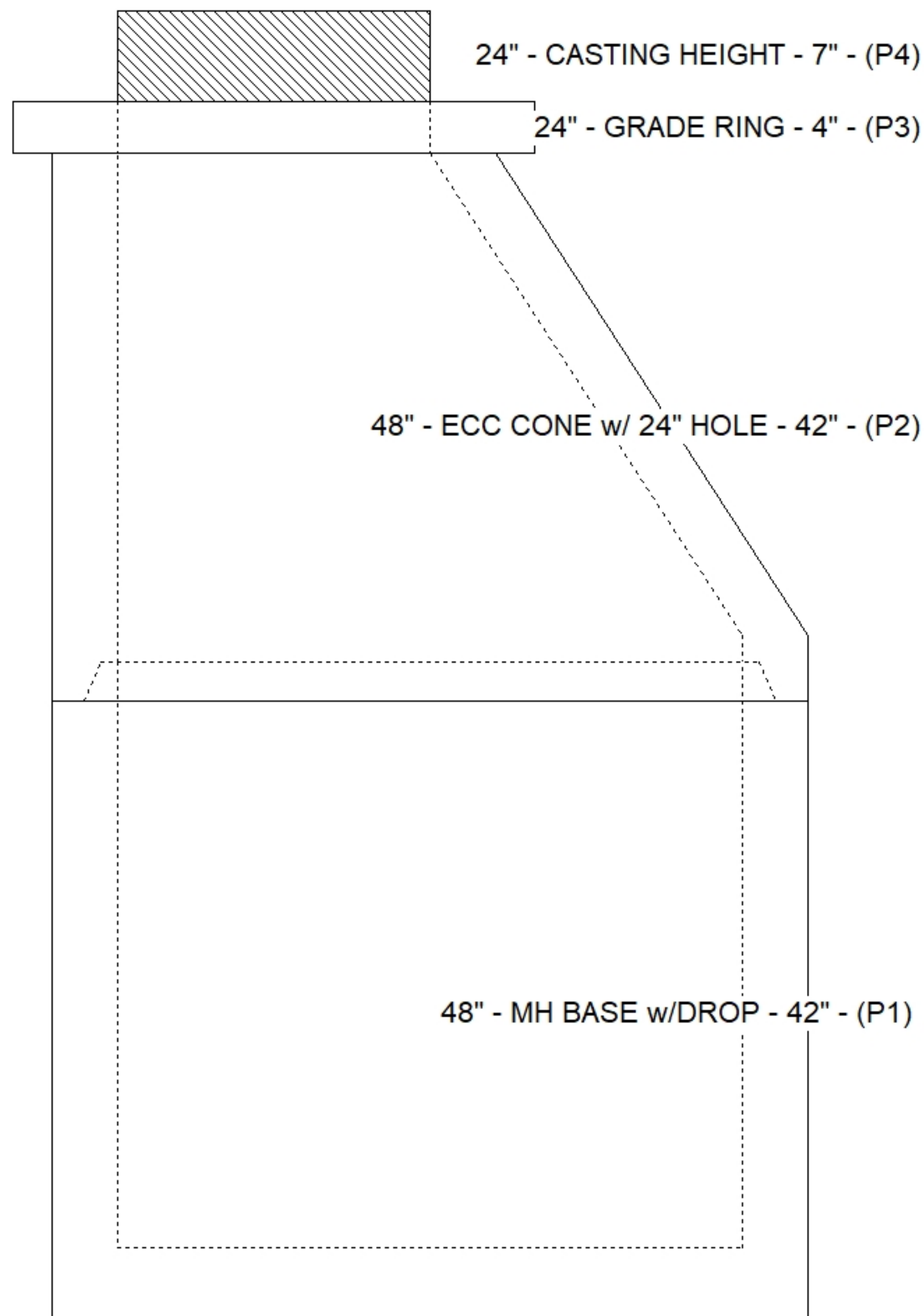
1. JR HOE MC-375 SANITARY PROVIDED BY ICAST.
2. PER ASTM C478 SPECIFICATIONS.
3. CONCRETE = 4,000 PSI AT 28 DAYS.
4. REINFORCING PER ASTM A615 (GRADE 60).
 - CONE (As .12)
 - RISER/WALLS (As .12)
 - FLOOR (As .31) #5 BARS AT 12" C.C.E.W.

STRUCTURE SUMMARY:

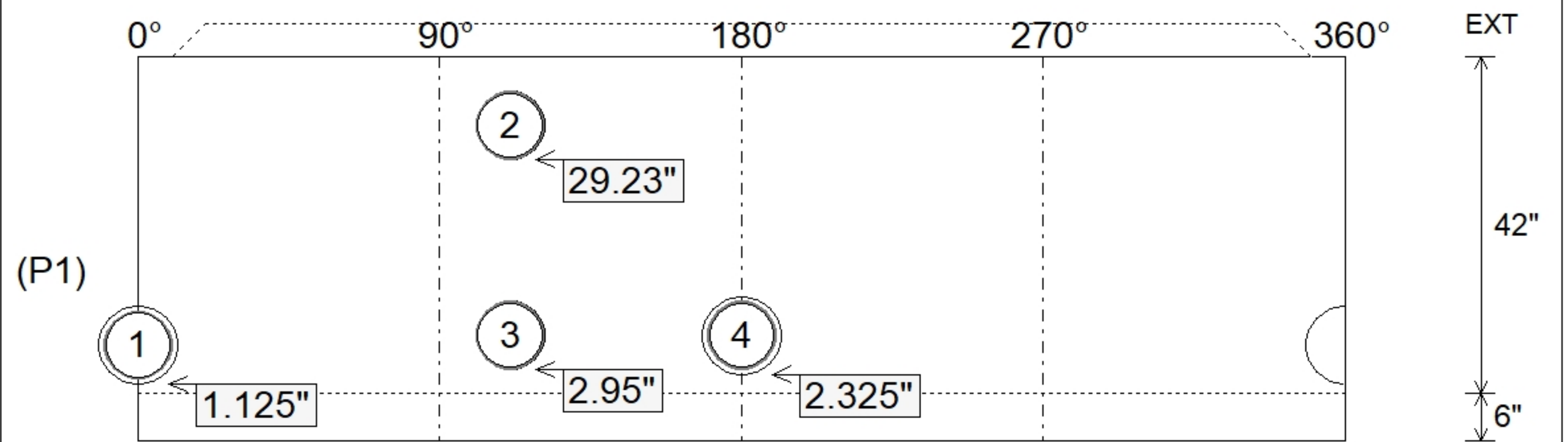
P4) 24" - CASTING HEIGHT - 7"	0 lb
P3) 24" - GRADE RING - 4"	270 lb
P2) 48" - ECC CONE w/ 24" HOLE - 42"	3200 lb
P1) 48" - MH BASE w/DROP - 42"	4153 lb
1) JOINT WRAP - 12" WD x 048" MAC WRAP	0 lb
1) 48" - MH INVERT CHANNEL - FULL HEIGHT	1440 lb
1) 48" - Conseal CS-102 1.00" (Double)	0 lb
2) A-Lok - 0285	2 lb
1) Drop Tee - 8" PVC	0 lb
1) Drop Elbow - 8" PVC	0 lb
7) MH Step ML-10-TDS-NCR - 10"	0 lb
Structure Total:	9065 lb



Position	Elev	Angle	Pipe	Pipe OD	Hole	Connector	Up (")	Ref
Rim	569.49'							
Reducer								
Invert 1	561.51'	0°	8" PVC SDR35	8.5"	9.75"	A-Lok 0285	1.125"	P1
Invert 2	563.8'	111°	8" PVC SDR35	8.5"	8.5"	Drop Tee 8" PVC	29.23"	P1
Invert 3	561.61'	111°	8" PVC SDR35	8.5"	8.5"	Drop Elbow 8" PVC	2.95"	P1
Invert 4	561.61'	180°	8" PVC SDR35	8.5"	9.75"	A-Lok 0285	2.325"	P1
Invert 5								
Invert 6								
Invert 7								
Invert 8								



Default - Interior Dimensions



Submittal Drawing
 2/3/2026 8:25:46 AM

SUBMITTAL
 APPROVED BY: