

Job Name: 25-4404 - Old Heritage Subdivision Section 7
 Job Location: Shelbyville, KY 40065
 Contractor: Filcon Construction

Plant: 100

Tech: J. Horsley - F

12/17/2025 2:02:04 PM

PC: C. Goff



Structure ID: 38

P2 MH048RS48S-D

MH RISER w/DROP T/G

- P5) 24" - CASTING HEIGHT - 7"
- P4) 48" - ECC CONE w/ 24" HOLE F/G - 30"
- P3) 48" - MH RISER w/DROP T/G - 48"
- P2) 48" - MH RISER w/DROP T/G - 48"
- P1) 48" - MH BASE w/DROP T/n - 24"
- 1) JOINT WRAP - 0.065"x6"x50' CONSEAL CS212
- 1) JOINT WRAP PRIMER - CONSEAL CS-75 (1 gal.)
- 1) 48" - MH INVERT CHANNEL - FULL HEIGHT
- 3) 48" - Conseal CS-102 1.00" (Double)
- 2) PSX - 12-08 NYLO
- 1) Drop Tee - 8" PVC
- 1) Drop Elbow - 8" PVC
- 13) MH Step ML-10-TDS-NCR - 10"

- 0 lb
- 2050 lb
- 5393 lb
- 5417 lb
- 4177 lb
- 0 lb
- 0 lb
- 1440 lb
- 0 lb
- 16 lb
- 0 lb
- 0 lb
- 0 lb

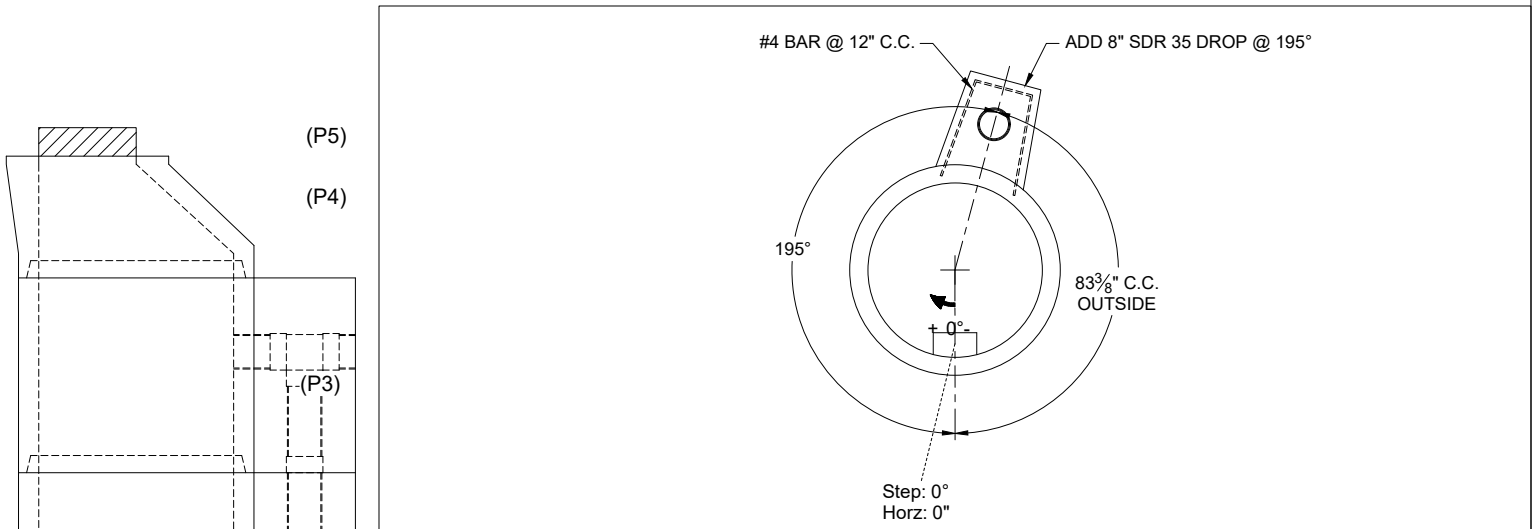
- Structure Notes:**
1. PER ASTM C-478 SPECIFICATIONS
 2. CONCRETE: 4,000 PSI AT 28 DAYS
 3. REINFORCEMENT: PER ASTM A615
 4. INVERT CHANNEL REQUIRED
 5. STEPS AT 0 DEGREES
 6. CASTING SUPPLIED BY OTHERS
 7. EXTERNAL DROP AT INVERTS 3 & 4 SUPPLIED BY ICAST
 8. ADD 8" SDR 35 DROP AT 195°

Structure Total: 18493 lb

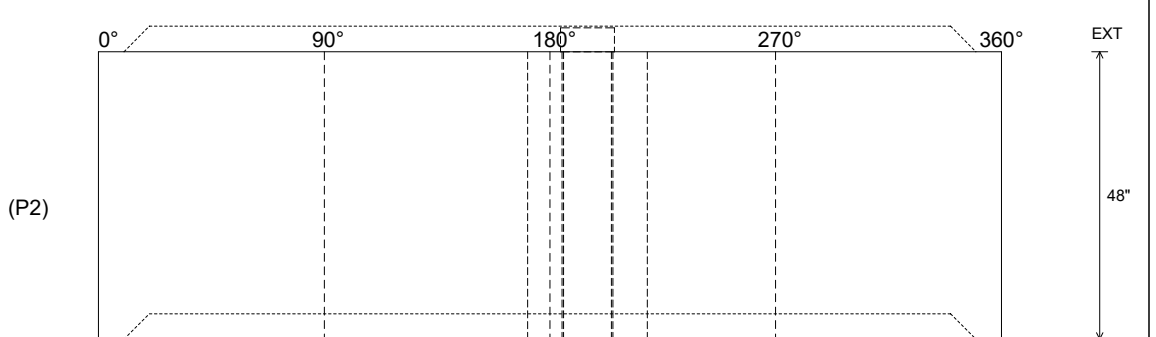
Rim: 787.02' Rim to Invert: 12.92' Slack: 1.04" Sump: 3" Step Position: 0°

Position	Elev	Angle	Ext. (cw)	Pipe	Pipe OD	Connector	Hole	Horz Size	Up ()	Offset
Invert 1										
Invert 2										
Invert 3										
Invert 4										
Invert 5										
Invert 6										
Invert 7										
Invert 8										

RIGHT-SIDE UP VIEW (int. dimensions)



INSIDE WALL DIMENSIONS



Coating (Int):
Coating (Ext):

Seam Up: Tongue
Seam Dn: Groove

Wall Thickness: 5"
Floor Height: 0"

Height (Int): 48"
Height (Ext): 48"

Weight (Net): 3353 lb
Volume (Net): 0.86cu.yd