

**Job Name: 25-4404 - Old Heritage Subdivision Section 7**  
**Job Location: Shelbyville, KY 40065**  
**Contractor: Filcon Construction**

PC: C. Goff  
 TECH: J. Horsley - F  
 Plant: 100



Structure ID: **36**  
 Spec: Sanitary  
 Type: SAN.MH  
 Size: 48"

Rim: 784.9'  
 Invert: 775.03'  
 Rim to Invert: 9.87'

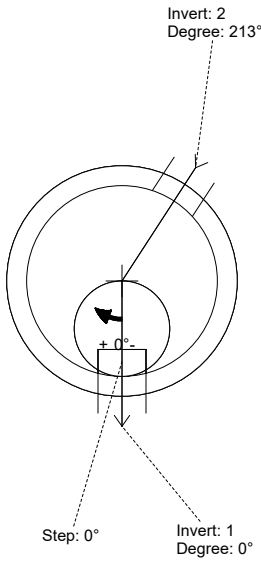
Sump: 3"  
 Floor (Top): 774.78'  
 Floor Height: 6"

Floor (Bot): 774.28'  
 Overall Height: 10.583'  
 Slack: 0.44"

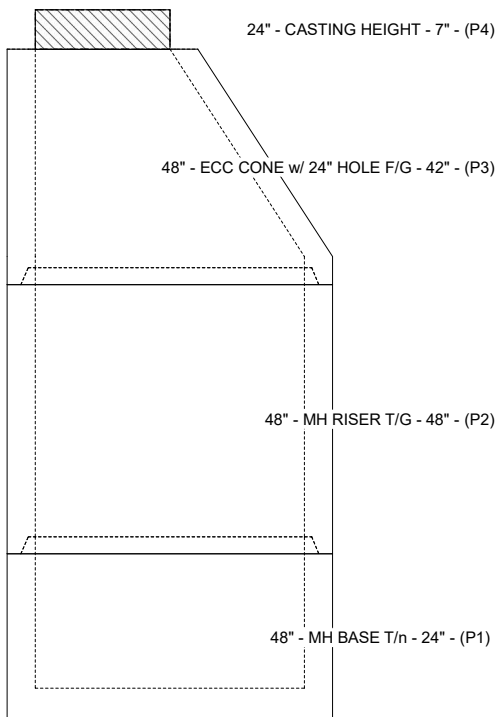
- Structure Notes:**
1. PER ASTM C-478 SPECIFICATIONS
  2. CONCRETE: 4,000 PSI AT 28 DAYS
  3. REINFORCEMENT: PER ASTM A615
  4. INVERT CHANNEL REQUIRED
  5. STEPS AT 0 DEGREES
  6. CASTING SUPPLIED BY OTHERS

**STRUCTURE SUMMARY:**

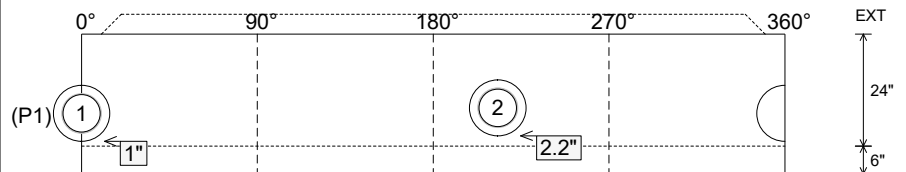
- P4) 24" - CASTING HEIGHT - 7" 0 lb
  - P3) 48" - ECC CONE w/ 24" HOLE F/G - 42" 3200 lb
  - P2) 48" - MH RISER T/G - 48" 3353 lb
  - P1) 48" - MH BASE T/n - 24" 2911 lb
  - 1) JOINT WRAP - 0.065"x6"x50' CONSEAL CS212 0 lb
  - 1) JOINT WRAP PRIMER - CONSEAL CS-75 (1 gal.) 0 lb
  - 1) 48" - MH INVERT CHANNEL - FULL HEIGHT 1440 lb
  - 2) 48" - Conseal CS-102 1.00" (Double) 0 lb
  - 2) PSX - 12-08 NYLO 16 lb
  - 9) MH Step ML-10-TDS-NCR - 10" 0 lb
- Structure Total: 10920 lb**



Position	Elev	Angle	Pipe	Pipe OD	Hole	Connector	Up (L)	Ref
Rim	784.9'							
Reducer								
Invert 1	775.03'	0°	8" PVC SDR35	8.5"	12"	PSX 12-08 NYLO	1"	P1
Invert 2	775.13'	213°	8" PVC SDR35	8.5"	12"	PSX 12-08 NYLO	2.2"	P1
Invert 3								
Invert 4								
Invert 5								
Invert 6								
Invert 7								
Invert 8								



**Cast (Int. Dim.) - Interior Dimensions**



Submittal Drawing  
 12/17/2025 12:47:34 PM

SUBMITTAL  
 APPROVED BY: