

**Job Name: 25-4403 - Old Heritage Subdivision Section 6**  
**Job Location: Shelbyville, KY 40065**  
**Contractor: Filcon Construction**

PC: C. Goff  
 TECH: J. Horsey - F  
 Plant: 100



Structure ID: 46  
 Spec: Sanitary  
 Type: SAN.MH  
 Size: 48"

Rim: 779.64'  
 Invert: 770.87'  
 Rim to Invert: 8.77'

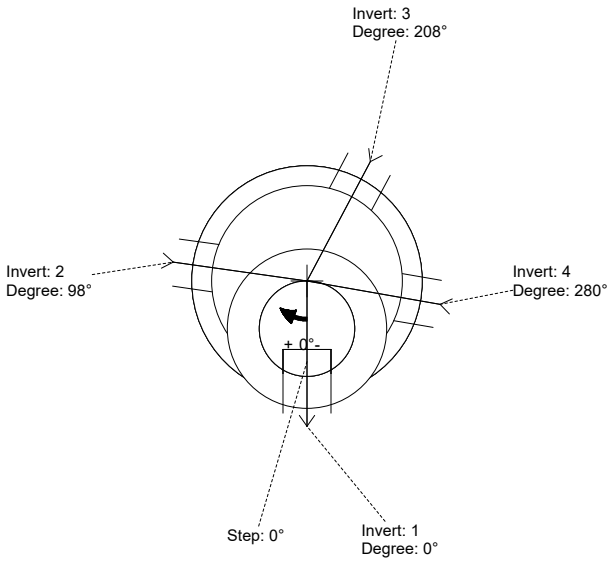
Sump: 3"  
 Floor (Top): 770.62'  
 Floor Height: 6"

Floor (Bot): 770.12'  
 Overall Height: 9.417'  
 Slack: 1.24"

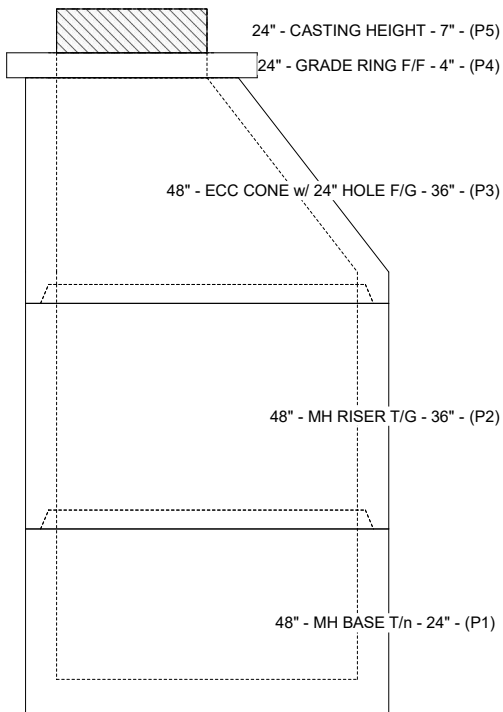
- Structure Notes:**
1. PER ASTM C-478 SPECIFICATIONS
  2. CONCRETE: 4,000 PSI AT 28 DAYS
  3. REINFORCEMENT: PER ASTM A615
  4. INVERT CHANNEL REQUIRED
  5. STEPS AT 0 DEGREES
  6. CASTING SUPPLIED BY OTHERS

**STRUCTURE SUMMARY:**

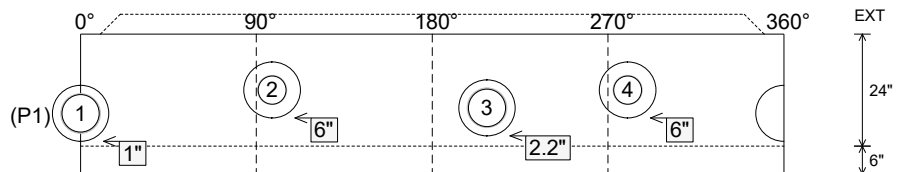
- P5) 24" - CASTING HEIGHT - 7" 0 lb
  - P4) 24" - GRADE RING F/F - 4" 270 lb
  - P3) 48" - ECC CONE w/ 24" HOLE F/G - 36" 3000 lb
  - P2) 48" - MH RISER T/G - 36" 2515 lb
  - P1) 48" - MH BASE T/n - 24" 2815 lb
  - 1) JOINT WRAP - 0.065"x6"x50' CONSEAL CS212 0 lb
  - 1) JOINT WRAP PRIMER - CONSEAL CS-75 (1 gal.) 0 lb
  - 1) 48" - MH INVERT CHANNEL - FULL HEIGHT 1440 lb
  - 2) 48" - Conseal CS-102 1.00" (Double) 0 lb
  - 2) PSX - 12-08 NYLO 16 lb
  - 2) PSX - 12-06 NYLO 16 lb
  - 7) MH Step ML-10-TDS-NCR - 10" 0 lb
- Structure Total: 10072 lb



| Position | Elev    | Angle | Pipe         | Pipe OD | Hole | Connector      | Up (L) | Ref |
|----------|---------|-------|--------------|---------|------|----------------|--------|-----|
| Rim      | 779.64' |       |              |         |      |                |        |     |
| Reducer  |         |       |              |         |      |                |        |     |
| Invert 1 | 770.87' | 0°    | 8" PVC SDR35 | 8.5"    | 12"  | PSX 12-08 NYLO | 1"     | P1  |
| Invert 2 | 771.37' | 98°   | 6" PVC SDR35 | 6.25"   | 12"  | PSX 12-06 NYLO | 6"     | P1  |
| Invert 3 | 770.97' | 208°  | 8" PVC SDR35 | 8.5"    | 12"  | PSX 12-08 NYLO | 2.2"   | P1  |
| Invert 4 | 771.37' | 280°  | 6" PVC SDR35 | 6.25"   | 12"  | PSX 12-06 NYLO | 6"     | P1  |
| Invert 5 |         |       |              |         |      |                |        |     |
| Invert 6 |         |       |              |         |      |                |        |     |
| Invert 7 |         |       |              |         |      |                |        |     |
| Invert 8 |         |       |              |         |      |                |        |     |



**Cast (Int. Dim.) - Interior Dimensions**



Submittal Drawing  
 1/2/2026 1:20:11 PM

SUBMITTAL  
 APPROVED BY: