

**Job Name: 25-4403 - Old Heritage Subdivision Section 6**  
**Job Location: Shelbyville, KY 40065**  
**Contractor: Filcon Construction**

PC: C. Goff  
 TECH: J. Horsey - F  
 Plant: 100



Structure ID: 299  
 Spec: Sanitary  
 Type: SAN.MH  
 Size: 48"

Rim: 783.91'  
 Invert: 775.48'  
 Rim to Invert: 8.43'

Sump: 3"  
 Floor (Top): 775.23'  
 Floor Height: 6"

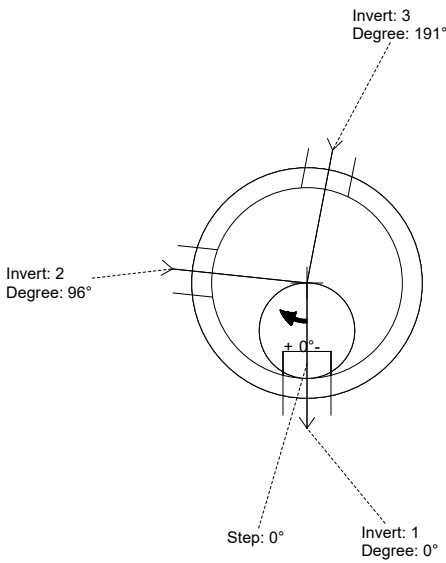
Floor (Bot): 774.73'  
 Overall Height: 9.083'  
 Slack: 1.16"

**Structure Notes:**

1. PER ASTM C-478 SPECIFICATIONS
2. CONCRETE: 4,000 PSI AT 28 DAYS
3. REINFORCEMENT: PER ASTM A615
4. INVERT CHANNEL REQUIRED
5. STEPS AT 0 DEGREES
6. CASTING SUPPLIED BY OTHERS

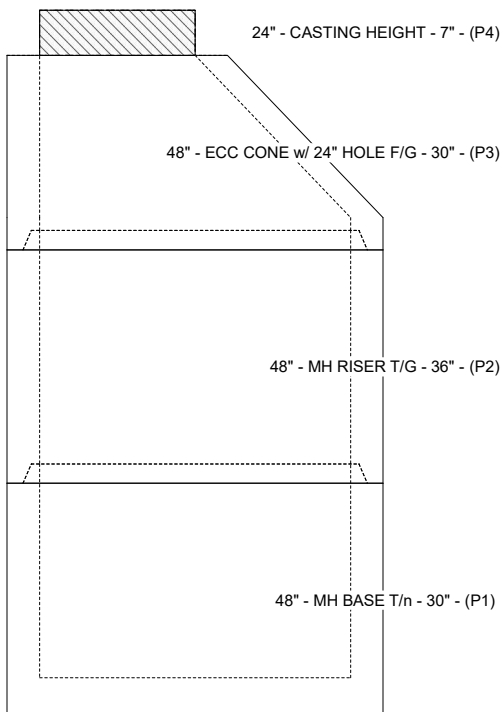
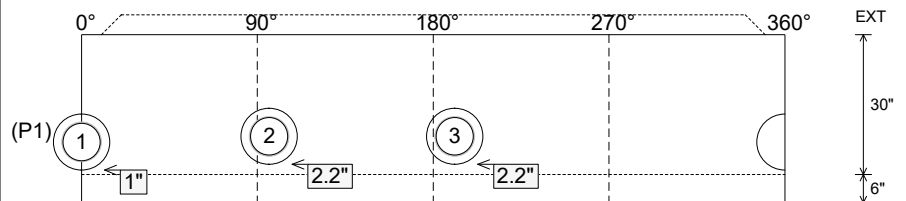
**STRUCTURE SUMMARY:**

- P4) 24" - CASTING HEIGHT - 7" 0 lb
  - P3) 48" - ECC CONE w/ 24" HOLE F/G - 30" 2050 lb
  - P2) 48" - MH RISER T/G - 36" 2515 lb
  - P1) 48" - MH BASE T/n - 30" 3282 lb
  - 1) JOINT WRAP - 0.065"x6"x50' CONSEAL CS212 0 lb
  - 1) JOINT WRAP PRIMER - CONSEAL CS-75 (1 gal.) 0 lb
  - 1) 48" - MH INVERT CHANNEL - FULL HEIGHT 1440 lb
  - 2) 48" - Conseal CS-102 1.00" (Double) 0 lb
  - 3) PSX - 12-08 NYLO 24 lb
  - 8) MH Step ML-10-TDS-NCR - 10" 0 lb
- Structure Total: 9311 lb



Position	Elev	Angle	Pipe	Pipe OD	Hole	Connector	Up (L)	Ref
Rim	783.91'							
Reducer								
Invert 1	775.48'	0°	8" PVC SDR35	8.5"	12"	PSX 12-08 NYLO	1"	P1
Invert 2	775.58'	96°	8" PVC SDR35	8.5"	12"	PSX 12-08 NYLO	2.2"	P1
Invert 3	775.58'	191°	8" PVC SDR35	8.5"	12"	PSX 12-08 NYLO	2.2"	P1
Invert 4								
Invert 5								
Invert 6								
Invert 7								
Invert 8								

**Cast (Int. Dim.) - Interior Dimensions**



Submittal Drawing  
 1/2/2026 1:20:12 PM

SUBMITTAL  
 APPROVED BY: