

Job Name: 25-4403 - Old Heritage Subdivision Section 6
 Job Location: Shelbyville, KY 40065
 Contractor: Filcon Construction

Plant: 100
 1/3/2026 12:54:30 PM

Tech: J. Hortsey - F
 PC: C. Goff



Structure ID: 18+59.96 LN 9

P2 BX036048-06LD08S

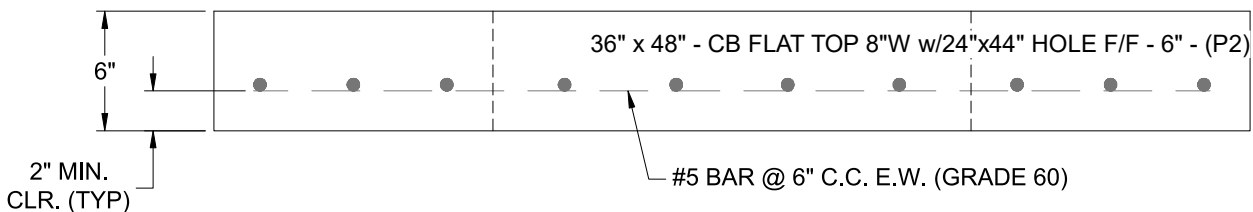
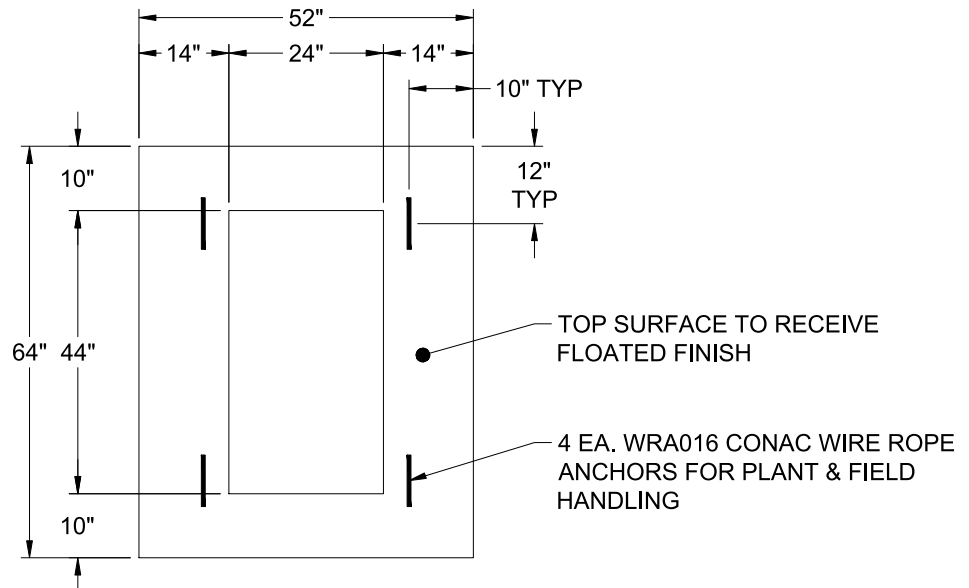
CB FLAT TOP 8"W w/24"x44" HOLE F/F

- P3) 24" x 44" - CASTING HEIGHT - 3.50"
- P2) 36" x 48" - CB FLAT TOP 8"W w/24"x44" HOLE F/F - 6"
- P1) 36" x 48" - BOX BASE 8inW, 8inF, Variable Ht F/n - 25"
- 1) 36" x 48" - Conseal CS-102 1.00"
- 1) DOGHOUSE INVRTD (ELLIP) - 40"x28.50"
- 1) Hole - 20
- 1) Hole - 16

0 lb
 1144 lb
 4556 lb
 0 lb
 0 lb
 0 lb
 0 lb

 Structure Total: 5700 lb

- Structure Notes:
1. PER ASTM C-913 SPECIFICATIONS
 2. CONCRETE: 4,000 PSI AT 28 DAYS
 3. REINFORCEMENT: #5 BAR @ 6" C.C. E.W. (GRADE 60) - 2" MIN. REBAR CLEARANCE (TYP)
 4. NO INVERT CHANNEL
 5. NO STEPS
 6. CASTING SUPPLIED BY OTHERS
 7. LIFTERS: 4 EA. WRA016 CONAC WIRE ROPE ANCHORS FOR PLANT & FIELD HANDLING



| | | | | |
|----------------------------------|--------------------------------|--------------------|------------------|--|
| Coating (Int): Coating (Ext): | Seam Up: Flat Seam Dn: Flat | Wall Thickness: 8" | Height (Ext): 6" | Weight (Net): 1144 lb Volume (Net): 0.29cu.yd |
|----------------------------------|--------------------------------|--------------------|------------------|--|