

Job Name: 25-4403 - Old Heritage Subdivision Section 6
Job Location: Shelbyville, KY 40065
Contractor: Filcon Construction

PC: C. Goff
 TECH: J. Horsey - F
 Plant: 100



Structure ID: 16+68.81 LN 9

Spec: Storm
 Type: STM.MH
 Size: 48"

Rim: 784.94'
 Invert: 779.34'
 Rim to Invert: 5.6'

Sump: 3.718"
 Floor (Top): 779.03'
 Floor Height: 6"

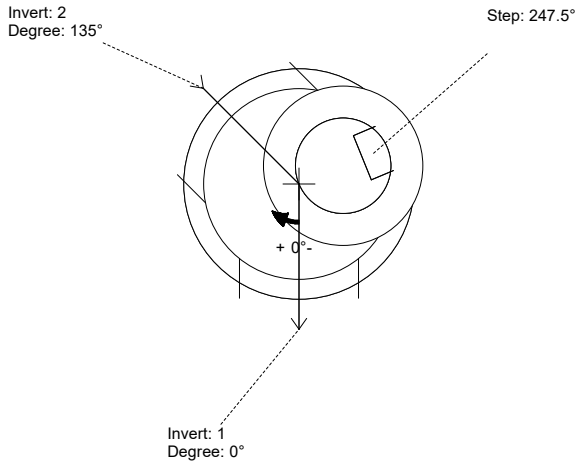
Floor (Bot): 778.53'
 Overall Height: 6.333'
 Slack: 0.919"

Structure Notes:

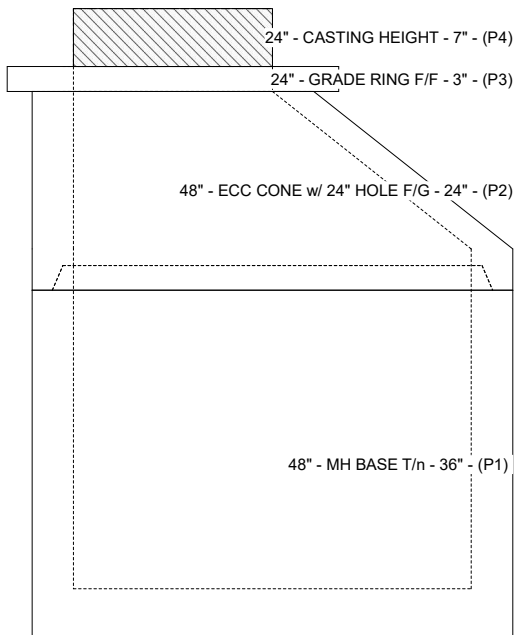
1. PER ASTM C-478 SPECIFICATIONS
2. CONCRETE: 4,000 PSI AT 28 DAYS
3. REINFORCEMENT: PER ASTM A615
4. NO INVERT CHANNEL
5. STEPS AT 247.5 DEGREES
6. CASTING SUPPLIED BY OTHERS

STRUCTURE SUMMARY:

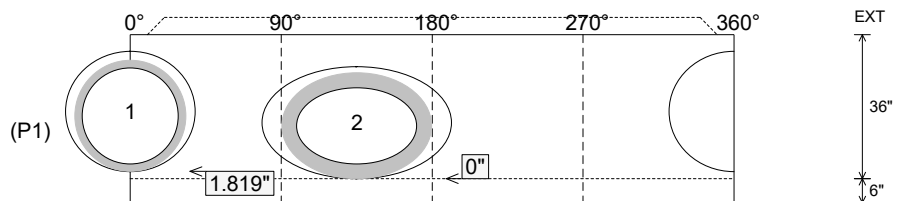
P4) 24" - CASTING HEIGHT - 7"	0 lb
P3) 24" - GRADE RING F/F - 3"	202 lb
P2) 48" - ECC CONE w/ 24" HOLE F/G - 24"	1550 lb
P1) 48" - MH BASE T/n - 36"	3107 lb
1) 48" - Conseal CS-102 1.00"	0 lb
1) Hole - 30	0 lb
1) Hole - 40 x 28	0 lb
5) MH Step ML-10-TDS-NCR - 10"	0 lb
Structure Total:	4860 lb



Position	Elev	Angle	Pipe	Pipe OD	Hole	Connector	Up ()	Ref
Rim	784.94'							
Reducer								
Invert 1	779.34'	0°	24" HDPE	27.8"	30"	Hole 30	1.819"	P1
Invert 2	779.34'	135°	30" x 19" ELL RCP	37.375" x 26.437"	40" x 28"	Hole 40 x 28	0"	P1
Invert 3								
Invert 4								
Invert 5								
Invert 6								
Invert 7								
Invert 8								



Cast (Int. Dim.) - Interior Dimensions



Submittal Drawing
 1/2/2026 1:20:28 PM

SUBMITTAL
 APPROVED BY: