

Job Name: 25-4403 - Old Heritage Subdivision Section 6
 Job Location: Shelbyville, KY 40065
 Contractor: Filcon Construction

Plant: 100

Tech: J. Horsey - F

1/3/2026 12:51:57 PM

PC: C. Goff



Structure ID: 16+68.81 LN 9

P1 MH048BA36

MH BASE T/n

- P4) 24" - CASTING HEIGHT - 7"
- P3) 24" - GRADE RING F/F - 3"
- P2) 48" - ECC CONE w/ 24" HOLE F/G - 24"
- P1) 48" - MH BASE T/n - 36"
- 1) 48" - Conseal CS-102 1.00"
- 1) Hole - 30
- 1) Hole - 40 x 28
- 5) MH Step ML-10-TDS-NCR - 10"

0 lb
 202 lb
 1550 lb
 3107 lb
 0 lb
 0 lb
 0 lb
 0 lb
 0 lb
 Structure Total: 4860 lb

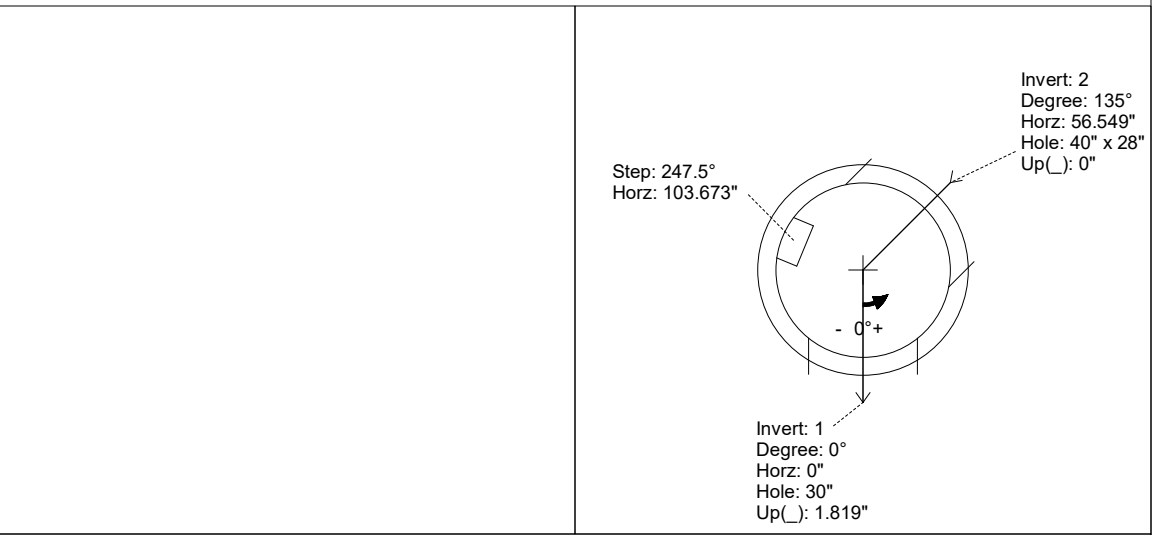
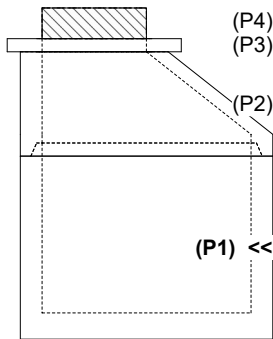
- Structure Notes:**
1. PER ASTM C-478 SPECIFICATIONS
 2. CONCRETE: 4,000 PSI AT 28 DAYS
 3. REINFORCEMENT: PER ASTM A615
 4. NO INVERT CHANNEL
 5. STEPS AT 247.5 DEGREES
 6. CASTING SUPPLIED BY OTHERS

Rim: 784.94' Rim to Invert: 5.6' Slack: 0.919" Sump: 3.718" Step Position: 247.5°

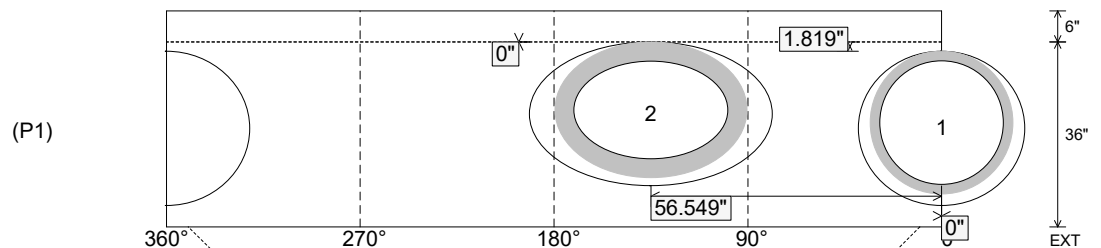
Position	Elev	Angle	Ext. (cw)	Pipe	Pipe OD	Connector	Hole	Horz Size	Up ()	Offset
Invert 1	779.34'	0°	0"	24" HDPE	27.8"	Hole 30	30"	32.406"	1.819"	0"
Invert 2	779.34'	135°	68.33"	30" x 19" ELL RCP	37.375" x 26.437"	Hole 40 x 28	40" x 28"	47.285"	0"	0"
Invert 3										
Invert 4										
Invert 5										
Invert 6										
Invert 7										
Invert 8										

RIGHT-SIDE UP VIEW (int. dimensions)

UPSIDE-DOWN VIEW (int. dimenions)



INSIDE WALL DIMENSIONS



Coating (Int):
 Coating (Ext):

Seam Up: Tongue
 Seam Dn: n/a

Wall Thickness: 5"
 Floor Height: 6"

Height (Int): 36"
 Height (Ext): 42"

Weight (Net): 3107 lb
 Volume (Net): 0.79cu.yd