

Job Name: 25-4403 - Old Heritage Subdivision Section 6  
 Job Location: Shelbyville, KY 40065  
 Contractor: Filcon Construction

Plant: 100  
 1/3/2026 12:54:24 PM

Tech: J. Hortsey - F  
 PC: C. Goff



**Structure ID: 14+15.35 LN 8**

**P2 BX036048-06LD08S**

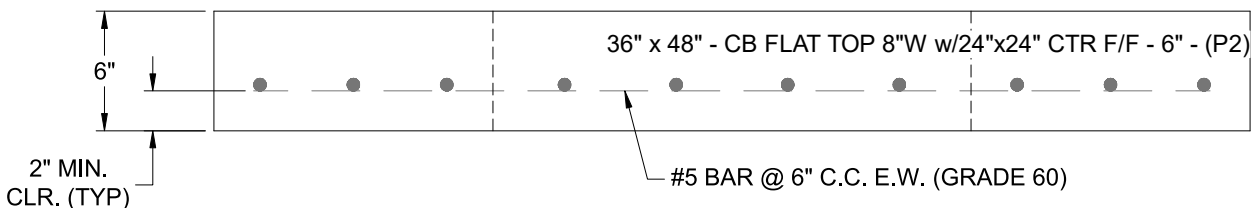
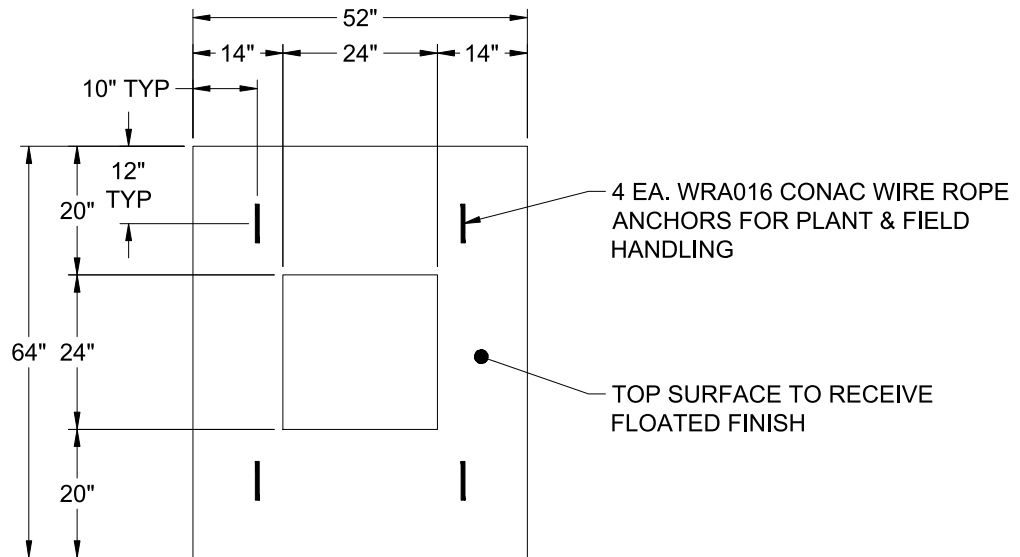
**CB FLAT TOP 8"W w/24"x24" CTR F/F**

- P3) 24" x 24" - CASTING HEIGHT - 3.50"
- P2) 36" x 48" - CB FLAT TOP 8"W w/24"x24" CTR F/F - 6"
- P1) 36" x 48" - BOX BASE 8inW, 8inF, Variable Ht F/n - 34"
- 1) 36" x 48" - Conseal CS-102 1.00"
- 1) 24" x 24" - Conseal CS-102 1.00"
- 1) Hole - 30
- 1) Hole - 40 x 28

0 lb  
 1386 lb  
 5734 lb  
 0 lb  
 0 lb  
 0 lb  
 0 lb  
 -----  
 7119 lb

Structure Total: 7119 lb

- Structure Notes:**
1. PER ASTM C-913 SPECIFICATIONS
  2. CONCRETE: 4,000 PSI AT 28 DAYS
  3. REINFORCEMENT: #5 BAR @ 6" C.C. E.W. (GRADE 60) - 2" MIN. REBAR CLEARANCE (TYP)
  4. NO INVERT CHANNEL
  5. NO STEPS
  6. CASTING SUPPLIED BY OTHERS
  7. LIFTERS: 4 EA. WRA016 CONAC WIRE ROPE ANCHORS FOR PLANT & FIELD HANDLING



Coating (Int):  
 Coating (Ext):

Seam Up: Flat  
 Seam Dn: Flat

Wall Thickness: 8"

Height (Ext): 6"

Weight (Net): 1386 lb  
 Volume (Net): 0.35cu.yd