

Job Name: 25-4403 - Old Heritage Subdivision Section 6  
 Job Location: Shelbyville, KY 40065  
 Contractor: Filcon Construction

Plant: 100

1/3/2026 12:54:31 PM

Tech: J. Hortsey - F

PC: C. Goff



**Structure ID: 12+55.42 LN 6**

**P2 BX024030-08LD06S**

**CB FLAT TOP 8"W w/24"x24"Hole F/F**

- P3) 24" x 24" - CASTING HEIGHT - 3.50"
- P2) 24" x 30" - CB FLAT TOP 8"W w/24"x24"Hole F/F - 6"
- P1) 24" x 30" - BOX BASE 8inW, 8inF, Variable Ht F/n - 17"
- 1) 24" x 30" - Conseal CS-102 1.00"
- 1) 24" x 24" - Conseal CS-102 1.00"
- 1) DOGHOUSE INVRTD - 16"x18"

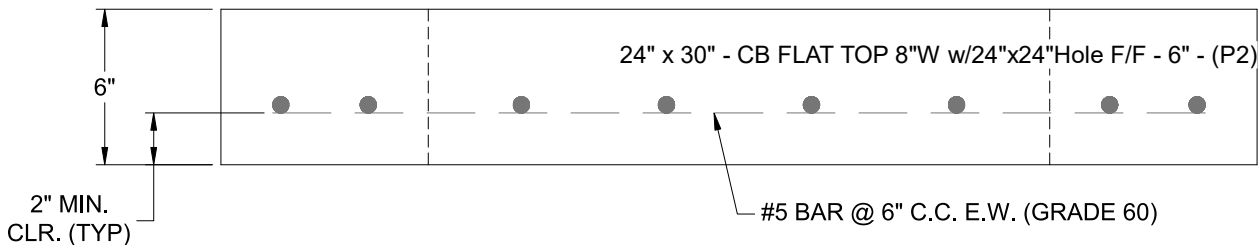
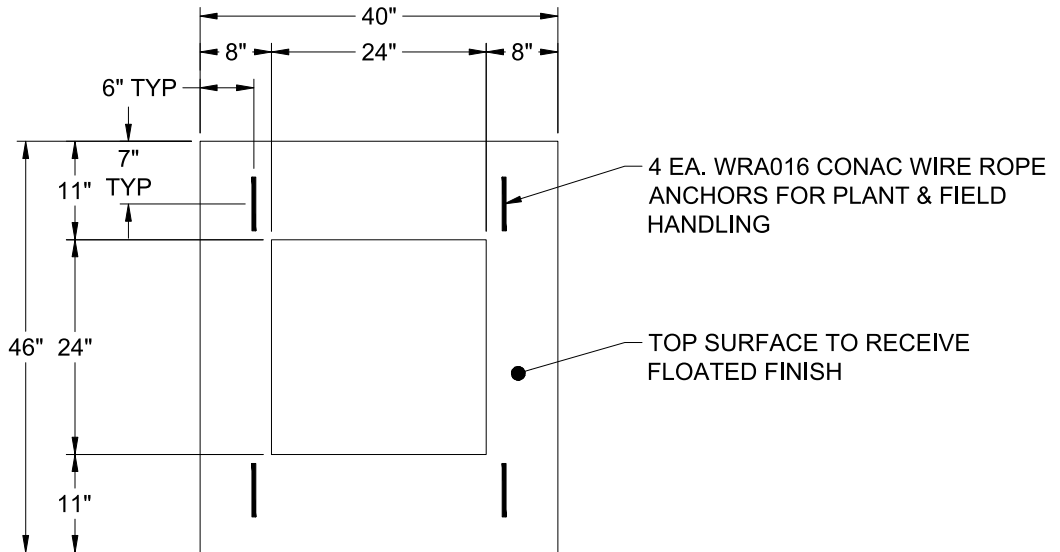
0 lb  
 636 lb  
 2604 lb  
 0 lb  
 0 lb  
 0 lb  
 -----  
 0 lb

Structure Total:

3240 lb

Structure Notes:

1. PER ASTM C-913 SPECIFICATIONS
2. CONCRETE: 4,000 PSI AT 28 DAYS
3. REINFORCEMENT: #5 BAR @ 6" C.C. E.W. (GRADE 60) - 2" MIN. REBAR CLEARANCE (TYP)
4. NO INVERT CHANNEL
5. NO STEPS
6. CASTING SUPPLIED BY OTHERS
7. LIFTERS: 4 EA. WRA016 CONAC WIRE ROPE ANCHORS FOR PLANT & FIELD HANDLING



Coating (Int):  
 Coating (Ext):

Seam Up: Flat  
 Seam Dn: Flat

Wall Thickness: 8"

Height (Ext): 6"

Weight (Net): 636 lb  
 Volume (Net): 0.16cu.yd