

Job Name: 25-4403 - Old Heritage Subdivision Section 6
 Job Location: Shelbyville, KY 40065
 Contractor: Filcon Construction

Plant: 100
 1/3/2026 12:54:32 PM

Tech: J. Hortsey - F
 PC: C. Goff



Structure ID: 10+49.22 LN 14

P3 MH048LD12-24X36RECT

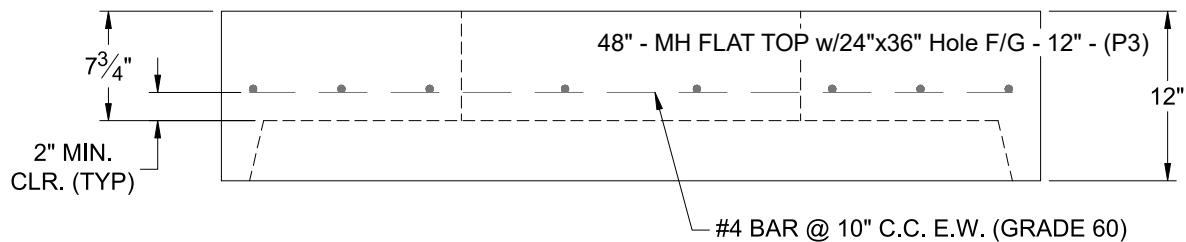
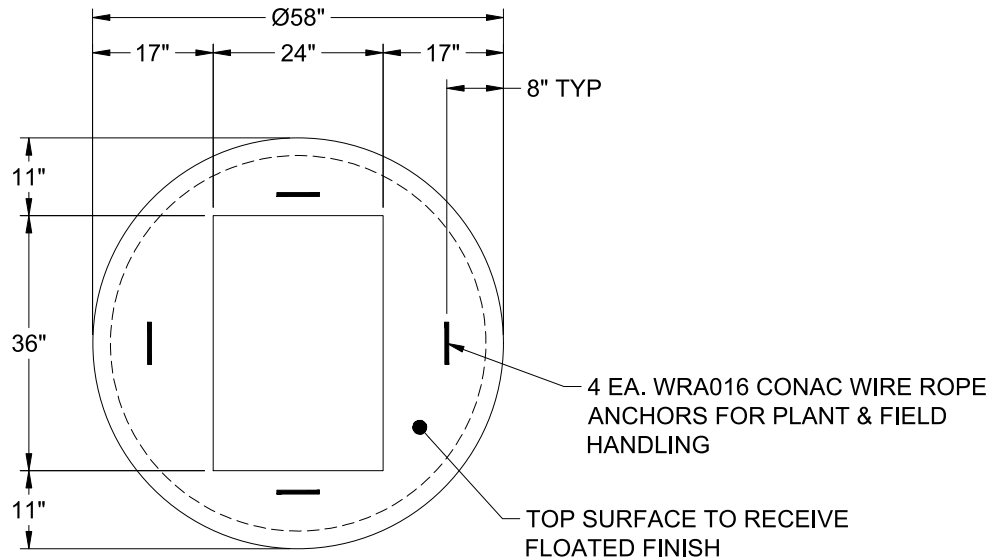
MH FLAT TOP w/24"x36" Hole F/G

- P4) 24" x 36" - CASTING HEIGHT - 4"
- P3) 48" - MH FLAT TOP w/24"x36" Hole F/G - 12"
- P2) 48" - MH RISER T/G - 36"
- P1) 48" - MH BASE T/n - 42"
- 2) 48" - Conseal CS-102 1.00"
- 1) 24" x 36" - Conseal CS-102 1.00"
- 2) Hole - 16
- 6) MH Step ML-10-TDS-NCR - 10"

0 lb
 1300 lb
 2515 lb
 4036 lb
 0 lb
 0 lb
 0 lb
 0 lb

 Structure Total: 7851 lb

- Structure Notes:**
1. PER MSD CB TYPE 2 / ASTM C-478 SPECIFICATIONS
 2. CONCRETE: 4,000 PSI AT 28 DAYS
 3. REINFORCEMENT: #4 BAR @ 10" C.C. E.W. (GRADE 60) - 2" MIN. REBAR CLEARANCE (TYP)
 4. NO INVERT CHANNEL
 5. STEPS AT 270 DEGREES
 6. CASTING SUPPLIED BY OTHERS
 7. LIFTERS: 4 EA. WRA016 CONAC WIRE ROPE ANCHORS FOR PLANT & FIELD HANDLING



Coating (Int):
 Coating (Ext):

Seam Up: Flat
 Seam Dn: Groove

Wall Thickness: 5"

Height (Ext): 12"

Weight (Net): 1300 lb
 Volume (Net): 0.46cu.yd