



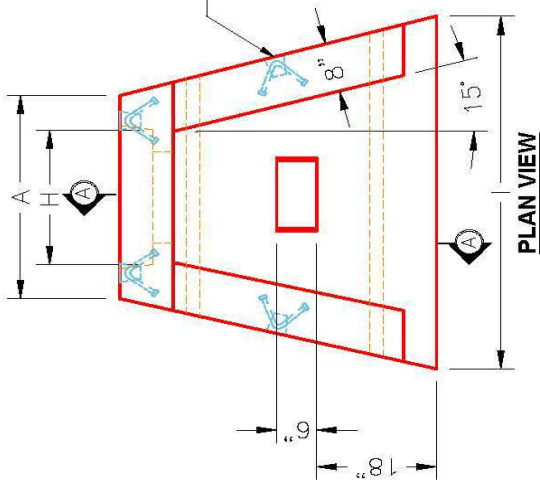
Structure ID: 10+20.75

P1 HWSFCRSTN15D

15" - S&F CREEKSTONE HEADWALL w/DISS F/F

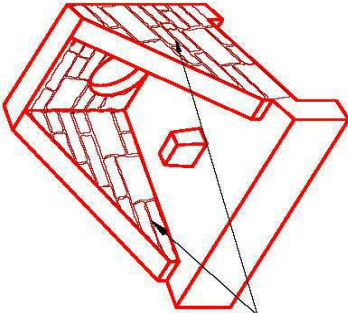
DIMENSIONS

PIPE ϕ	A	B	C	D	E	F	G	H	I	WEIGHT	DISSIPATORS
15"	2'-9"	3'-6"	2'-0"	1'-6"	4'-0"	3"	2 $\frac{3}{8}$ "	2'-0"	4'-9"	3,161 LBS.	1 EA.

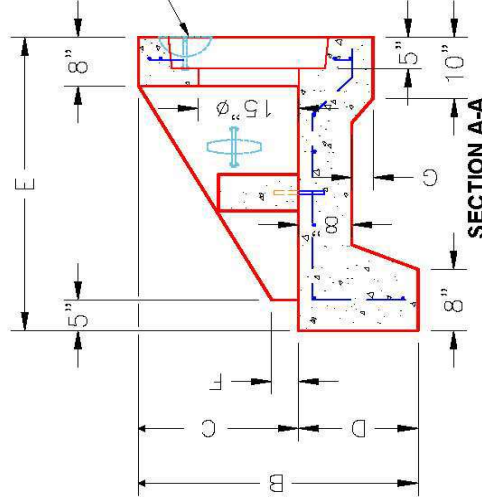


"A-ANCHOR" LIFTING SYSTEM FOR PLANT & FIELD HANDLING.

CREEKSTONE HEADWALL LINER (DAYTON SUPERIOR - BUFFALO DRYSTACK) INTERIOR AND EXTERIOR WALLS



15" ϕ TO 24" ϕ STEPPED HOLE FORMER FOR 15" ϕ PIPE. 15" ϕ TO BE FLUSH WITH FLOOR.



2-#5 BAR STUBS FOR POST MOUNTING TO HEADWALL FLOOR.

DISSIPATOR BLOCK DETAIL

DESCRIPTION: 15in SLOPED & FLARED CREEKSTONE HEADWALL w/ ENERGY DISSIPATORS

CUSTOMER:	STOCK
PROJECT:	STOCK
STRUCTURE ID.:	STOCK
QUOTE/SALES ORDER NO.:	
PC:	DRAWING: J. HORSLEY
DATE:	02/06/24
SCALE:	NTS
	PG. 1 of 1

FRONT ELEVATION

1. CONCRETE: 4500 PSI @ 28 DAYS.
2. REINFORCING: #4 BAR @ 12" C/C E.W.-GRADE 60, (WITH 2" CONCRETE COVER MINIMUM)
3. REINFORCING BARS TO BE TACK WELDED OR TIED.
4. DRAWING TO BE USED IN CONJUNCTION WITH KYTC STD. DRAWING RDH-02D-03 AND THE STANDARD SPECIFICATIONS FOR ROAD AND BRIDGE CONSTRUCTION.
5. CHAMFER ON ALL EXPOSED EDGES.

PRODUCTION WORK ORDER

PRODUCT I.D.:	HWSFCRSTN15D
PRODUCT VIEW:	RIGHT SIDE UP
PLANT:	BEAVER DAM, KY.
WEIGHT:	3,161 LBS.
TOP SECTION JOINT:	N/A
BASE SECTION JOINT:	N/A
QC CHECK INITIALS:	

QUALITY CONTROL CHECKLIST

- ALL DIMENSIONS CORRECT.
- LIFTERS INSTALLED.
- STEPPED HF CORRECT SIZE.
- REINFORCING CORRECT.
- DISSIPATOR BLOCK INSTALLED.
- EDGES CHAMFERED.
- ALL PATCHWORK ACCEPTABLE.

