

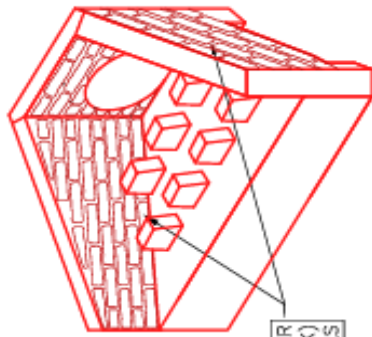


**Structure ID: 10+19.55**

**P1 HWPCRSTN36D**

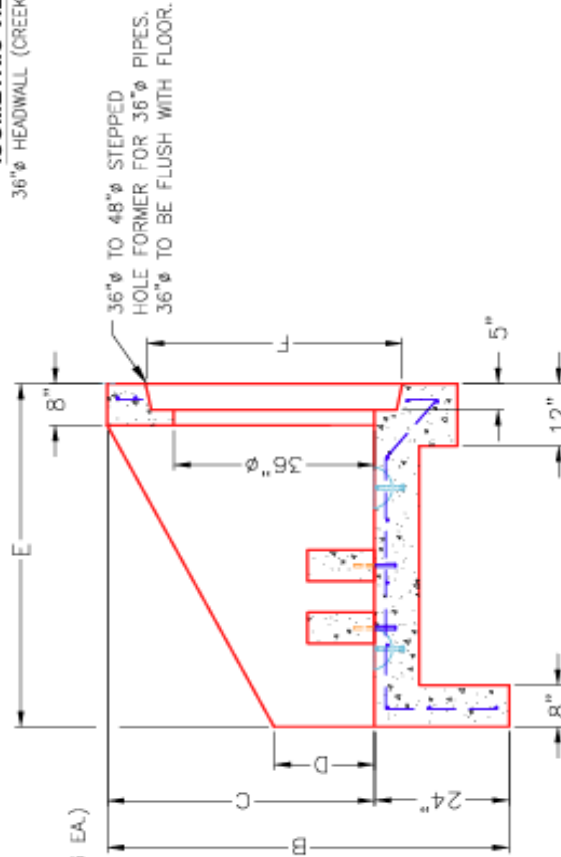
**36" - PC CREEKSTONE HEADWALL w/DISS F/F**

DIMENSIONS									
PIPE Ø	A	B	C	D	E	F	G	H	WEIGHT
36"	4'-6"	6'-0"	4'-0"	1'-6"	5'-0"	4'-0"	8'-8"	5'-8"	8,550 lbs.

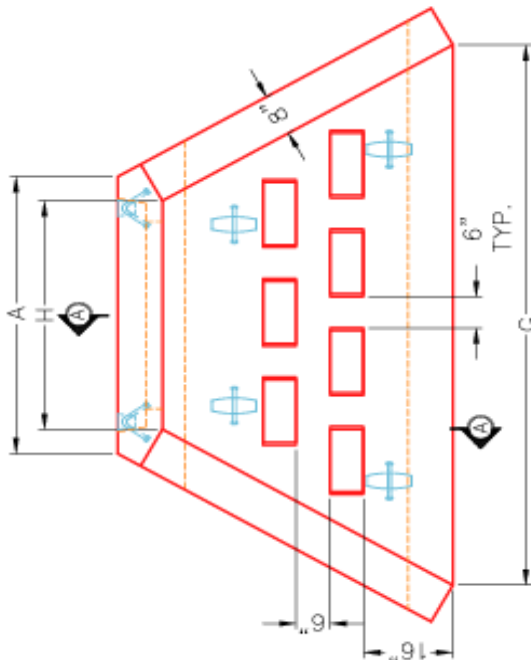


**ISOMETRIC VIEW**  
 36"Ø HEADWALL (CREEKSTONE)

CREEKSTONE HEADWALL LINER  
 (DAYTON SUPERIOR - BUFFALO DRYSTACK)  
 INTERIOR AND EXTERIOR WALLS



**SECTION A-A**



**PLAN VIEW**

**FRONT ELEVATION**

**NOTES:**

1. CONCRETE: KYTC APPROVED.
2. REINFORCING: #5 BAR @ 12" C/C E.W. - GRADE 60, (WITH 2" CONCRETE COVER MINIMUM)
3. REINFORCING BARS TO BE TACK WELDED OR TIED.
4. PIPE AND LIFTING ANCHOR POCKETS TO BE GROUTED WITH KYTC APPROVED NON-SHRINK GROUT AFTER SETTING ON SITE BY OTHERS.
5. DRAWING TO BE USED IN CONJUNCTION WITH KYTC STD. DRAWING RDH-050-02 AND THE STANDARD SPECIFICATIONS FOR ROAD AND BRIDGE CONSTRUCTION.
6. PREFORMED STEPPED HOLE SIZED AS PER O.D. OF PIPE + 3" - 4".
7. 3/4" CHAMFER REQUIRED ON TOP & INSIDE, EXPOSED EDGES.



**INFRASTRUCTURE PRECAST, INC.**

981 WEST 7TH ST., BEAVER DAM, KY, 42200  
 PHONE: (270) 363-2266, FAX: (270) 298-7424

KYTC 30"-60" CREEKSTONE PIPE  
 CULVERT HEADWALL W/ DISSIPATORS

CATALOG NO.: KYTC PC-HW DATE: 12-15-25  
 REVIEWED BY: J.H. ROSS, PE DRAWN BY: J. COPPAGE  
 WEB: WWW.IPCASTING.COM SCALE: NTS