

Job Name: 25-4403 - Old Heritage Subdivision Section 6
 Job Location: Shelbyville, KY 40065
 Contractor: Filcon Construction

Plant: 100

1/5/2026 10:30:00 AM

Tech: J. Horsey - F

PC: C. Goff



Structure ID: 10+00.00 LN 8

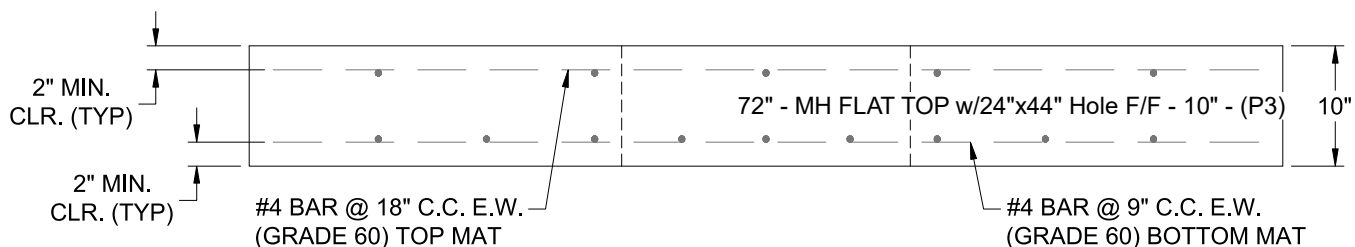
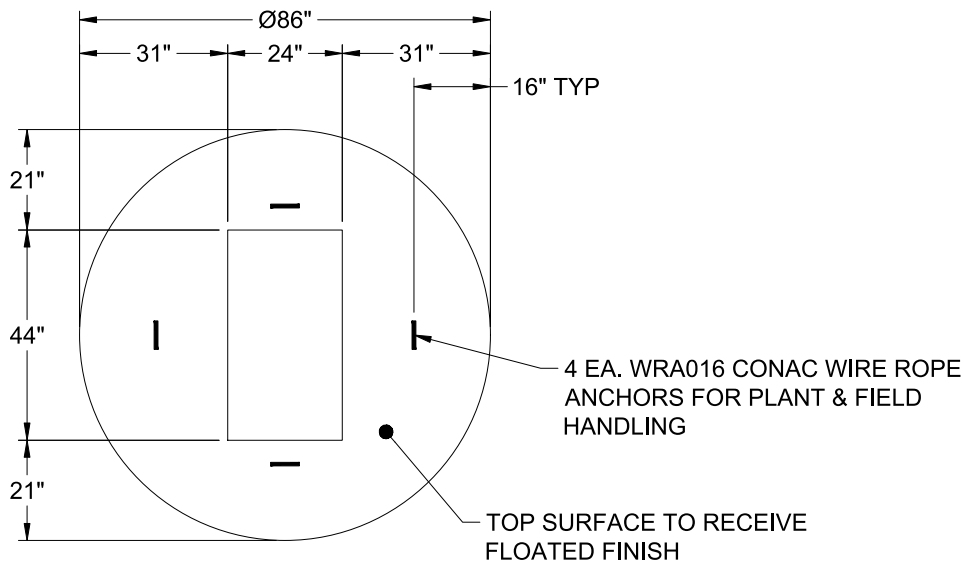
P3 MH072LD10S

MH FLAT TOP w/24"x44" Hole F/F

- P4) 24" x 44" - CASTING HEIGHT - 3.50"
- P3) 72" - MH FLAT TOP w/24"x44" Hole F/F - 10"
- P2) 72" - MH RISER F/G - 36"
- P1) 72" - MH BASE Custom Ht T/n - 69"
- 2) 72" - Conseal CS-102 1.00"
- 2) Hole - 44"
- 1) Hole - 30"
- 9) MH Step ML-10-TDS-NCR - 10"

	0 lb
	3988 lb
	4776 lb
	12106 lb
	0 lb
	0 lb
	0 lb
	0 lb
Structure Total:	20870 lb

- Structure Notes:
1. PER ASTM C-478 SPECIFICATIONS
 2. CONCRETE: 4,000 PSI AT 28 DAYS
 3. REINFORCEMENT - 2" MIN. REBAR CLEARANCE (TYP):
 - TOP MAT: #4 BAR @ 18" C.C. E.W. (GRADE 60)
 - BOTTOM MAT: #4 BAR @ 9" C.C. E.W. (GRADE 60)
 4. NO INVERT CHANNEL
 5. STEPS AT 269 DEGREES
 6. CASTING SUPPLIED BY OTHERS
 7. LIFTERS: 4 EA. WRA016 CONAC WIRE ROPE ANCHORS FOR PLANT & FIELD HANDLING



Coating (Int):
 Coating (Ext):

Seam Up: Flat
 Seam Dn: Flat

Wall Thickness: 7"

Height (Ext): 10"

Weight (Net): 3988 lb
 Volume (Net): 1.02cu.yd