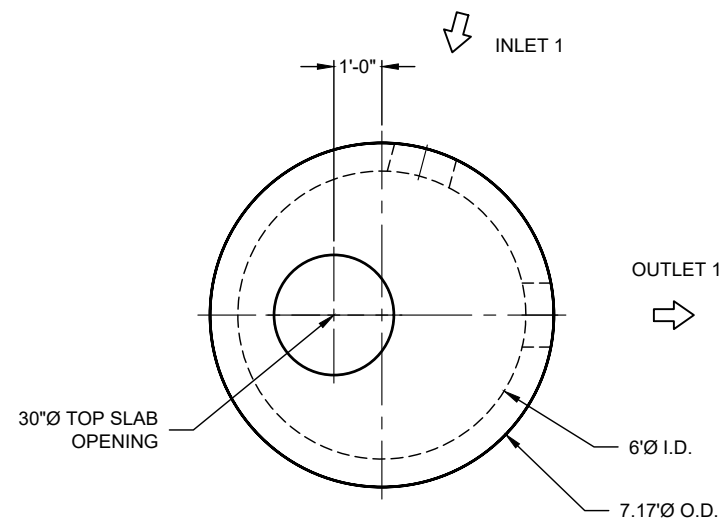
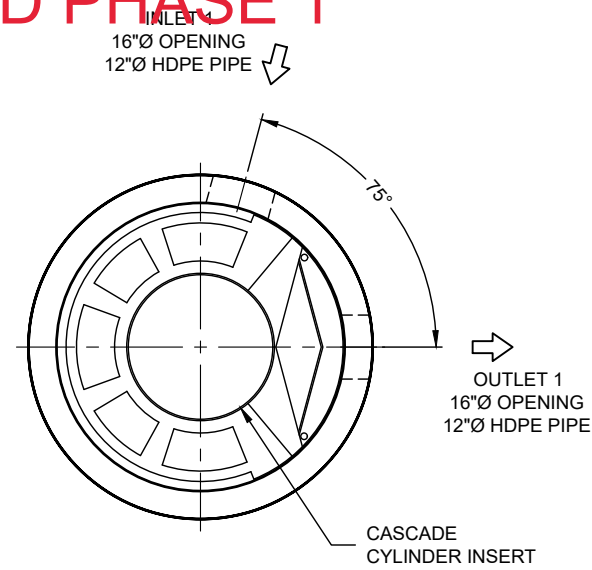


25-4373 - 855355 CAMP GROUND ROAD PHASE 1



PLAN VIEW
INTERNALS NOT SHOWN



PLAN VIEW FOR PIPE ORIENTATION
TOP SLAB NOT SHOWN

15-CS-6
ICAST to fully pre-assemble internal materials prior to shipment.

SEE INSTALLATION NOTE A

MATERIAL LIST

COUNT	DESCRIPTION	PART NUMBER	PROVIDED BY	INSTALLED BY
1	CS-6 CYLINDER INSERT, STD.	325-003951	CONTECH	PRECASTER
5	CS-6 ALUMINUM INSTALLATION BRACKETS	325-003956	CONTECH	PRECASTER
1	CS-6 HARDWARE KIT	325-003965	CONTECH	PRECASTER
1	SEALANT FOR JOINTS		PRECASTER	CONTRACTOR
1	30"Ø X 4" FRAME AND COVER, EJ #41600483, OR EQUIV.	325-000332	CONTECH	CONTRACTOR

GENERAL NOTES

- DESIGN LOADING - AASHTO HS-20
- ALL PRECAST CONCRETE MANUFACTURED PARTS SHALL CONFORM TO ASTM C-478, WITH MINIMUM CONCRETE STRENGTH OF 4000 PSI AT 28 DAYS
- JOINT SEALANT SHALL CONFORM TO ASTM C-990 OR ASTM C-443
- GROUND WATER ELEVATION ASSUMED AT OUTLET INVERT
- MANUFACTURING TOLERANCE = +/- 1/2-INCH
- SOME HIDDEN LINES MAY BE OMITTED FOR CLARITY

INSTALLATION NOTES

- PRECASTER TO SHIP ACCESS CASTINGS WITH STRUCTURE
- REFER TO CONTECH ASSEMBLY INSTRUCTIONS FOR ADDITIONAL INFORMATION.
- PRECASTER TO INSTALL INTERNAL COMPONENTS PRIOR TO SHIPPING UNLESS INSTRUCTED OTHERWISE BY CONTECH
- PIPE OPENINGS SHALL BE STENCILED "INLET" OR "OUTLET" AS APPROPRIATE
- APPLYING ALIGNMENT MARKS ON ALL PIECES OF MULTIPLE PIECE ASSEMBLIES IS ENCOURAGED
- IF STRUCTURE IS DELIVERED IN MULTIPLE SECTIONS, EACH PIECE SHALL BE LABELED WITH THE CONTECH PROJECT NUMBER, SEQUENCE NUMBER AND SITE DESIGNATION

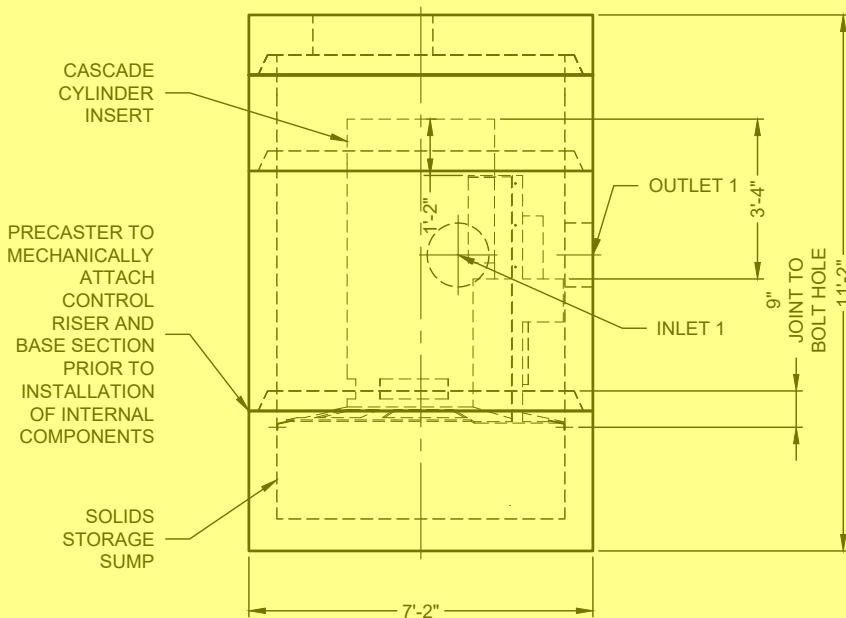
SITE INFORMATION

RIM ELEV. = 440.55+/-
 TOP OF STRUCTURE = 439.55
 INLET PIPE 1 INVERT ELEV. = 434.05
 INLET PIPE 1 DIAMETER AND MATERIAL = 12"Ø HDPE
 OUTLET PIPE INVERT ELEV. = 434.05
 OUTLET PIPE DIAMETER AND MATERIAL = 12"Ø HDPE
 OUTSIDE BOTTOM OF STRUCTURE ELEV. = 428.38

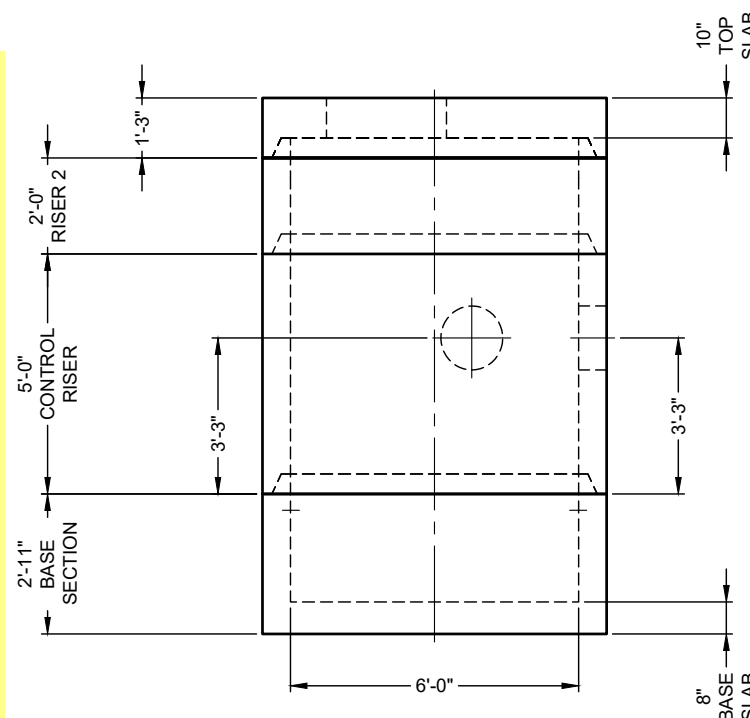
STRUCTURE WEIGHT

APPROXIMATE HEAVIEST PICK = 18000 LBS.
 STRUCTURE IS DELIVERED IN 3 PIECES

TOP SLAB = 5000 LBS.
 RISER 2 = 4000 LBS. LBS.
 CONTROL RISER = MECHANICALLY ATTACHED TO BASE SECTION
 BASE SECTION = 18000 LBS.



ELEVATION VIEW

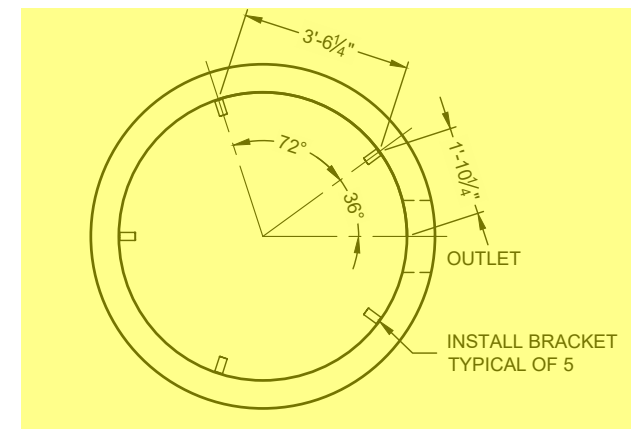


PRECAST COMPONENTS
INTERNALS NOT SHOWN

ICAST
5888 / 757440
LAYOUT 1A
12.86TS

CONTECH
FABRICATION
DRAWING

CONTECH
DRAWING



SUPPORT BRACKET LAYOUT PLAN VIEW

The design and information shown on this drawing is the property of CONTECH Construction Products, Inc. or one of its affiliated companies ("CONTECH"). Neither this drawing, nor any part thereof, may be used, reproduced, or transmitted in any form or by any means, electronic or mechanical, including photocopying, recording, or by any information storage and retrieval system, without the prior written consent of CONTECH. Failure to comply with these terms and conditions shall constitute a breach of contract and shall constitute a disclaimer of any liability or responsibility for such use. If discrepancies between the supplied information upon which the drawing is based and actual field conditions are encountered as site work progresses, these are to be resolved by the user. CONTECH shall not be held liable for re-evaluation of the design. CONTECH accepts no liability for designs based on missing, incomplete or inaccurate information supplied by others.

MARK	DATE	REVISION DESCRIPTION	BY

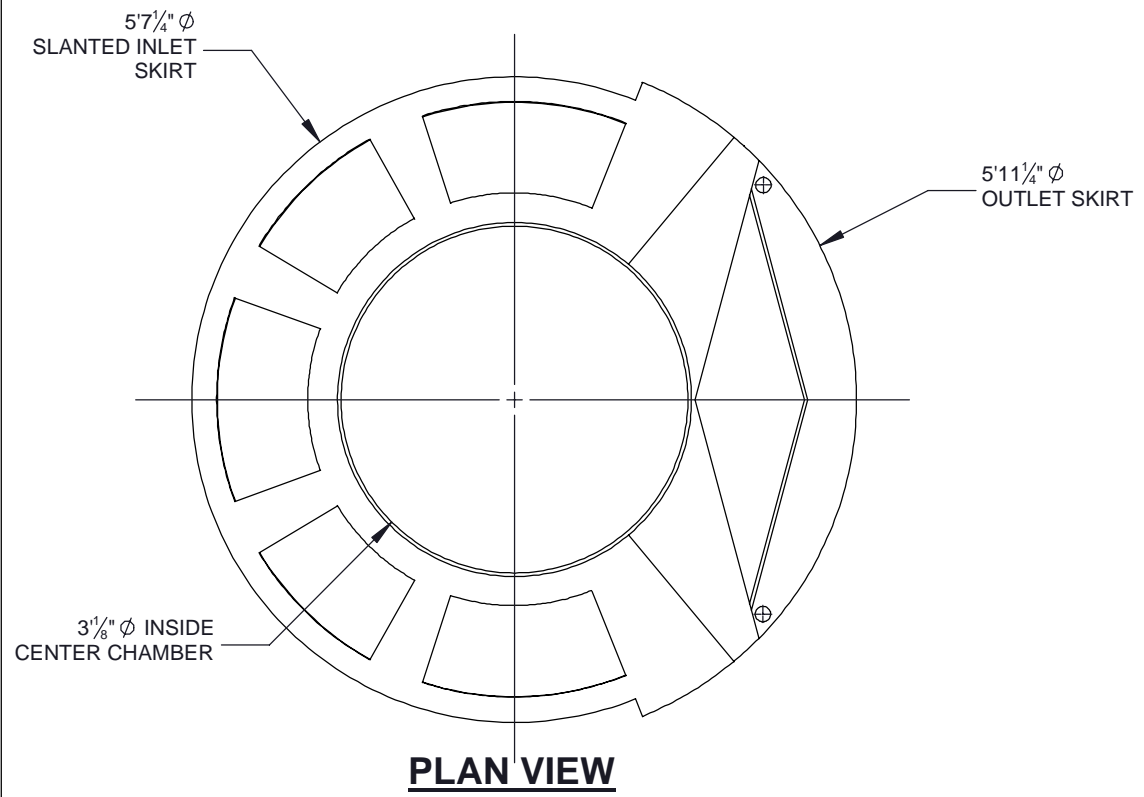
CS-6 - 855355-15
 CAMP GROUND ROAD PHASE 1
 CONSTRUCTION
 LOUISVILLE, KY
 SITE DESIGNATION: #27 WQU

CONTECH
 ENGINEERED SOLUTIONS LLC
 A CONTECH COMPANY
 810 Centre Pointe Dr., Suite 400, West Chester, OH 45380
 800.338.1122 513.645.7000 513.645.7833 FAX
CASCADE separator
 FOR PATENT INFORMATION, GO TO www.contech.com/P

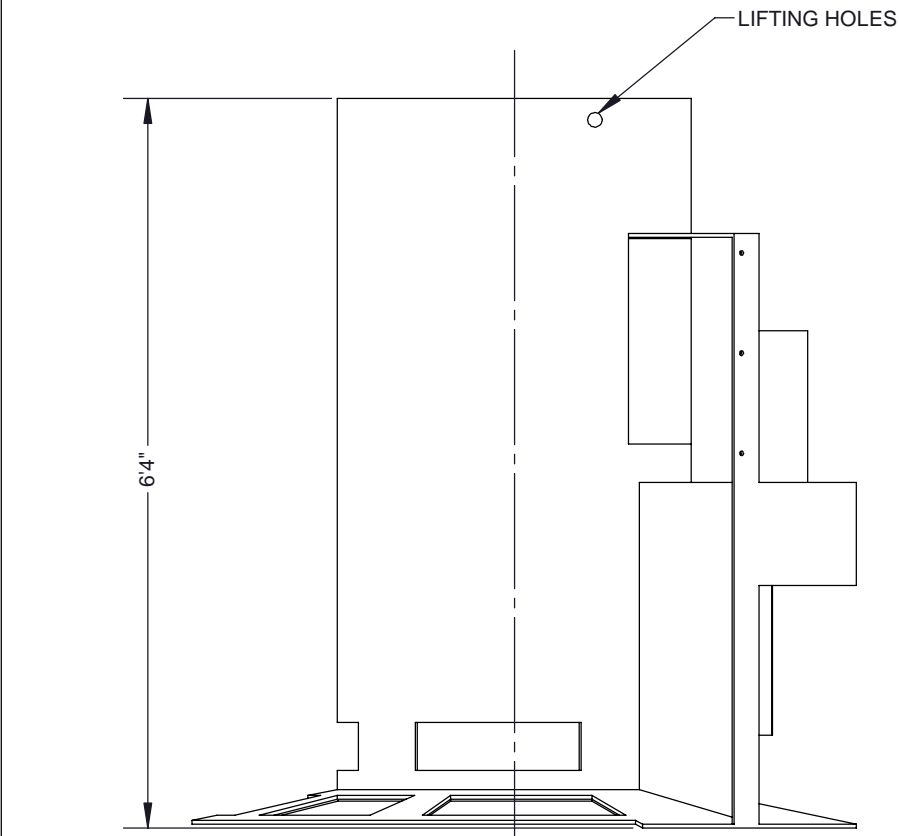
DATE:	9/15/2025		
DESIGNED:	MDB	DRAWN:	MDB
CHECKED:	CEU	APPROVED:	MDB
PROJECT No.:	855355	SEQUENCE No.:	15
SHEET:	1	OF	1

I:\QUIKRETE.NET\CONTECH\MERLIN\PROJECTS\TACTIVE\855355\855355-15-CASCADE\EDR\DRAWINGS\855355-15-CS-6-CONF\AB.DWG 10/22/2025 1:57 PM

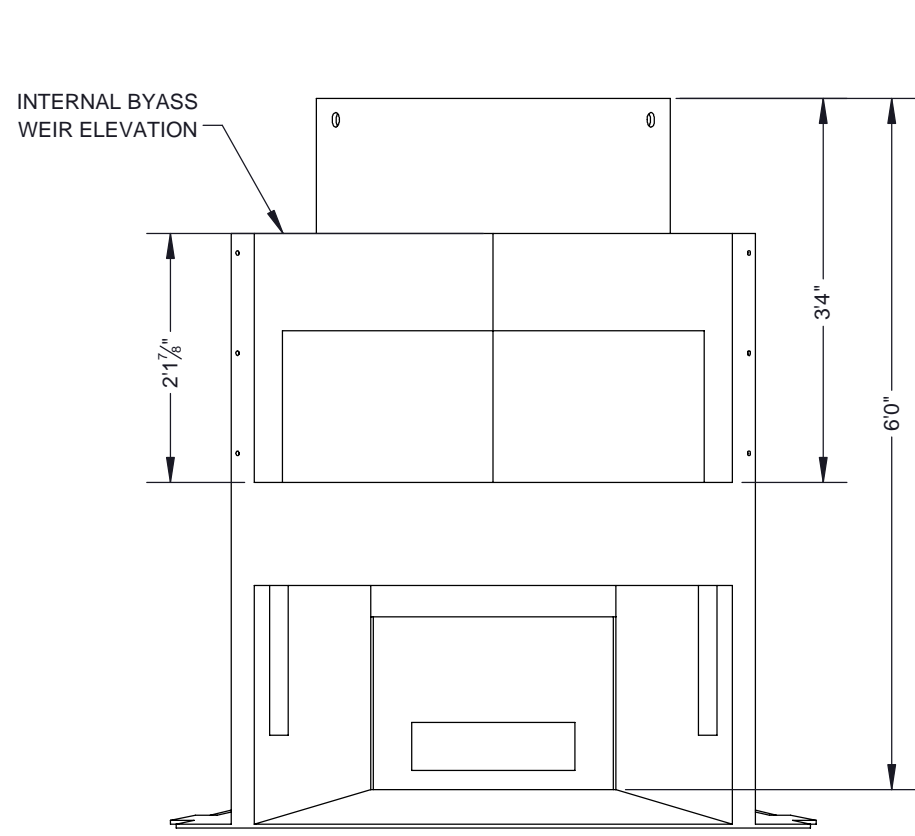
25-4373 - 855355 CAMP GROUND ROAD PHASE 1



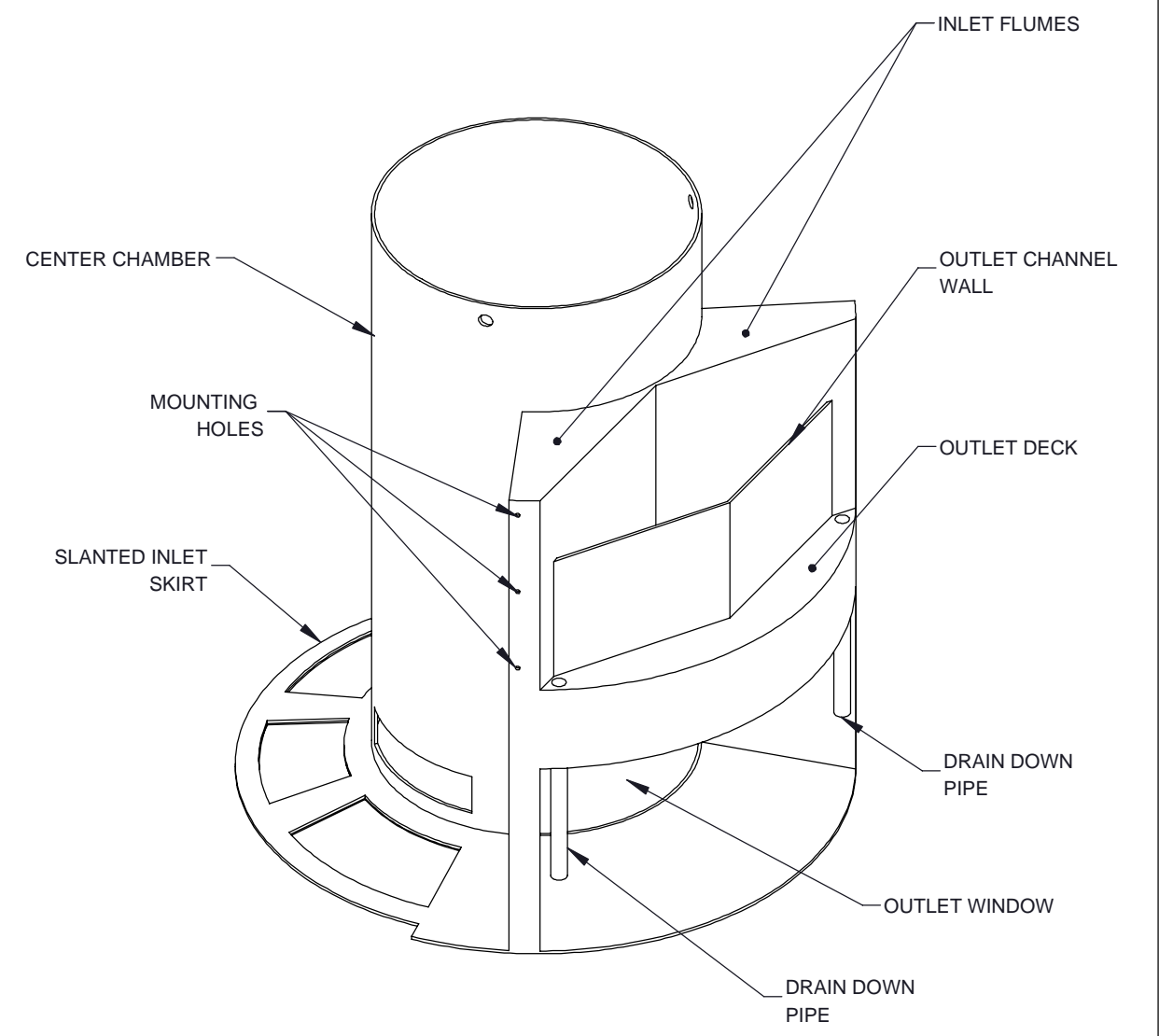
PLAN VIEW



ELEVATION VIEW



ELEVATION VIEW: OUTLET SIDE



ISOMETRIC VIEW

NOTES:
1. SEE CASCADE SEPARATOR INSTALLATION GUIDE FOR ADDITIONAL INFORMATION

The design and information shown on this drawing is provided as a service to the project owner, engineer and contractor by Contech Engineered Solutions LLC, or one of its affiliated companies ("Contech"). Neither this drawing, nor any part thereof, may be used, reproduced or modified in any manner without the prior written consent of Contech. Failure to comply is done at the user's own risk and Contech expressly disclaims any liability or responsibility for such use.

If discrepancies between the supplied information upon which the drawing is based and actual field conditions are encountered as site work progresses, these discrepancies must be reported to Contech immediately for re-evaluation of the design. Contech accepts no liability for designs based on missing, incomplete or inaccurate information supplied by others.



CONTECH
ENGINEERED SOLUTIONS LLC
www.ContechES.com
9025 Centre Pointe Dr., Suite 400, West Chester, OH 45069
800-338-1122 513-645-7000 513-645-7993 FAX

REFERENCE DETAIL
INTERNALS CS-6
CASCADE SEPARATOR

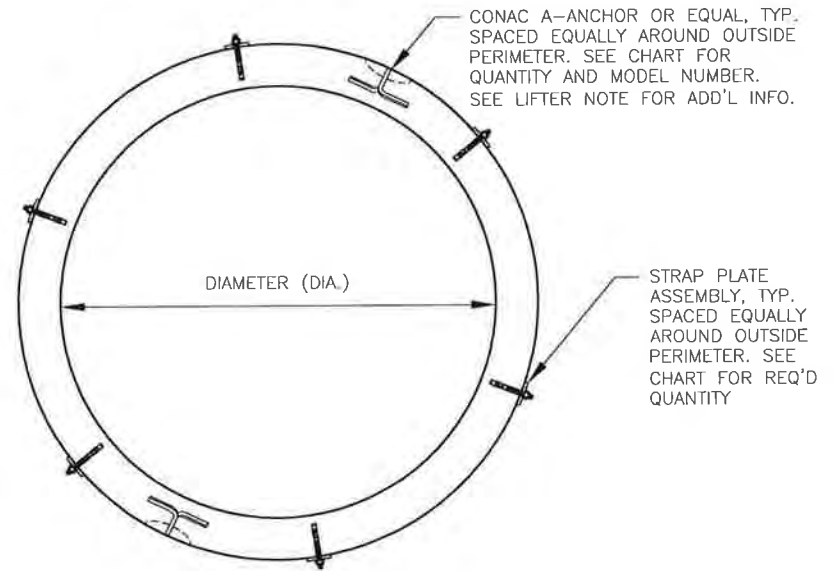
THIRD ANGLE PROJECTION

UNLESS OTHERWISE SPECIFIED
DIMENSIONS ARE IN INCHES

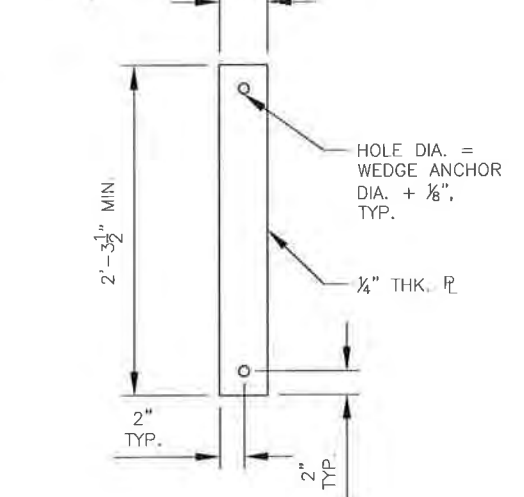
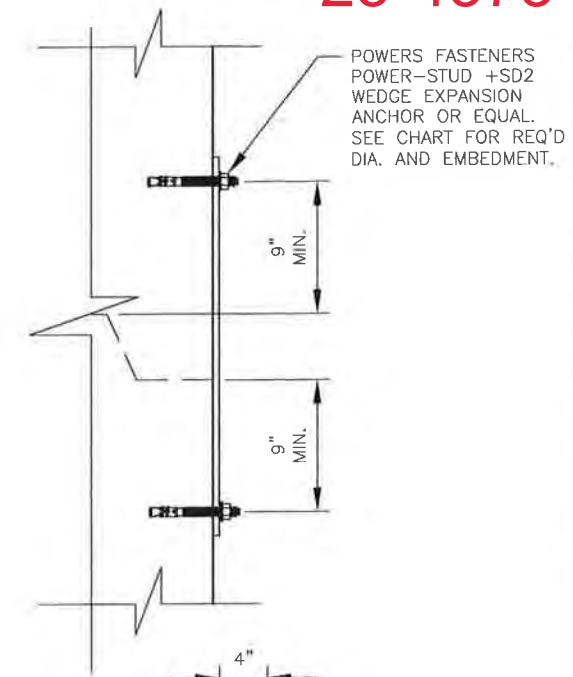
TOLERANCES:
FRACTIONAL ± 1/16
ANGLES ± 1 DEGREE
TWO PLACE DECIMAL ± 0.06
THREE PLACE DECIMAL ± 0.030

PART NUMBER: 325-003951	
APPROVED BY: M. BROOKS	DRAWN BY: J. BELL
APPROVED BY DATE: 2021.10.21	DRAWN BY DATE: 2021.09.15
SCALE: N/A	REV: B
SHEET 1 OF 1	

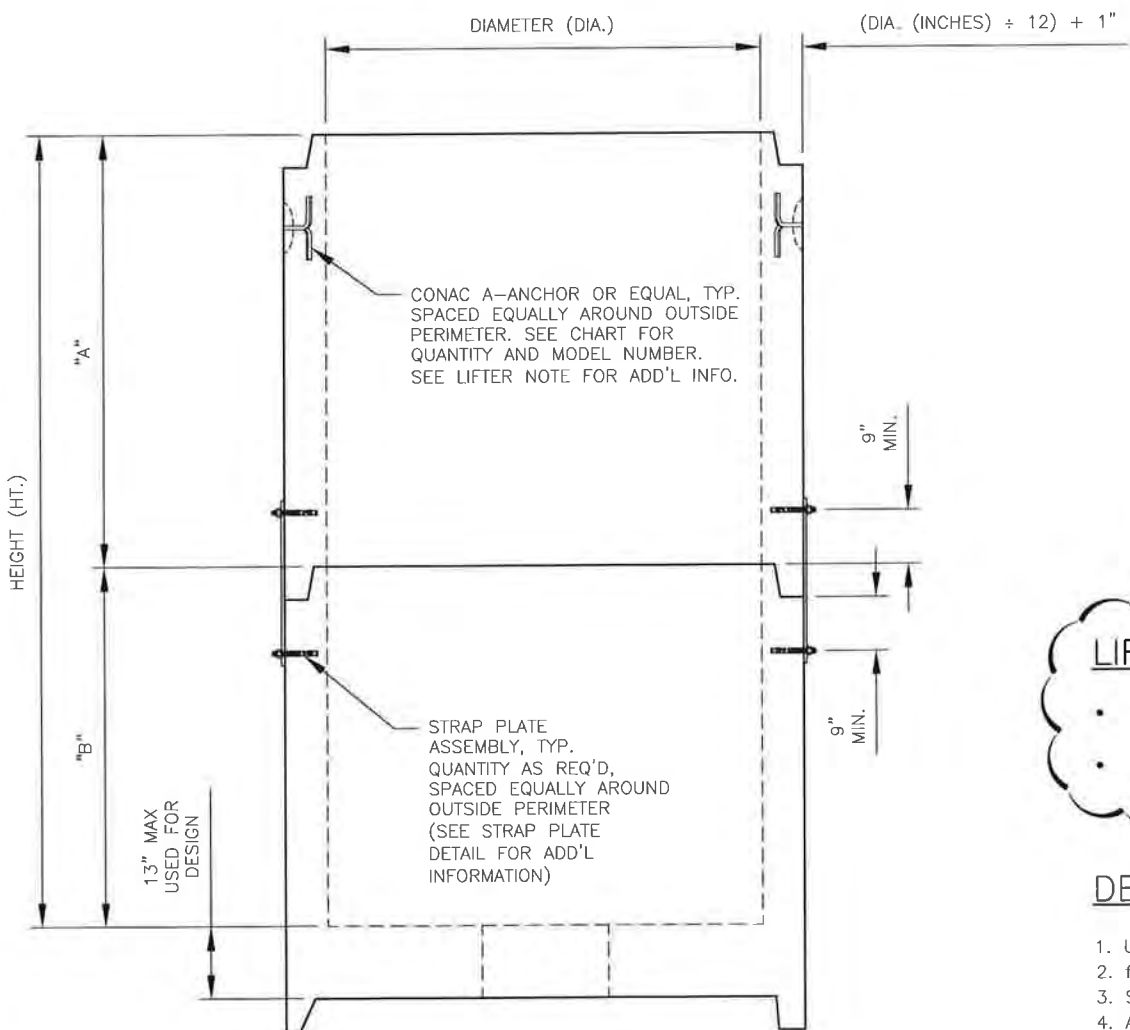
25-4373 - 855355 CAMP GROUND ROAD PHASE 1



PLAN VIEW



STRAP PLATE DETAIL



ELEVATION VIEW

CDS MH Dia.	Ht. (ft.)	A (ft.)	B (ft.)	Number of Connection Plates Req'd (equally spaced)	POWERS FASTENERS POWER-STUD +SD2 WEDGE EXPANSION ANCHOR OR EQUAL.	Number of Lifters Req'd (equally spaced)	Conac A-Anchor (or Equal)
4'	5'	1'	4'	4	1/2"Ø - w/ 2 1/2" Min. Embed	2	Model 4CA14
		2'	3'	3	1/2"Ø - w/ 2 1/2" Min. Embed	2	Model 4CA14
		3'	2'	3	1/2"Ø - w/ 2 1/2" Min. Embed	2	Model 4CA14
		4'	1'	2	1/2"Ø - w/ 2 1/2" Min. Embed	2	Model 4CA14
5'	6'	5'	0'	0	1/2"Ø - w/ 2 1/2" Min. Embed	2	Model 4CA14
		1'	5'	3	5/8"Ø - w/ 3 7/8" Min Embed	2	Model 6CA14
		2'	4'	3	5/8"Ø - w/ 3 7/8" Min. Embed	2	Model 6CA14
		3'	3'	2	5/8"Ø - w/ 3 7/8" Min. Embed	2	Model 6CA14
		4'	2'	2	5/8"Ø - w/ 3 7/8" Min Embed	2	Model 6CA14
6'	7'	5'	1'	2	5/8"Ø - w/ 3 7/8" Min. Embed	2	Model 6CA14
		6'	0'	0	5/8"Ø - w/ 3 7/8" Min. Embed	2	Model 6CA14
		1'	6'	4	3/4"Ø - w/ 4 1/2" Min. Embed	2	Model 6CA14
		2'	5'	3	3/4"Ø - w/ 4 1/2" Min. Embed	2	Model 6CA14
		3'	4'	3	3/4"Ø - w/ 4 1/2" Min. Embed	2	Model 6CA14
		4'	3'	3	3/4"Ø - w/ 4 1/2" Min. Embed	2	Model 6CA14
7'	7'	5'	2'	2	3/4"Ø - w/ 4 1/2" Min. Embed	2	Model 6CA14
		6'	1'	2	3/4"Ø - w/ 4 1/2" Min. Embed	2	Model 6CA14
		7'	0'	0	3/4"Ø - w/ 4 1/2" Min. Embed	2	Model 6CA14
		1'	6'	5	3/4"Ø - w/ 4 1/2" Min. Embed	2	Model 8CA18
		2'	5'	4	3/4"Ø - w/ 4 1/2" Min. Embed	2	Model 8CA18
		3'	4'	4	3/4"Ø - w/ 4 1/2" Min. Embed	2	Model 8CA18
		4'	3'	3	3/4"Ø - w/ 4 1/2" Min. Embed	2	Model 8CA18
8'	9'	5'	2'	3	3/4"Ø - w/ 4 1/2" Min. Embed	2	Model 8CA18
		6'	1'	2	3/4"Ø - w/ 4 1/2" Min. Embed	2	Model 8CA18
		7'	0'	0	3/4"Ø - w/ 4 1/2" Min. Embed	2	Model 8CA18
		1'	8'	7	3/4"Ø - w/ 4 1/2" Min Embed	2	Model 8CA18
		2'	7'	6	3/4"Ø - w/ 4 1/2" Min. Embed	2	Model 8CA18
		3'	6'	6	3/4"Ø - w/ 4 1/2" Min. Embed	2	Model 8CA18
		4'	5'	5	3/4"Ø - w/ 4 1/2" Min. Embed	2	Model 8CA18
		5'	4'	5	3/4"Ø - w/ 4 1/2" Min. Embed	2	Model 8CA18
6'	3'	4	3/4"Ø - w/ 4 1/2" Min. Embed	2	Model 8CA18		
7'	2'	4	3/4"Ø - w/ 4 1/2" Min. Embed	2	Model 8CA18		
8'	1'	3	3/4"Ø - w/ 4 1/2" Min. Embed	2	Model 8CA18		

LIFTER NOTE:

- FOR ALL UNITS w/DIA. < 8'-0", DO NOT PLACE LIFTERS IN UPPER RISER WHEN "A" < 2'-0".
- FOR DIAMETER = 8'-0", DO NOT PLACE LIFTERS IN UPPER RISER WHEN "A" < 3'-0".

DESIGN NOTES

1. UNIT WEIGHT OF CONCRETE = 150 PCF
2. f'c @ LIFTING = 4,000 PSI MIN.
3. STEEL STRAP PLATES: ASTM A36 MIN.
4. ALL HARDWARE TO BE INSTALLED PER MANUFACTURER'S SPECIFICATIONS.

 860 HOOPER ROAD, ENDWELL, NY 13760 TEL: (607) 231-6600 FAX: (607) 231-6650		PREPARED FOR:
REV. NO. DATE REVISION	DATE: 9/24/15 SHEET TITLE: LIFTING DETAILS	DRWN BY: GAS CKD BY: GJP
PREPARED BY:	SCALE: N.T.S.	PROJECT: CDS UNIT LIFTING
CONTRACTOR:	DWG. I.D. RS-01	SHT. NO. 1 OF 1
DELTA PROJ. NO.: 2015.025.041		