

Job Name: 25-4339 - Foxborough Storm Phase 2  
 Job Location: Elizabethtown, KY  
 Contractor: Dirt Works Unlimited, LLC.

Plant: 100

12/19/2025 8:48:50 AM

Tech: J. Horsley - F

PC: C. Goff



**Structure ID: JB 3**

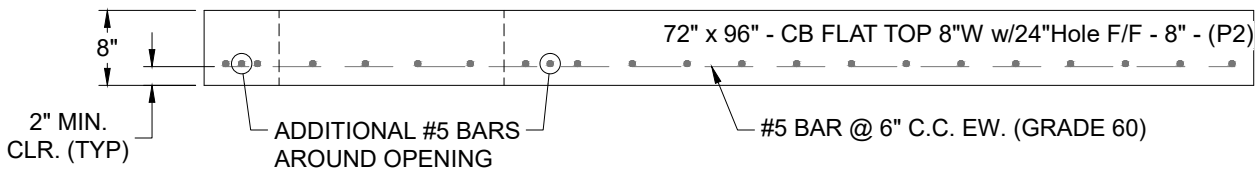
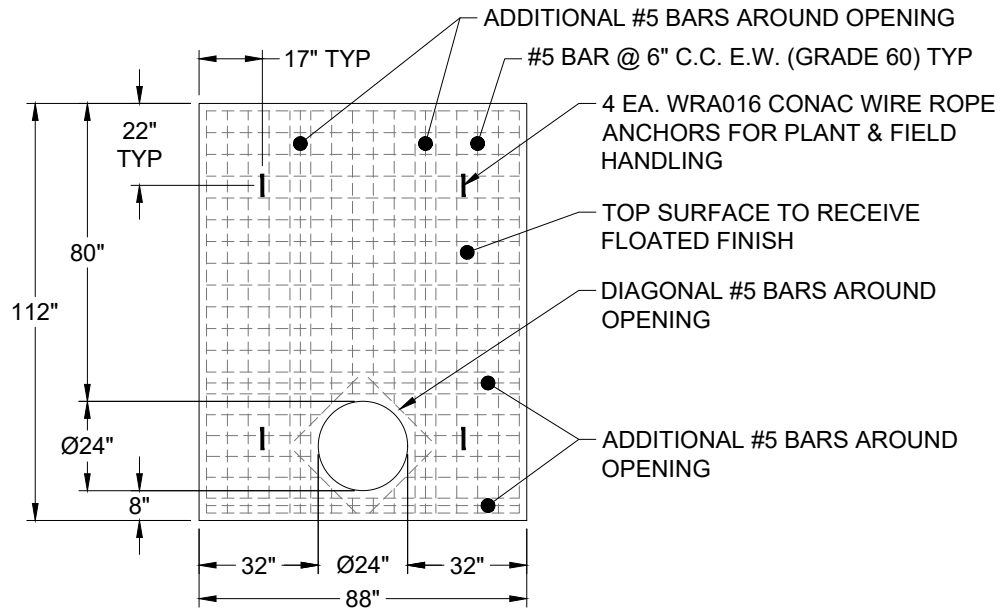
**P2 BX072096-08LD08-24**

**CB FLAT TOP 8"W w/24"Hole F/F**

- P3) 24" - CASTING HEIGHT - 7"
- P2) 72" x 96" - CB FLAT TOP 8"W w/24"Hole F/F - 8"
- P1) 72" x 96" - BOX BASE 8inW, 10inF, Variable Ht F/n - 38"
- 1) SECONDARY POUR
- 1) CASTING - HOE MC-315 F/C Storm
- 1) 72" x 96" - Conseal CS-102 1.00"
- 2) DOGHOUSE INVRTD - 58"x40"
- 1) Hole - 10
- 1) Hole - 48 x 34

	0 lb
	6313 lb
	13074 lb
	0 lb
	258 lb
	0 lb
	0 lb
	0 lb
	0 lb
Structure Total:	19645 lb

- Structure Notes:**
1. PER ASTM C-913 SPECIFICATIONS
  2. CONCRETE: 4,000 PSI AT 28 DAYS
  3. REINFORCEMENT: #5 BAR @ 6" C.C. E.W. (GRADE 60) - 2" MIN. REBAR CLEARANCE (TYP)
  4. NO STEPS
  5. NO INVERT CHANNEL
  6. CASTING BY ICAST (HOE MC-315 FRAME & COVER "STORM")
  7. LIFTERS: 4 EA. WRA016 CONAC WIRE ROPE ANCHORS FOR PLANT & FIELD HANDLING



Coating (Int): Coating (Ext):	Seam Up: Flat Seam Dn: Flat	Wall Thickness: 8"	Height (Ext): 8"	Weight (Net): 6313 lb Volume (Net): 1.61cu.yd
----------------------------------	--------------------------------	--------------------	------------------	--