



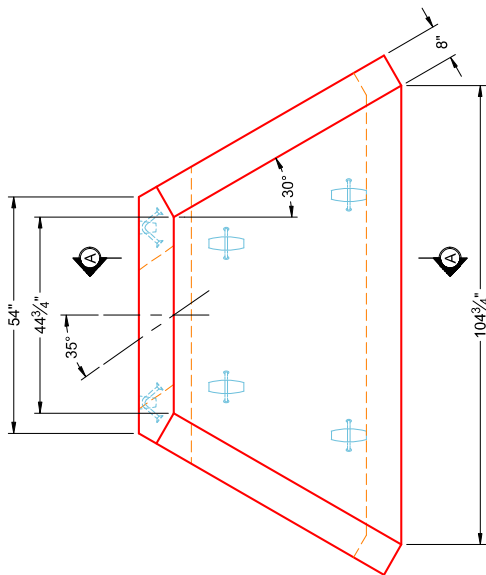
Structure ID: HW 6

P1 HWPCCUS

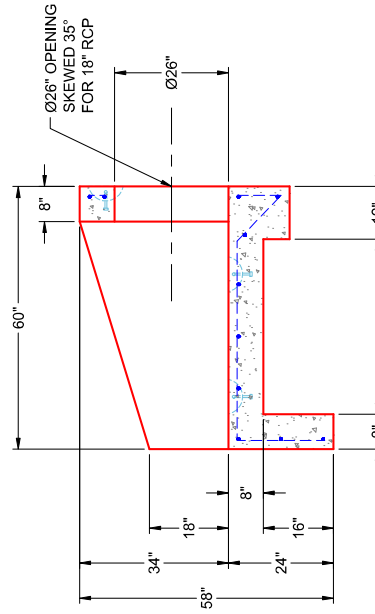
30" - PIPE CULVERT HEADWALL CUSTOM F/F

GENERAL NOTES:

1. CONCRETE: 5,000 PSI AT 28 DAYS
2. REINFORCING: #5 BAR @ 12" C.C. E.W. (GRADE 60) - 2" REBAR CLEARANCE (MIN.)
3. REINFORCING BARS TO BE TACK WELDED OR TIED
4. PIPE AND LIFTING ANCHOR POCKETS TO BE GROUTED WITH NON-SHRINK GROUT
5. 3/4" CHAMFER ON ALL EXPOSED EDGES
6. WEIGHT: 7,970 LBS

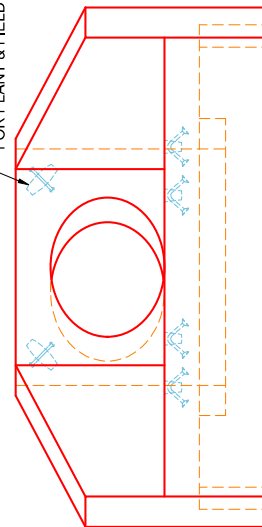


PLAN VIEW



SECTION A-A

"A-ANCHOR" LIFTING SYSTEM FOR PLANT & FIELD HANDLING



FRONT VIEW

SUBMITTAL DRAWING: 30" PC HW FOR 18" PIPE - 35° SKEW	
CUSTOMER: DIRT WORKS UNLIMITED, LLC	
PROJECT: FOXBOROUGH STORM PHASE 2	
STRUCTURE: HW 6	
QUOTE/SALES ORDER NO: 25-4339	
CHECKED BY: B. SMITH	DRAWN BY: K. CARDWELL
DATE: 12/18/25	SCALE: NTS PG. 1 OF 1



REVISION INFORMATION

REV. DATE: NO REVISIONS TO DATE