



Structure ID: HW 1

P1 HWPC2945D

45" x 29" - PIPE CULVERT HEADWALL w/DISS (ELL.RCP) F/F

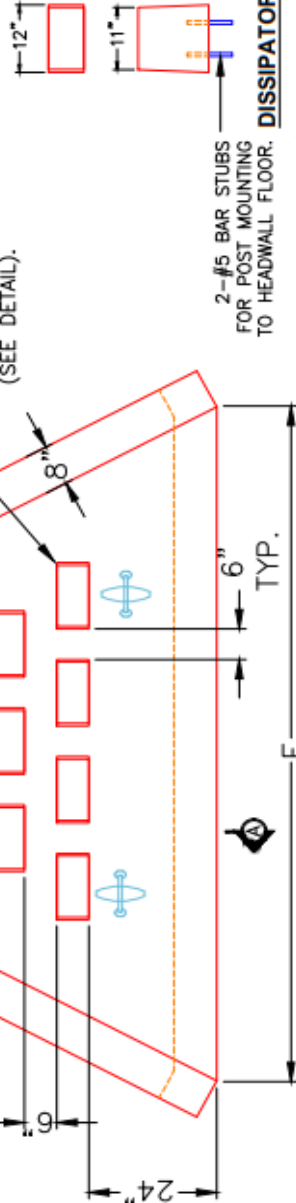
DIMENSIONS

PIPE Ø	A	B	C	D	E	F	G	WEIGHT
29" X 45"	6'-0"	5'-11"	3'-11"	2'-0"	6'-2"	11'-0"	4'-10"	12,581 LBS

GENERAL NOTES:

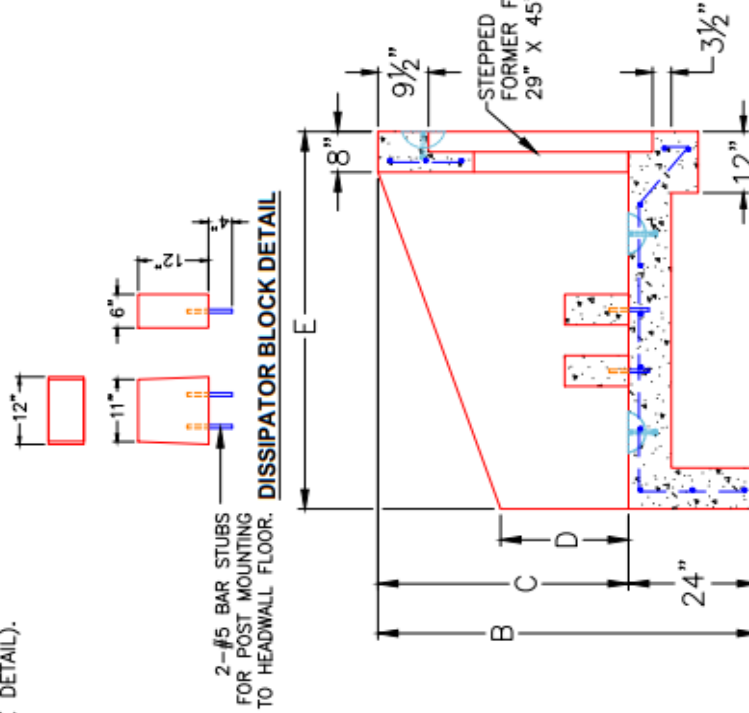
1. MANUFACTURED TO ASTM C-913 (LATEST REVISION).
2. CONCRETE: 5,000 PSI OR GREATER AT 28 DAYS.
3. REINFORCING: #5 BAR @ 12" C/C E.W. (GRADE 60).
4. WEIGHT: 12,581 LBS.
5. CONTRACTOR TO VERIFY ALL DIMENSIONS BEFORE MANUFACTURE.
6. ALL LIFT POINTS AND PIPE OPENINGS TO BE GROUTED BY CONTRACTOR.

7 EA. 12"x12"x6" ENERGY DISSIPATOR BLOCKS MOUNTED ON FLOOR OF HEADWALL (SEE DETAIL).

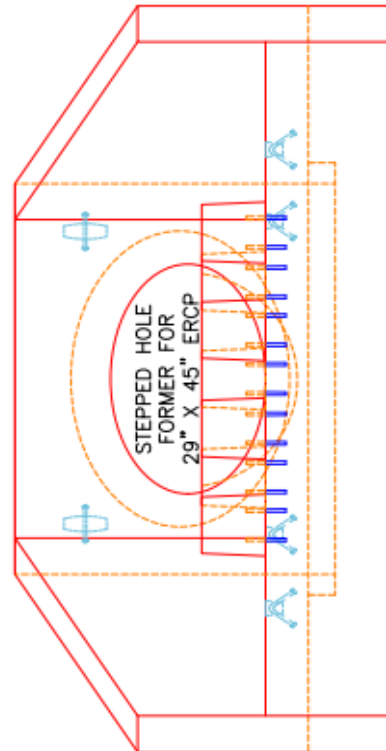


PLAN VIEW

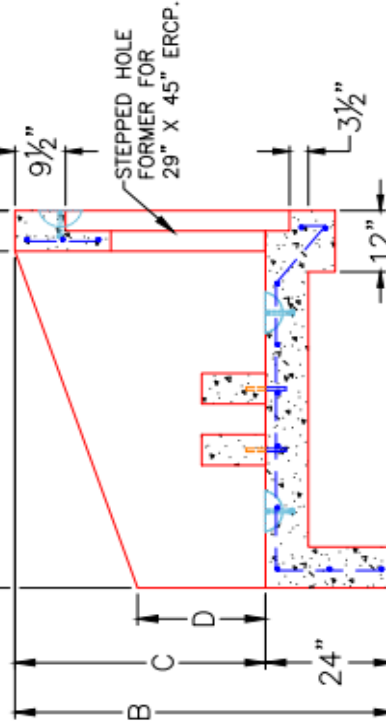
DISSIPATOR BLOCK DETAIL



FRONT ELEVATION



SECTION A-A



REV.	DATE	NO REVISIONS TO DATE

SUBMITTAL DRAWING: 29" X 45" PC HW W/ DISS.
CUSTOMER: DIRT WORKS UNLIMITED, LLC.
PROJECT: FOXBOROUGH STORM PHASE 2
STRUCTURE: 8-54339
QUOTE/SALES ORDER NO: 25-4339
PC: C. GOFF
DATE: 12/11/25
DRAWN BY: J. COPPAGE
SCALE: NTS
PG. 1 of 1



THIS DRAWING IS THE PROPERTY OF INFRASTRUCTURE PRECAST, INC. ANY USE OR DUPLICATION OF THIS DRAWING WITHOUT PRIOR AUTHORIZATION IS STRICTLY PROHIBITED.