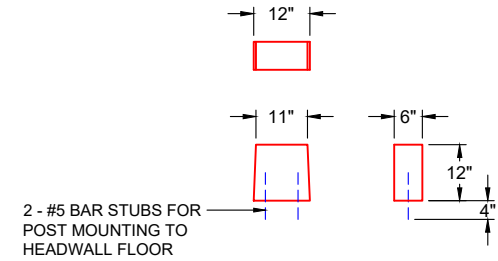


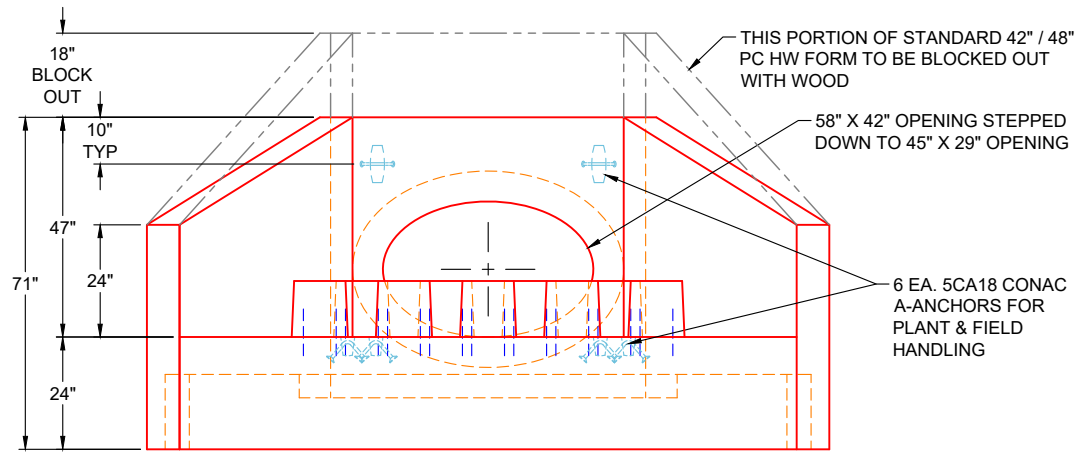
**PLAN VIEW**

**GENERAL NOTES:**

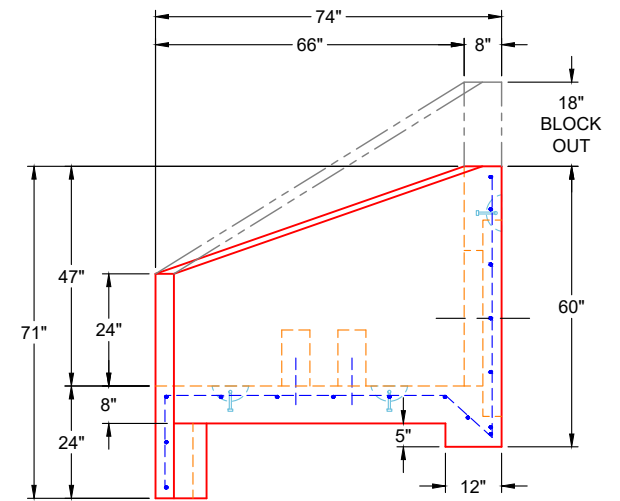
1. MANUFACTURED PER ASTM C-913 (LATEST REVISION) SPECIFICATIONS
2. CONCRETE: 5,000 PSI AT 28 DAYS
3. REINFORCEMENT: #5 BAR @ 12" C.C. E.W. (GRADE 60) - 2" MIN. REBAR CLEARANCE (TYP)
4. WEIGHT: 12,581 LBS
5. USE STANDARD 42" / 48" PIPE CULVERT HEADWALL FORM



**DISSIPATOR BLOCK DETAIL**



**FRONT VIEW**



**SIDE VIEW**

**PRODUCTION WORK ORDER**

PRODUCT I.D.: HWPC2945D

DESCRIPTION: 29" X 45" HERCP PIPE CULVERT HW W/ DISSIPATORS



**QUALITY CONTROL CHECKLIST**

- ALL DIMENSIONS CORRECT.
- LIFTERS INSTALLED.
- OPENING CENTERED.
- REINFORCING CORRECT.
- SURFACE QUALITY ACCEPTABLE.
- EDGES CHAMFERED.
- ALL PATCHWORK ACCEPTABLE.

PRODUCT VIEW: RIGHT SIDE UP

CUSTOMER: DIRT WORKS UNLIMITED, LLC

PLANT: BEAVER DAM, KY

PROJECT: FOXBOROUGH STORM PHASE 2

WEIGHT: 12,581 LBS

STRUCTURE: HW 1

TOP SECTION JOINT: N / A

ORDER NO: 25-4339

BASE SECTION JOINT: N / A

PE: J.H. ROSS

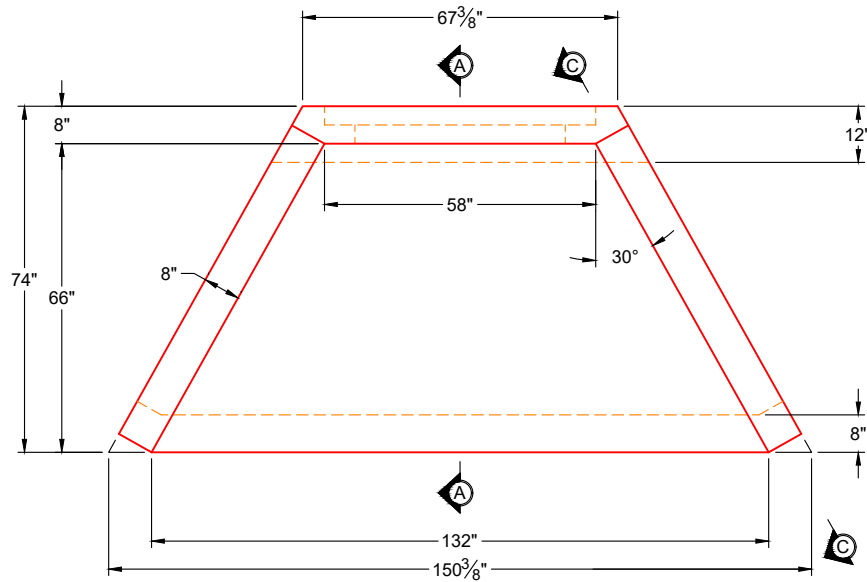
DRAWING: K. CARDWELL

QC CHECK INITIALS:

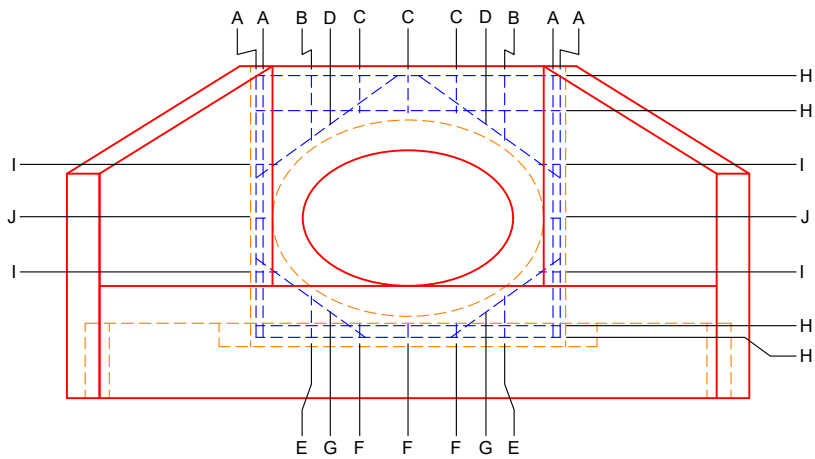
DATE: 12/19/25

SCALE: NTS

PG. 1 OF 4



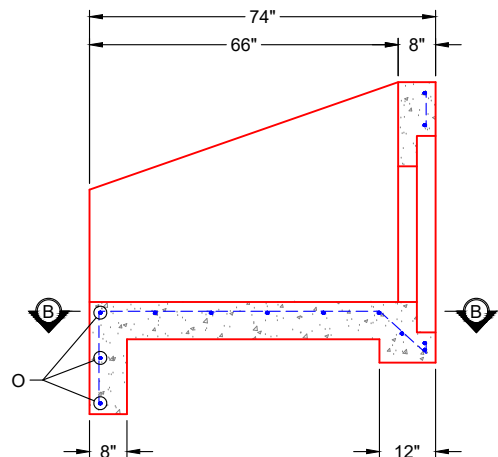
**PLAN VIEW**




**FRONT VIEW**

**GENERAL NOTES:**

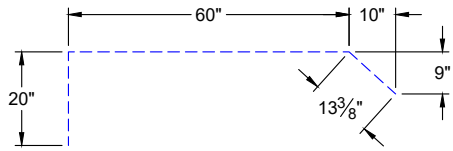
1. MANUFACTURED PER ASTM C-913 (LATEST REVISION) SPECIFICATIONS
2. CONCRETE: 5,000 PSI AT 28 DAYS
3. REINFORCEMENT: SEE SHEETS 2, 3, & 4 FOR REBAR INFORMATION - MIN. 2" REBAR CLEARANCE (TYP)
4. WEIGHT: 12,050 LBS



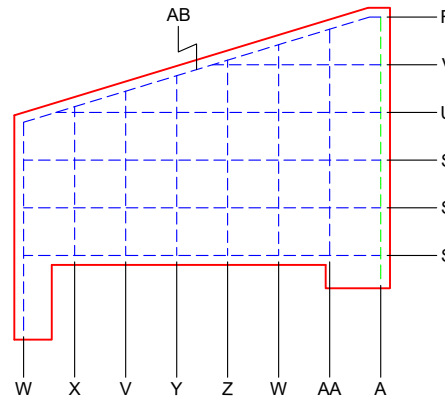
**SECTION A-A**

<b>PRODUCTION WORK ORDER</b>		PRODUCT I.D.: HWPC2945D	DESCRIPTION: 29" X 45" HERCP PIPE CULVERT HW W/ DISS - REBAR LAYOUT		
	<b>QUALITY CONTROL CHECKLIST</b> <input type="checkbox"/> ALL DIMENSIONS CORRECT. <input type="checkbox"/> LIFTERS INSTALLED. <input type="checkbox"/> OPENING CENTERED. <input type="checkbox"/> REINFORCING CORRECT. <input type="checkbox"/> SURFACE QUALITY ACCEPTABLE. <input type="checkbox"/> EDGES CHAMFERED. <input type="checkbox"/> ALL PATCHWORK ACCEPTABLE.	PRODUCT VIEW: RIGHT SIDE UP	CUSTOMER: DIRT WORKS UNLIMITED, LLC		
		PLANT: BEAVER DAM, KY	PROJECT: FOXBOROUGH STORM PHASE 2		
		WEIGHT: 12,581 LBS	STRUCTURE: HW 1		
		TOP SECTION JOINT: N / A	ORDER NO: 25-4339		
		BASE SECTION JOINT: N / A	PE: J.H. ROSS	DRAWING: K. CARDWELL	
		QC CHECK INITIALS:	DATE: 12/19/25	SCALE: NTS	PG. 2 OF 4

THIS DRAWING IS THE PROPERTY OF INFRASTRUCTURE PRECAST, INC. ANY USE OR DUPLICATION OF THIS DRAWING WITHOUT PRIOR AUTHORIZATION IS STRICTLY PROHIBITED.



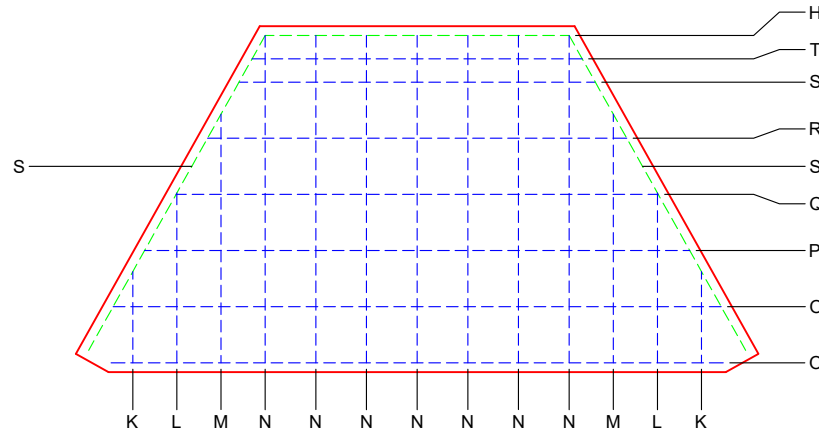
**PART: N**  
 #5 REBAR (GRADE 60)  
 TOTAL LENGTH: 93 1/2"  
 (7) REQUIRED



**SECTION C-C**

**GENERAL NOTES:**

1. MANUFACTURED PER ASTM C-913 (LATEST REVISION) SPECIFICATIONS
2. CONCRETE: 5,000 PSI AT 28 DAYS
3. REINFORCEMENT: SEE SHEETS 2, 3, & 4 FOR REBAR INFORMATION - MIN. 2" REBAR CLEARANCE (TYP)
4. WEIGHT: 12,050 LBS



**SECTION B-B**

**PRODUCTION WORK ORDER**

PRODUCT I.D.: HWPC2945D

DESCRIPTION: 29" X 45" HERCP PIPE CULVERT HW W/ DISS - REBAR LAYOUT



**QUALITY CONTROL CHECKLIST**

- ALL DIMENSIONS CORRECT.
- LIFTERS INSTALLED.
- OPENING CENTERED.
- REINFORCING CORRECT.
- SURFACE QUALITY ACCEPTABLE.
- EDGES CHAMFERED.
- ALL PATCHWORK ACCEPTABLE.

PRODUCT VIEW: RIGHT SIDE UP

CUSTOMER: DIRT WORKS UNLIMITED, LLC

PLANT: BEAVER DAM, KY

PROJECT: FOXBOROUGH STORM PHASE 2

WEIGHT: 12,581 LBS

STRUCTURE: HW 1

TOP SECTION JOINT: N / A

ORDER NO: 25-4339

BASE SECTION JOINT: N / A

PE: J.H. ROSS

DRAWING: K. CARDWELL

QC CHECK INITIALS:


DATE: 12/19/25

SCALE: NTS

PG. 3 OF 4

ITEM	LENGTH	SIZE	QTY.
A	56"	#5	4
B	14"	#5	2
C	8"	#5	3
D	38"	#5	2
E	9"	#5	2
F	3"	#5	5
G	29"	#5	2
H	65"	#5	4
I	5"	#5	4
J	2"	#5	2
K	20"	#5	2
L	37"	#5	2
M	54"	#5	2
N	SEE DETAIL	#5	7

ITEM	LENGTH	SIZE	QTY.
O	131"	#5	4
P	117"	#5	1
Q	104"	#5	1
R	90"	#5	1
S	77"	#5	7
T	71"	#5	1
U	70"	#5	2
V	36"	#5	4
W	45"	#5	2
X	32"	#5	4
Y	39"	#5	2
Z	42"	#5	2
AA	49"	#5	2
AB	78"	#5	2

PRODUCTION WORK ORDER		PRODUCT I.D.: HWPC2945D	DESCRIPTION: 29" X 45" HERCP PIPE CULVERT HW W/ DISS. REBAR CUTSHEET		
	<b>QUALITY CONTROL CHECKLIST</b> <input type="checkbox"/> ALL DIMENSIONS CORRECT. <input type="checkbox"/> LIFTERS INSTALLED. <input type="checkbox"/> OPENING CENTERED. <input type="checkbox"/> REINFORCING CORRECT. <input type="checkbox"/> SURFACE QUALITY ACCEPTABLE. <input type="checkbox"/> EDGES CHAMFERED. <input type="checkbox"/> ALL PATCHWORK ACCEPTABLE.	PRODUCT VIEW: RIGHT SIDE UP	CUSTOMER: DIRT WORKS UNLIMITED, LLC		
		PLANT: BEAVER DAM, KY	PROJECT: FOXBOROUGH STORM PHASE 2		
		WEIGHT: 12,581 LBS	STRUCTURE: HW 1		
		TOP SECTION JOINT: N / A	ORDER NO: 25-4339		
		BASE SECTION JOINT: N / A	PE: J.H. ROSS	DRAWING: K. CARDWELL	
		QC CHECK INITIALS:	DATE: 12/19/25	SCALE: NTS	PG. 4 OF 4