

Job Name: 25-4339 - Foxborough Storm Phase 2  
 Job Location: Elizabethtown, KY  
 Contractor: Dirt Works Unlimited, LLC.

Plant: 100

12/19/2025 8:48:50 AM

Tech: J. Horsley - F

PC: C. Goff



**Structure ID: DBI 4**

**P2 BX048096-08LD08S**

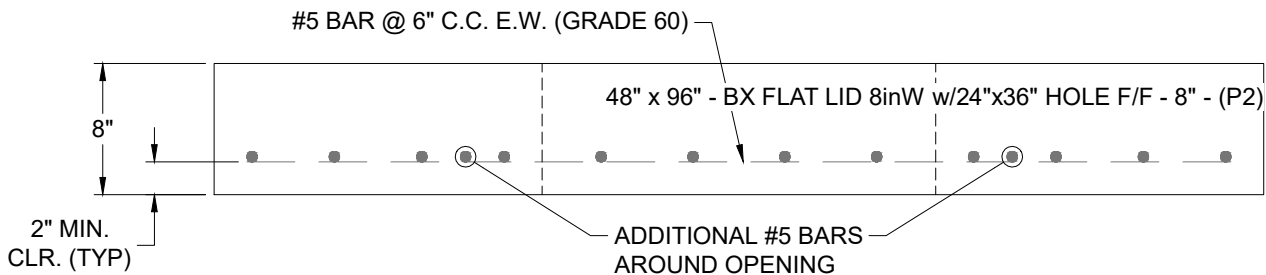
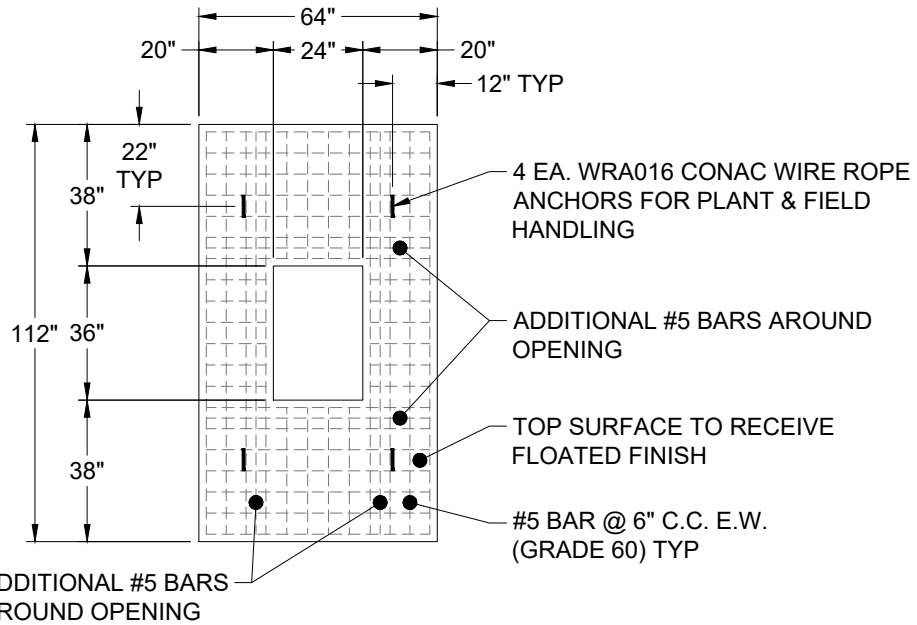
**BX FLAT LID 8inW w/24"x36" HOLE F/F**

- P3) 24" x 36" - CASTING HEIGHT - 4"
- P2) 48" x 96" - BX FLAT LID 8inW w/24"x36" HOLE F/F - 8"
- P1) 48" x 96" - BOX BASE 8inW, 10inF, Variable Ht F/n - 25"
- 1) SECONDARY POUR
- 1) CASTING - HOE 518 F/G
- 1) 48" x 96" - Conseal CS-102 1.00"
- 1) 24" x 36" - Conseal CS-102 1.00"
- 1) DOGHOUSE INVRTD - 58"x27"
- 1) DOGHOUSE INVRTD - 26"x14"
- 1) DOGHOUSE INVRTD - 48"x27"
- 1) DOGHOUSE INVRTD - 26"x15"

- 0 lb
- 4232 lb
- 8672 lb
- 0 lb
- 354 lb
- 0 lb
- 0 lb
- 0 lb
- 0 lb
- 0 lb
- 0 lb
- 0 lb

- Structure Notes:**
1. PER ASTM C-913 SPECIFICATIONS
  2. CONCRETE: 4,000 PSI AT 28 DAYS
  3. REINFORCEMENT: #5 BAR @ 6" C.C. E.W. (GRADE 60) - 2" MIN. REBAR CLEARANCE (TYP)
  4. NO STEPS
  5. NO INVERT CHANNEL
  6. CASTING BY ICAST (HOE 518 FRAME & GRATE)
  7. LIFTERS: 4 EA. WRA016 CONAC WIRE ROPE ANCHORS FOR PLANT & FIELD HANDLING

Structure Total: 13258 lb



Coating (Int): Coating (Ext):	Seam Up: Flat Seam Dn: Flat	Wall Thickness: 8"	Height (Ext): 8"	Weight (Net): 4232 lb Volume (Net): 1.08cu.yd
----------------------------------	--------------------------------	--------------------	------------------	--