



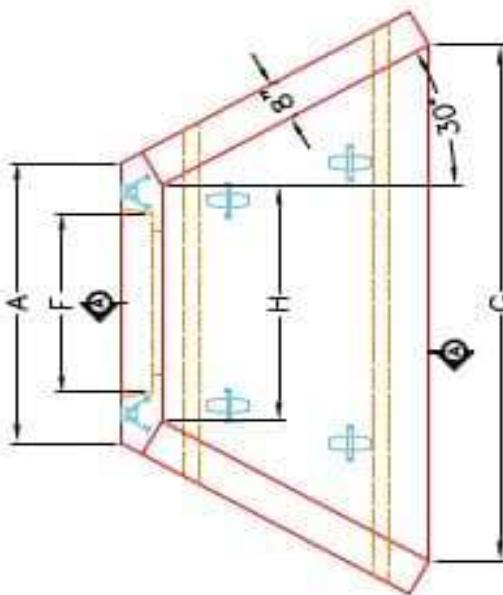
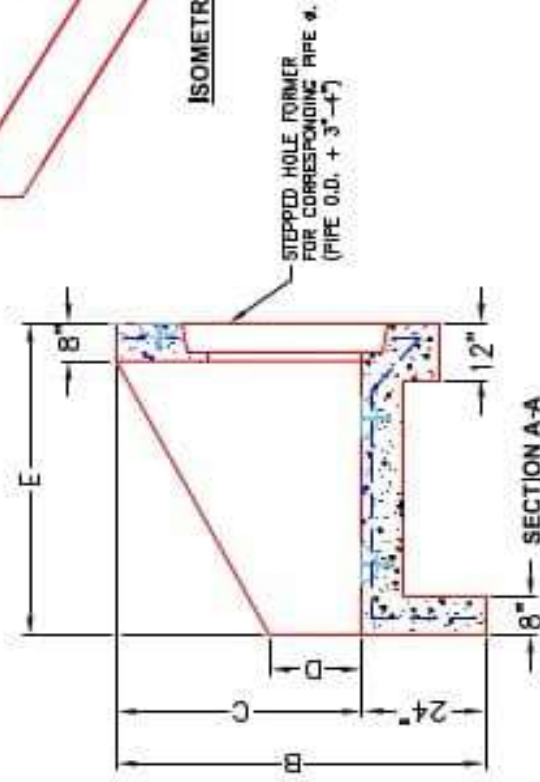
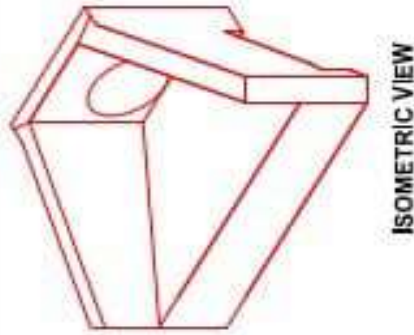
Structure ID: PIPE 6 HW

P1 HWPC36

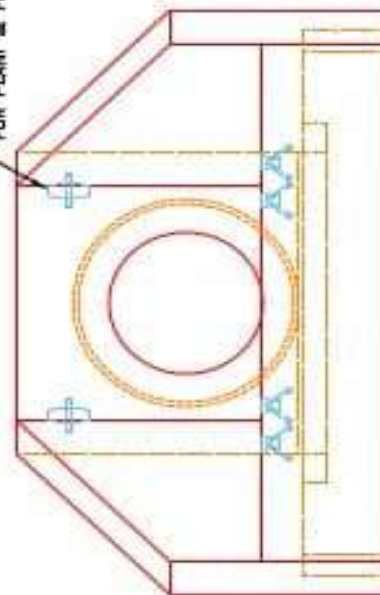
36" - PIPE CULVERT HEADWALL F/F

DIMENSIONS

PIPE #	A	B	C	D	E	F	G	H	WEIGHT
36"	1'-0"	6'-0"	1'-0"	1'-0"	5'-0"	1'-0"	1'-0"	3'-0"	1400 lbs.
36"	1'-0"	6'-0"	1'-0"	1'-0"	5'-0"	1'-0"	1'-0"	3'-0"	1400 lbs.
48"	6'-0"	6'-0"	5'-0"	2'-0"	6'-0"	6'-0"	11'-0"	11'-0"	11200 lbs.
48"	6'-0"	6'-0"	5'-0"	2'-0"	6'-0"	5'-0"	11'-0"	11'-0"	11200 lbs.
60"	7'-0"	7'-0"	6'-0"	2'-0"	7'-0"	3'-0"	10'-0"	6'-0"	10400 lbs.
60"	7'-0"	7'-0"	6'-0"	2'-0"	7'-0"	3'-0"	10'-0"	6'-0"	10400 lbs.



3'-0" AND/OR LIFTING SYSTEM FOR PLANT & FIELD HANDLING.



APPROVED FOR DESIGN ONLY

APPROVED
 1/20/2021 9:50 AM
 KYTC DIV. OF CONSTRUCTION

INSTRUCTION

INFRASTRUCTURE PRECAST, INC.
 601 WEST 17TH ST., MANASSAS, VA 20108
 PHONE: (703) 336-2266, FAX: (703) 336-2681

KYTC 30"-60" PIPE CULVERT HEADWALL

ISSUED FOR PERMIT	DATE
ISSUED BY	DATE
DESIGNED BY	DATE
CHECKED BY	DATE
SCALE	AS SHOWN

- NOTES:**
1. CONCRETE: KYTC APPROVED.
 2. REINFORCING: #5 BAR @ 12" C/C E.W. - GRADE 60, (WITH 2" CONCRETE COVER MINIMUM)
 3. REINFORCING BARS TO BE TACK WELDED OR TIED.
 4. PIPE AND LIFTING ANCHOR POCKETS TO BE GROUTED WITH KYTC APPROVED NON-SHRINK GROUT.
 5. DRAWING TO BE USED IN CONJUNCTION WITH KYTC STD. DRAWING RDH-110-02, RDH-210-03 AND THE STANDARD SPECIFICATIONS FOR ROAD AND BRIDGE CONSTRUCTION.
 6. 3" CHAMFER ON ALL EXPOSED EDGES.
 7. PREFORMED STEPPED HOLE SIZED AS PER O.D. OF PIPE + 3'-4'.