

Job Name: 25-4337 - Maywood Phase13 Job Location: Bardstown, KY Contractor: Buzick Construction	Plant: 100 12/9/2025 11:21:41 AM	Tech: J. Horsley - F PC: C. Goff	
---	-------------------------------------	-------------------------------------	--

Structure ID: CI11

P1 BX2436-08BVF

BOX BASE 8inW, 8inF, Variable Ht F/n

P2) 24" x 36" - CASTING HEIGHT - 6"
P1) 24" x 36" - BOX BASE 8inW, 8inF, Variable Ht F/n - 30"
1) 24" x 36" - Conseal CS-102 1.00"
1) Hole - 26

0 lb
4101 lb
0 lb
0 lb

Structure Total: 4101 lb

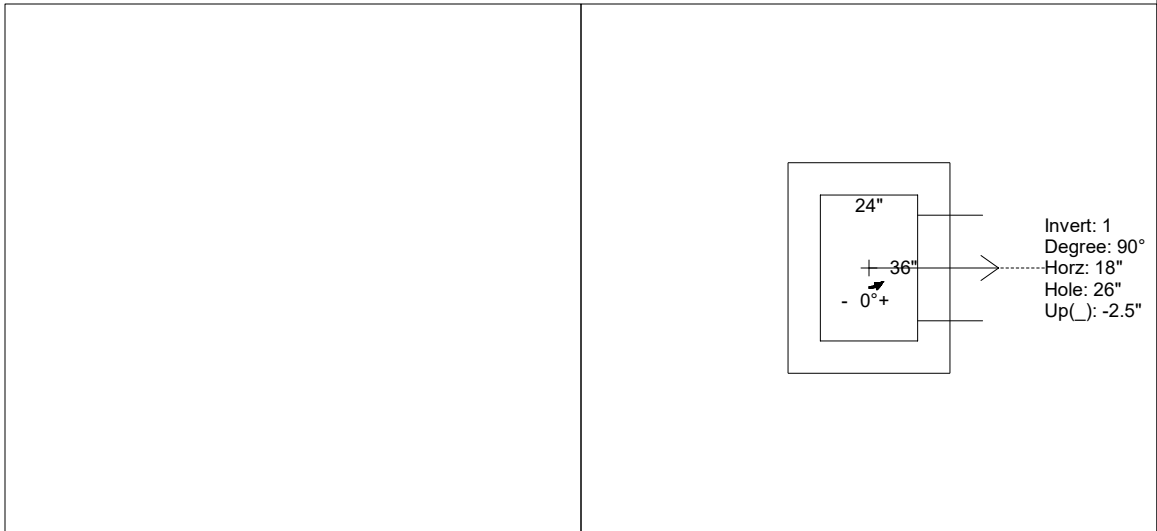
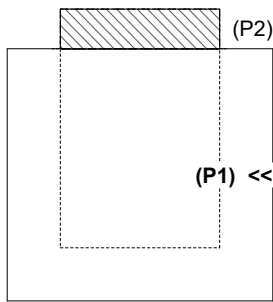
Structure Notes:
1. PER ASTM C-913 SPECIFICATIONS
2. CONCRETE: 4,000 PSI AT 28 DAYS
3. REINFORCEMENT: #5 BAR @ 12" C.C. E.W. (GRADE 60) - 2" MIN. REBAR CLEARANCE (TYP)
4. NO STEPS AND NO INVERT CHANNEL
5. CASTING SUPPLIED BY OTHERS (HOE 470 FRAME, GRATE, & CURB HOOD)

Rim: 705.03' Rim to Invert: 3.03' Slack: 0.36" Sump: 0" Step Position:

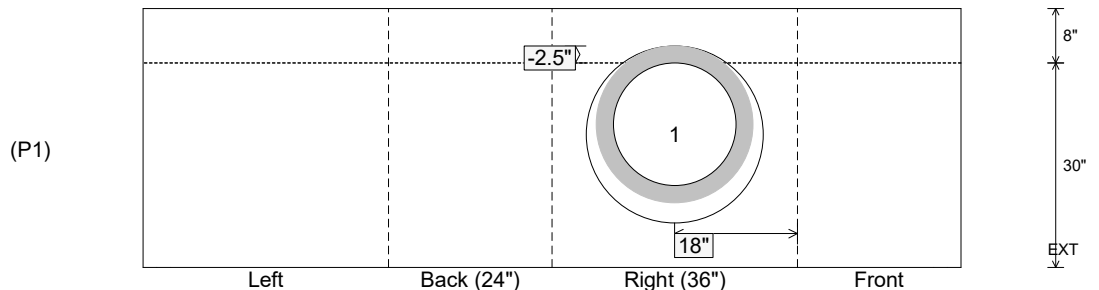
Position	Elev	Angle	Ext. (cw)	Pipe	Pipe OD	Connector	Hole	Horz Size	Up ()	Offset
Invert 1	702'	90°	26"	18" RCP B WALL	23"	Hole 26	26"	26"	-2.5"	0"
Invert 2										
Invert 3										
Invert 4										
Invert 5										
Invert 6										
Invert 7										
Invert 8										

RIGHT-SIDE UP VIEW (int. dimensions)

UPSIDE-DOWN VIEW (int. dimenions)



INSIDE WALL DIMENSIONS



Coating (Int):
Coating (Ext):

Seam Up: Flat
Seam Dn: n/a

Wall Thickness: 8"
Floor Height: 8"

Height (Int): 30"
Height (Ext): 38"

Weight (Net): 4101 lb
Volume (Net): 1.05cu.yd