

Job Name: 25-4337 - Maywood Phase13
 Job Location: Bardstown, KY
 Contractor: Buzick Construction

Plant: 100

Tech: J. Horsley - F

12/9/2025 11:29:32 AM

PC: C. Goff



Structure ID: CB10

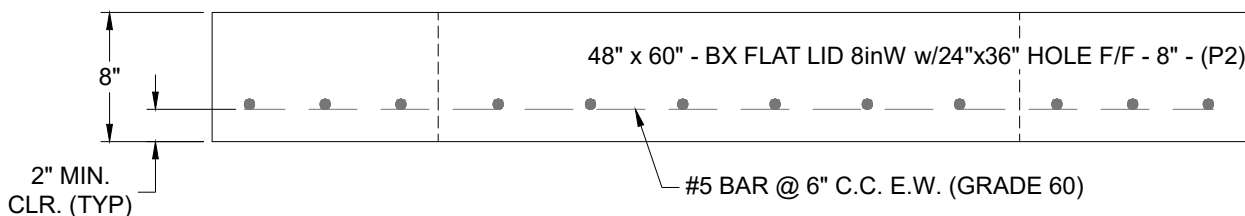
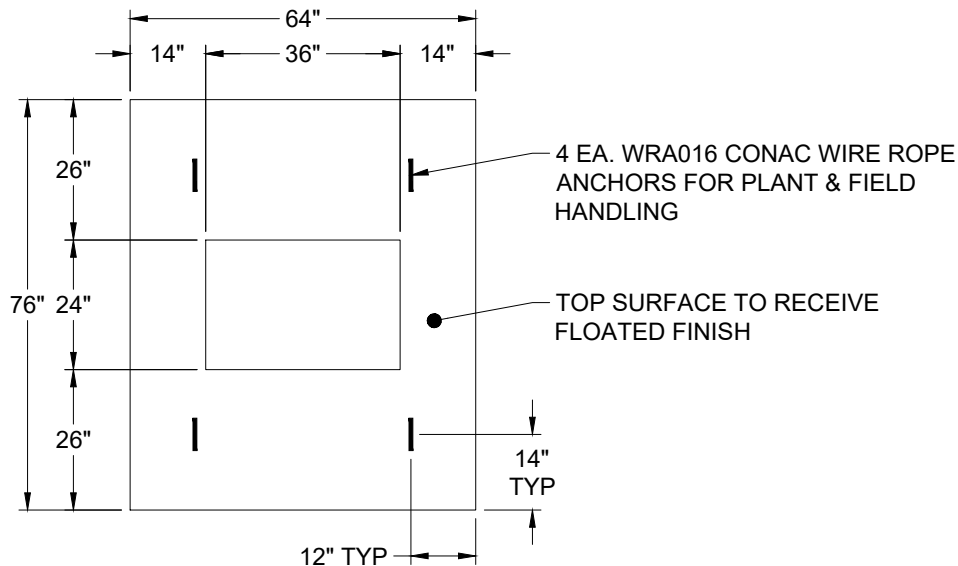
P2 BX4860-08LD08-24X36

BX FLAT LID 8inW w/24"x36" HOLE F/F

- P3) 24" x 36" - CASTING HEIGHT - 3"
- P2) 48" x 60" - BX FLAT LID 8inW w/24"x36" HOLE F/F - 8"
- P1) 48" x 60" - BOX BASE 8inW, 8inF, Variable Ht F/n - 51"
- 1) SECONDARY POUR
- 1) 48" x 60" - Conseal CS-102 1.00"
- 1) 24" x 36" - Conseal CS-102 1.00"
- 1) Hole - 44
- 1) Hole - 38
- 1) Hole - 30
- 1) Hole - 24

0 lb
 2685 lb
 8940 lb
 0 lb
 0 lb
 0 lb
 0 lb
 0 lb
 0 lb
 0 lb
 0 lb
 0 lb
 Structure Total: 11625 lb

- Structure Notes:
1. PER ASTM C-913 SPECIFICATIONS
 2. CONCRETE: 4,000 PSI AT 28 DAYS
 3. REINFORCEMENT: #5 BAR @ 6" C.C. E.W. (GRADE 60) - 2" MIN. REBAR CLEARANCE (TYP)
 4. NO STEPS AND NO INVERT CHANNEL
 5. CASTING SUPPLIED BY OTHERS (HOE 595 FRAME & GRATE)
 6. LIFTERS: 4 EA. WRA016 CONAC WIRE ROPE ANCHORS FOR PLANT & FIELD HANDLING



Coating (Int):
 Coating (Ext):

Seam Up: Flat
 Seam Dn: Flat

Wall Thickness: 8"

Height (Ext): 8"

Weight (Net): 2685 lb
 Volume (Net): 0.69cu.yd