

Job Name: 25-4337 - Maywood Phase13
 Job Location: Bardstown, KY
 Contractor: Buzick Construction

Plant: 100

12/9/2025 11:21:31 AM

Tech: J. Horsley - F

PC: C. Goff



Structure ID: CB10

P1 BX4860-08BAVF

BOX BASE 8inW, 8inF, Variable Ht F/n

- P3) 24" x 36" - CASTING HEIGHT - 3"
- P2) 48" x 60" - BX FLAT LID 8inW w/24"x36" HOLE F/F - 8"
- P1) 48" x 60" - BOX BASE 8inW, 8inF, Variable Ht F/n - 51"
- 1) SECONDARY POUR
- 1) 48" x 60" - Conseal CS-102 1.00"
- 1) 24" x 36" - Conseal CS-102 1.00"
- 1) Hole - 44
- 1) Hole - 38
- 1) Hole - 30
- 1) Hole - 24

0 lb
 2685 lb
 8940 lb
 0 lb
 0 lb
 0 lb
 0 lb
 0 lb
 0 lb
 0 lb
 0 lb
 Structure Total: 11625 lb

- Structure Notes:**
1. PER ASTM C-913 SPECIFICATIONS
 2. CONCRETE: 4,000 PSI AT 28 DAYS
 3. REINFORCEMENT: #5 BAR @ 12" C.C. E.W. (GRADE 60) - 2" MIN. REBAR CLEARANCE (TYP)
 4. NO STEPS AND NO INVERT CHANNEL
 5. CASTING SUPPLIED BY OTHERS (HOE 595 FRAME & GRATE)
 6. PRODUCTION TO WET STICK 24" X 30" #5 L-BARS SPACED @ 12" C.C. (GRADE 60) OUT OF FLOOR FOR WALL POUR TIE-IN (SEE L-BAR DETAIL)

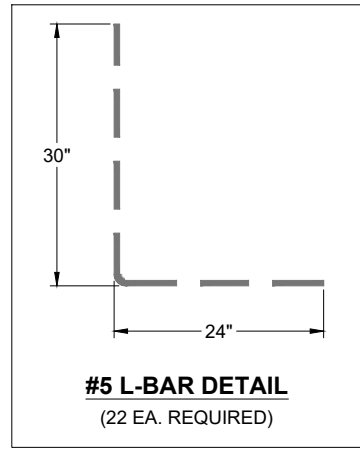
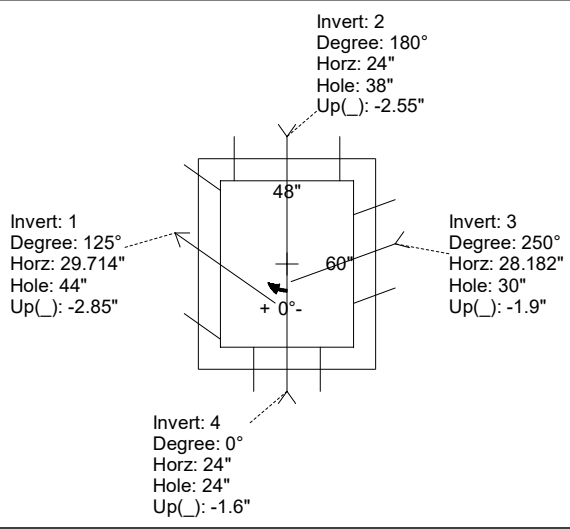
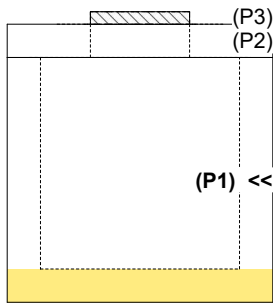
FIRST POUR (FLOOR): 3,265 LBS
SECOND POUR (WALLS): 5,675 LBS

Rim: 700.2' Rim to Invert: 5.23' Slack: 0.76" Sump: 0" Step Position:

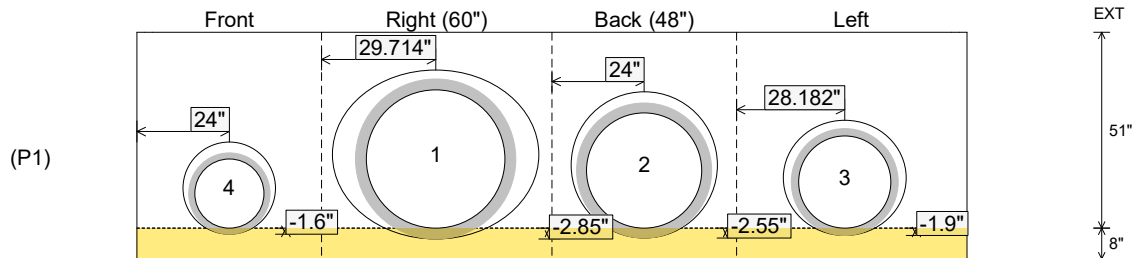
Position	Elev	Angle	Ext. (cw)	Pipe	Pipe OD	Connector	Hole	Horz Size	Up ()	Offset
Invert 1	694.97'	125°	43.316"	36" HDPE	41.7"	Hole 44	44"	53.714"	-2.85"	-14"
Invert 2	694.97'	180°	32"	30" HDPE	35.1"	Hole 38	38"	38"	-2.55"	0"
Invert 3	694.97'	250°	33.27"	24" HDPE	27.8"	Hole 30	30"	31.925"	-1.9"	6.5"
Invert 4	694.97'	0°	32"	18" HDPE	21.2"	Hole 24	24"	24"	-1.6"	0"
Invert 5										
Invert 6										
Invert 7										
Invert 8										

RIGHT-SIDE UP VIEW (int. dimensions)

UPSIDE-DOWN VIEW (int. dimensions)



INSIDE WALL DIMENSIONS



Coating (Int):
 Coating (Ext):

Seam Up: Flat
 Seam Dn: n/a

Wall Thickness: 8"
 Floor Height: 8"

Height (Int): 51"
 Height (Ext): 59"

Weight (Net): 8940 lb
 Volume (Net): 2.28cu.yd

Job Name: 25-4337 - Maywood Phase13
 Job Location: Bardstown, KY
 Contractor: Buzick Construction

Plant: 100

Tech: J. Horsley - F

12/9/2025 11:21:31 AM

PC: C. Goff



Structure ID: CB10

P1 BX4860-08BAVF

BOX BASE 8inW, 8inF, Variable Ht F/n

- P3) 24" x 36" - CASTING HEIGHT - 3"
- P2) 48" x 60" - BX FLAT LID 8inW w/24"x36" HOLE F/F - 8"
- P1) 48" x 60" - BOX BASE 8inW, 8inF, Variable Ht F/n - 51"
- 1) SECONDARY POUR
- 1) 48" x 60" - Conseal CS-102 1.00"
- 1) 24" x 36" - Conseal CS-102 1.00"
- 1) Hole - 44
- 1) Hole - 38
- 1) Hole - 30
- 1) Hole - 24

0 lb
 2685 lb
 8940 lb
 0 lb
 0 lb
 0 lb
 0 lb
 0 lb
 0 lb
 0 lb
 0 lb
 Structure Total: 11625 lb

- Structure Notes:**
1. PER ASTM C-913 SPECIFICATIONS
 2. CONCRETE: 4,000 PSI AT 28 DAYS
 3. REINFORCEMENT: #5 BAR @ 12" C.C. E.W. (GRADE 60) - 2" MIN. REBAR CLEARANCE (TYP)
 4. NO STEPS AND NO INVERT CHANNEL
 5. CASTING SUPPLIED BY OTHERS (HOE 595 FRAME & GRATE)
 6. LIFTERS: 4 EA. 5CA14 CONAC A-ANCHORS FOR PLANT & FIELD HANDLING - INSTALLED IN 0° & 180° WALLS, MIN. 16" FROM TOP OF WALLS

FIRST POUR (FLOOR): 3,265 LBS

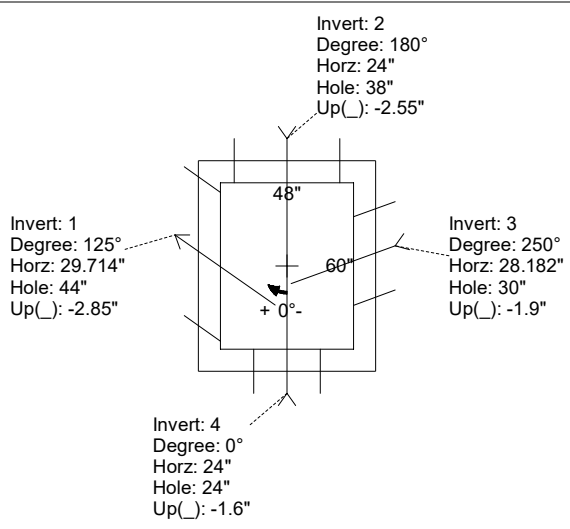
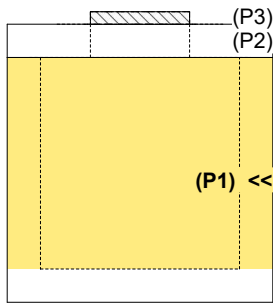
SECOND POUR (WALLS): 5,675 LBS

Rim: 700.2' Rim to Invert: 5.23' Slack: 0.76" Sump: 0" Step Position:

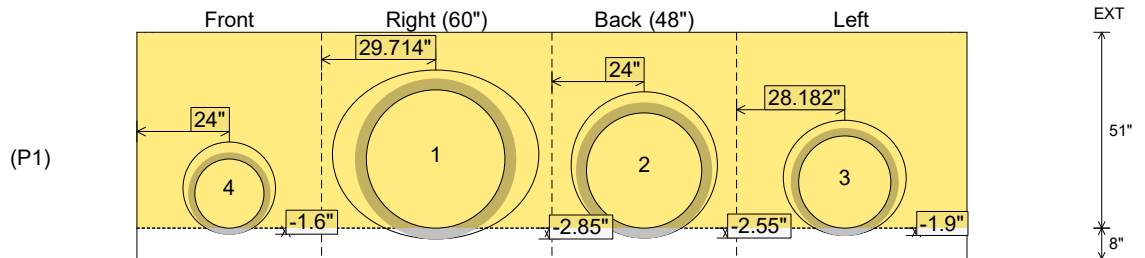
Position	Elev	Angle	Ext. (cw)	Pipe	Pipe OD	Connector	Hole	Horz Size	Up ()	Offset
Invert 1	694.97'	125°	43.316"	36" HDPE	41.7"	Hole 44	44"	53.714"	-2.85"	-14"
Invert 2	694.97'	180°	32"	30" HDPE	35.1"	Hole 38	38"	38"	-2.55"	0"
Invert 3	694.97'	250°	33.27"	24" HDPE	27.8"	Hole 30	30"	31.925"	-1.9"	6.5"
Invert 4	694.97'	0°	32"	18" HDPE	21.2"	Hole 24	24"	24"	-1.6"	0"
Invert 5										
Invert 6										
Invert 7										
Invert 8										

RIGHT-SIDE UP VIEW (int. dimensions)

UPSIDE-DOWN VIEW (int. dimensions)



INSIDE WALL DIMENSIONS



Coating (Int):
 Coating (Ext):

Seam Up: Flat
 Seam Dn: n/a

Wall Thickness: 8"
 Floor Height: 8"

Height (Int): 51"
 Height (Ext): 59"

Weight (Net): 8940 lb
 Volume (Net): 2.28cu.yd