



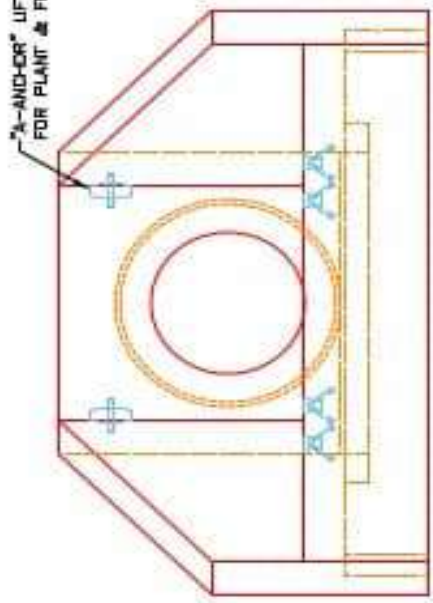
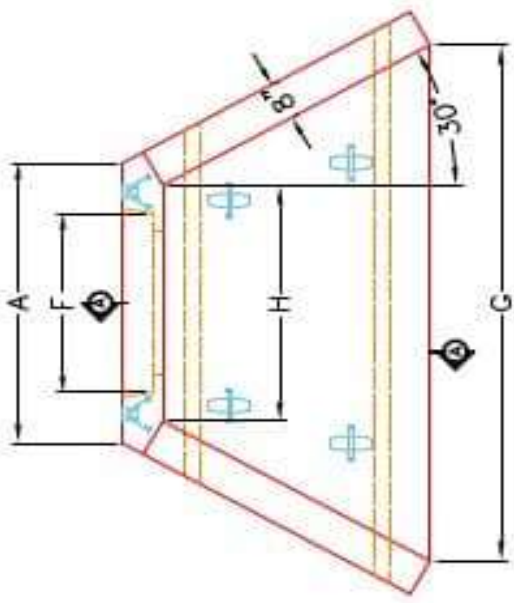
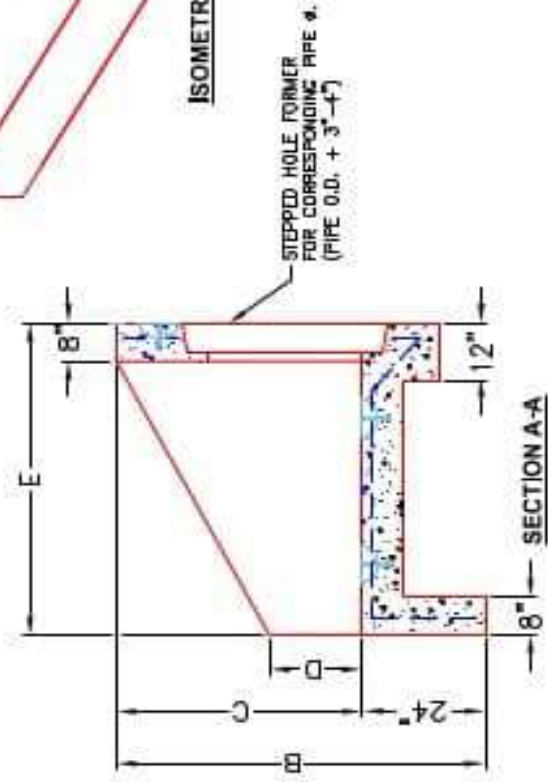
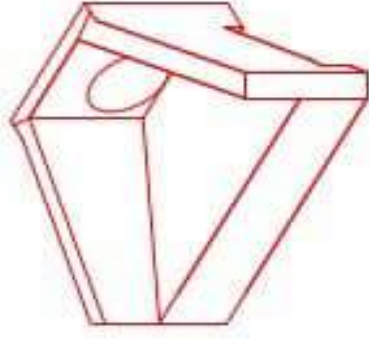
Structure ID: 40-54337

P1 HWPC36

36" - PIPE CULVERT HEADWALL F/F

DIMENSIONS

PIPE #	A	B	C	D	E	F	G	H	WEIGHT
36"	1'-0"	6'-0"	1'-0"	1'-0"	5'-0"	1'-0"	1'-0"	3'-0"	1400 lbs.
48"	1'-0"	6'-0"	1'-0"	1'-0"	5'-0"	1'-0"	1'-0"	3'-0"	1600 lbs.
60"	1'-0"	6'-0"	1'-0"	1'-0"	5'-0"	1'-0"	1'-0"	3'-0"	1800 lbs.
72"	1'-0"	6'-0"	1'-0"	1'-0"	5'-0"	1'-0"	1'-0"	3'-0"	2000 lbs.
84"	1'-0"	6'-0"	1'-0"	1'-0"	5'-0"	1'-0"	1'-0"	3'-0"	2200 lbs.
96"	1'-0"	6'-0"	1'-0"	1'-0"	5'-0"	1'-0"	1'-0"	3'-0"	2400 lbs.



APPROVED FOR DESIGN ONLY

APPROVED
 1/20/2021 9:50 AM
 KYTC DIV. OF CONSTRUCTION

INSTRUCTION

INFRASTRUCTURE PRECAST, INC.
 601 WEST 7TH ST., MANASSAS, VA 20108
 PHONE: (703) 336-2266, FAX: (703) 336-1811

KYTC 30" - 84" PIPE CULVERT HEADWALL

ISSUED: 12-14-20
 DRAWN BY: H. RICHARD
 CHECKED BY: J. H. RICHARD
 WWW.ICASTINC.COM SCALE: 1/8"

- NOTES:**
1. CONCRETE: KYTC APPROVED.
 2. REINFORCING: #5 BAR @ 12" C/C E.W. - GRADE 60, (WITH 2" CONCRETE COVER MINIMUM)
 3. REINFORCING BARS TO BE TACK WELDED OR TIED.
 4. PIPE AND LIFTING ANCHOR POCKETS TO BE GROUTED WITH KYTC APPROVED NON-SHRINK GROUT.
 5. DRAWING TO BE USED IN CONJUNCTION WITH KYTC STD. DRAWING RDH-110-02, RDH-210-03 AND THE STANDARD SPECIFICATIONS FOR ROAD AND BRIDGE CONSTRUCTION.
 6. 3" CHAMFER ON ALL EXPOSED EDGES.
 7. PREFORMED STEPPED HOLE SIZED AS PER O.D. OF PIPE + 3" - 4".