

Job Name: 25-4299 - Seneca High School
 Job Location: Louisville, KY
 Contractor: Dan Cristiani Excavating Co. Inc.

Plant: 100
 2/16/2026 3:52:28 PM

Tech: J. Horsley
 PC: J. Jarvis



Structure ID: G5

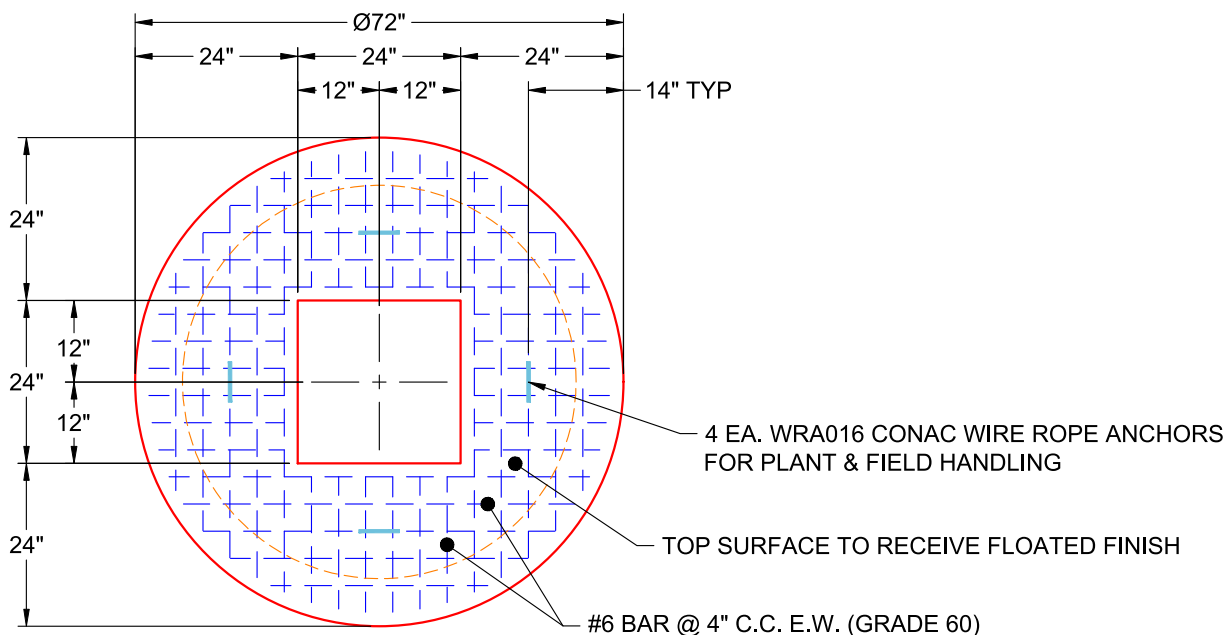
P3 MH060LD08-24SQ

MH FLAT TOP w/24"x24" Hole F/F

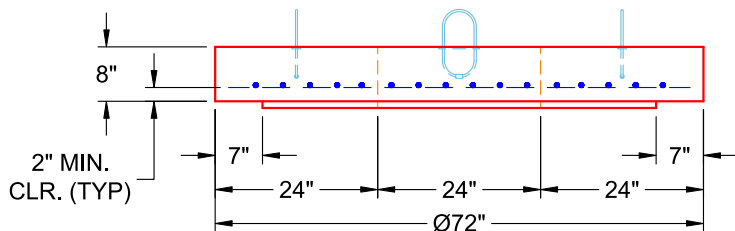
- P4) 24" x 24" - CASTING HEIGHT - 4"
- P3) 60" - MH FLAT TOP w/24"x24" Hole F/F - 8"
- P2) 60" - MH RISER F/G - 18"
- P1) 60" - MH BASE Custom Ht T/n - 68"
- 2) 60" - Conseal CS-102 1.00"
- 1) 24" x 24" - Conseal CS-102 1.00"
- 1) Hole - 44
- 1) Hole - 30
- 1) Hole - 16
- 7) MH Step ML-10-TDS-NCR - 10"

0 lb
 2347 lb
 1879 lb
 8518 lb
 0 lb
 0 lb
 0 lb
 0 lb
 0 lb
 0 lb
 0 lb
 Structure Total: 12744 lb

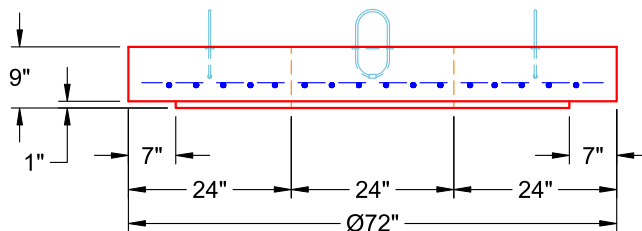
- Structure Notes:**
1. PER LOUISVILLE MSD / ASTM C-478 SPECIFICATIONS
 2. CONCRETE: 4,000 PSI AT 28 DAYS
 3. REINFORCEMENT: #6 BAR @ 4" C.C. E.W. (GRADE 60) - 2" MIN. REBAR CLEARANCE (TYP)
 4. HOE 280T FRAME & GRATE SUPPLIED BY OTHERS
 5. LIFTERS: 4 EA. WRA016 CONAC WIRE ROPE ANCHORS FOR PLANT & FIELD HANDLING
 6. TOP SURFACE TO RECEIVE FLOATED FINISH



**PLAN VIEW
(RIGHT SIDE UP)**



**FRONT VIEW
(RIGHT SIDE UP)**



**SIDE VIEW
(RIGHT SIDE UP)**

Coating (Int):
 Coating (Ext):

Seam Up: Flat
 Seam Dn: Flat

Wall Thickness: 6"

Height (Ext): 8"

Weight (Net): 2347 lb
 Volume (Net): 0.6cu.yd