

Job Name: 25-4299 - Seneca High School
 Job Location: Louisville, KY
 Contractor: Dan Cristiani Excavating Co. Inc.

Plant: 100
 2/16/2026 3:51:19 PM

Tech: J. Horsley
 PC: J. Jarvis



Structure ID: G3

P1 BX6060-08BAVF

BOX BASE 8inW, 8inF, Variable Ht F/n

- P3) 24" - CASTING HEIGHT - 7"
- P2) 60" x 60" - BX FLAT LID 8"W w/24" Hole F/F - 8"
- P1) 60" x 60" - BOX BASE 8inW, 8inF, Variable Ht F/n - 48"
- 1) SECONDARY POUR
- 1) 60" x 60" - Conseal CS-102 1.00"
- 2) Hole - 44
- 1) Hole - 24
- 5) MH Step ML-10-TDS-NCR - 10"

0 lb
 3574 lb
 10200 lb
 0 lb
 0 lb
 0 lb
 0 lb
 0 lb
 Structure Total: 13774 lb

- Structure Notes:**
1. PER LOUISVILLE MSD / ASTM C-913 SPECIFICATIONS
 2. CONCRETE: 4,000 PSI AT 28 DAYS
 3. REINFORCEMENT: #5 BAR @ 12" C.C. E.W. (GRADE 60) - 2" MIN. REBAR CLEARANCE (TYP)
 4. NO STORM INVERT
 5. STEPS AT 90 DEGREES
 6. HOE MC-420 FRAME & COVER "STORM LOU-MSD" SUPPLIED BY OTHERS
 7. WET STICK 28" X 24" #5 L-BARS SPACED @ 12" C.C. (GRADE 60) OUT OF FLOOR FOR WALL POUR TIE-IN (SEE L-BAR DETAIL)
 8. LIFTERS: 4 EA. 5CA14 CONAC A-ANCHORS FOR PLANT & FIELD HANDLING - INSTALLED IN FLOOR, MIN. 16" FROM EDGE OF SLAB

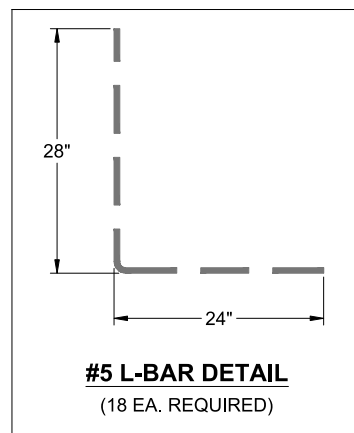
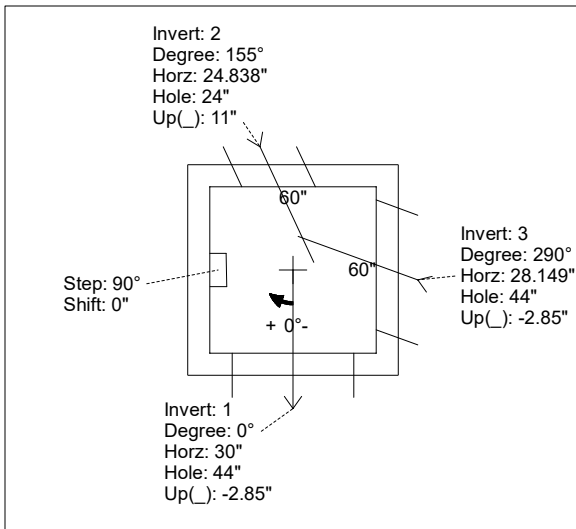
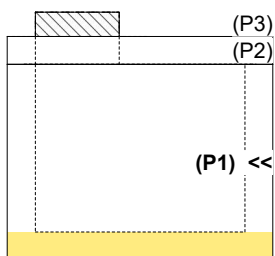
FIRST POUR (FLOOR): 3,877 LBS
SECOND POUR (WALLS): 6,323 LBS

Rim: 482.25' Rim to Invert: 5.25' Slack: 0" Sump: 0" Step Position: 90°

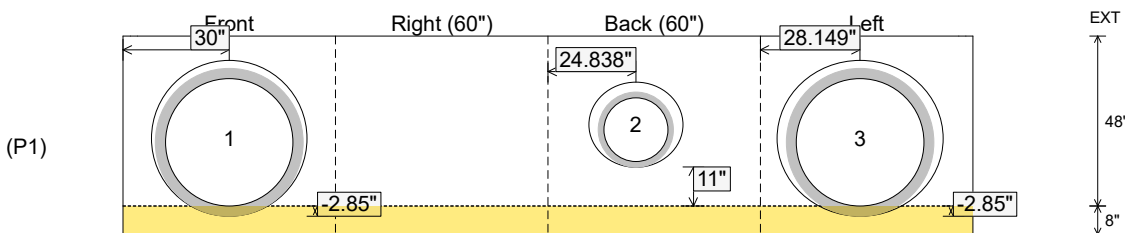
Position	Elev	Angle	Ext. (cw)	Pipe	Pipe OD	Connector	Hole	Horz Size	Up ()	Offset
Invert 1	477'	0°	38"	36" HDPE	41.7"	Hole 44	44"	44"	-2.85"	0"
Invert 2	478.05'	155°	29.107"	18" HDPE	21.2"	Hole 24	24"	26.481"	11"	8"
Invert 3	477'	290°	39.061"	36" HDPE	41.7"	Hole 44	44"	46.824"	-2.85"	-12"
Invert 4										
Invert 5										
Invert 6										
Invert 7										
Invert 8										

RIGHT-SIDE UP VIEW (int. dimensions)

UPSIDE-DOWN VIEW (int. dimensions)



INSIDE WALL DIMENSIONS



Coating (Int):
 Coating (Ext):

Seam Up: Flat
 Seam Dn: n/a

Wall Thickness: 8"
 Floor Height: 8"

Height (Int): 48"
 Height (Ext): 56"

Weight (Net): 10200 lb
 Volume (Net): 2.6cu.yd

Job Name: 25-4299 - Seneca High School
 Job Location: Louisville, KY
 Contractor: Dan Cristiani Excavating Co. Inc.

Plant: 100
 2/16/2026 3:51:19 PM

Tech: J. Horsley
 PC: J. Jarvis



Structure ID: G3

P1 BX6060-08BAVF

BOX BASE 8inW, 8inF, Variable Ht F/n

- P3) 24" - CASTING HEIGHT - 7"
- P2) 60" x 60" - BX FLAT LID 8"W w/24" Hole F/F - 8"
- P1) 60" x 60" - BOX BASE 8inW, 8inF, Variable Ht F/n - 48"
- 1) SECONDARY POUR
- 1) 60" x 60" - Conseal CS-102 1.00"
- 2) Hole - 44
- 1) Hole - 24
- 5) MH Step ML-10-TDS-NCR - 10"

0 lb
 3574 lb
 10200 lb
 0 lb
 0 lb
 0 lb
 0 lb
 0 lb

 0 lb
 Structure Total: 13774 lb

Structure Notes:

1. PER LOUISVILLE MSD / ASTM C-913 SPECIFICATIONS
2. CONCRETE: 4,000 PSI AT 28 DAYS
3. REINFORCEMENT: #5 BAR @ 12" C.C. E.W. (GRADE 60) - 2" MIN. REBAR CLEARANCE (TYP)
4. NO STORM INVERT
5. STEPS AT 90 DEGREES
6. HOE MC-420 FRAME & COVER "STORM LOU-MSD" SUPPLIED BY OTHERS

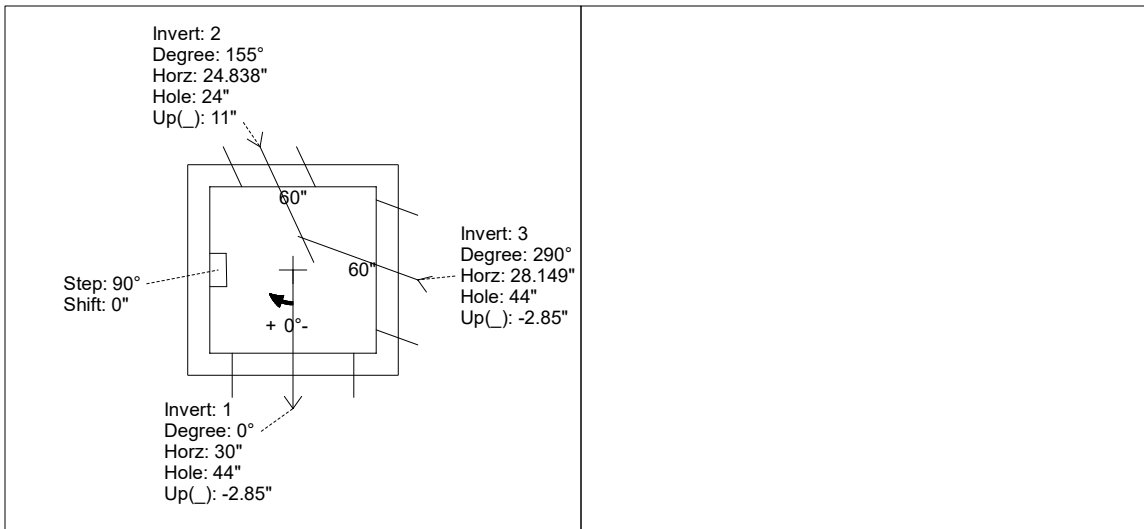
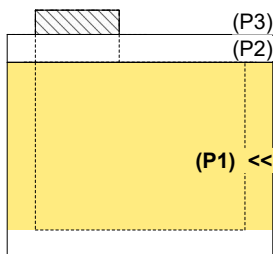
FIRST POUR (FLOOR): 3,877 LBS
SECOND POUR (WALLS): 6,323 LBS

Rim: 482.25' Rim to Invert: 5.25' Slack: 0" Sump: 0" Step Position: 90°

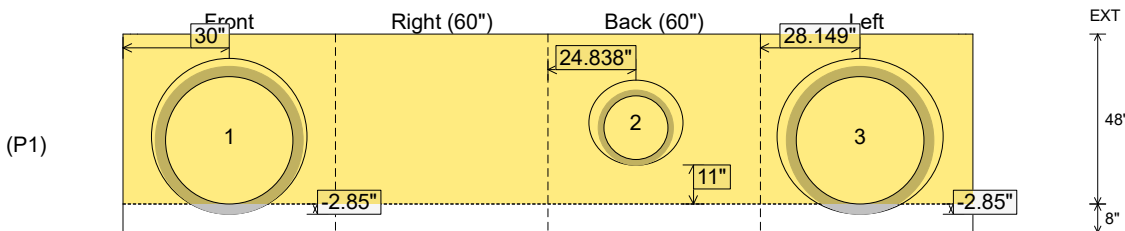
Position	Elev	Angle	Ext. (cw)	Pipe	Pipe OD	Connector	Hole	Horz Size	Up ()	Offset
Invert 1	477'	0°	38"	36" HDPE	41.7"	Hole 44	44"	44"	-2.85"	0"
Invert 2	478.05'	155°	29.107"	18" HDPE	21.2"	Hole 24	24"	26.481"	11"	8"
Invert 3	477'	290°	39.061"	36" HDPE	41.7"	Hole 44	44"	46.824"	-2.85"	-12"
Invert 4										
Invert 5										
Invert 6										
Invert 7										
Invert 8										

RIGHT-SIDE UP VIEW (int. dimensions)

UPSIDE-DOWN VIEW (int. dimensions)



INSIDE WALL DIMENSIONS



Coating (Int):
 Coating (Ext):

Seam Up: Flat
 Seam Dn: n/a

Wall Thickness: 8"
 Floor Height: 8"

Height (Int): 48"
 Height (Ext): 56"

Weight (Net): 10200 lb
 Volume (Net): 2.6cu.yd