

Job Name: 25-4299 - Seneca High School
 Job Location: Louisville, KY
 Contractor: Dan Cristiani Excavating Co. Inc.

Plant: 100
 2/16/2026 3:52:25 PM

Tech: J. Horsley
 PC: J. Jarvis



Structure ID: G2

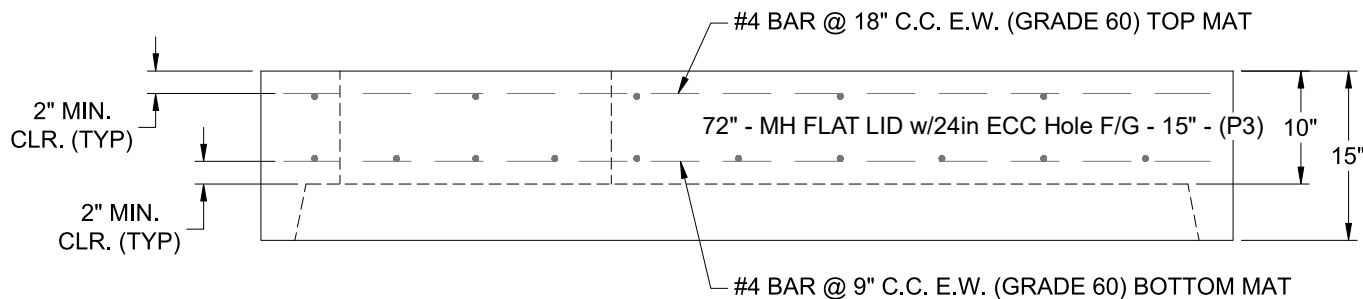
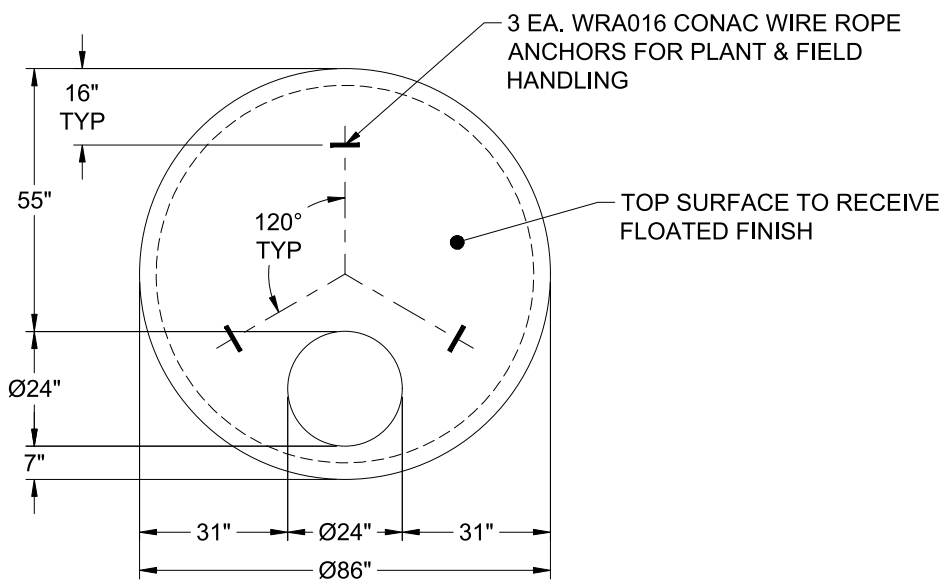
P3 MH072LD15-24ECC

MH FLAT LID w/24in ECC Hole F/G

- P4) 24" - CASTING HEIGHT - 7"
- P3) 72" - MH FLAT LID w/24in ECC Hole F/G - 15"
- P2) 72" - MH RISER T/G - 24"
- P1) 72" - MH BASE Custom Ht T/n - 70"
- 2) 72" - Conseal CS-102 1.00"
- 1) Hole - 54
- 1) Hole - 24
- 1) Hole - 44
- 7) MH Step ML-10-TDS-NCR - 10"

0 lb
 5098 lb
 3499 lb
 11392 lb
 0 lb
 0 lb
 0 lb
 0 lb
 0 lb
 0 lb
 Structure Total: 19988 lb

- Structure Notes:**
1. PER LOUISVILLE MSD / ASTM C-478 SPECIFICATIONS
 2. CONCRETE: 4,000 PSI AT 28 DAYS
 3. REINFORCEMENT - 2" MIN. REBAR CLEARANCE (TYP):
 - TOP MAT: #4 BAR @ 18" C.C. E.W. (GRADE 60)
 - BOTTOM MAT: #4 BAR @ 9" C.C. E.W. (GRADE 60)
 4. HOE MC-420 FRAME & COVER "STORM LOU-MSD" SUPPLIED BY OTHERS
 5. LIFTERS: 3 EA. WRA016 CONAC WIRE ROPE ANCHORS FOR PLANT & FIELD HANDLING
 6. TOP SURFACE TO RECEIVE FLOATED FINISH



Coating (Int):
 Coating (Ext):

Seam Up: Flat
 Seam Dn: Groove

Wall Thickness: 7"

Height (Ext): 15"

Weight (Net): 5098 lb
 Volume (Net): 1.3cu.yd