

Job Name: 25-4299 - Seneca High School
Job Location: Louisville, KY
Contractor: Dan Cristiani Excavating Co. Inc.

PC: J. Jarvis
 TECH: J. Horsley
 Plant: 100



Structure ID: **G15**
 Spec: Storm
 Type: STM.MH
 Size: 72"

Rim: 483.5'
 Invert: 477.24'
 Rim to Invert: 6.26'

Sump: 2.85"
 Floor (Top): 477.003'
 Floor Height: 8"

Floor (Bot): 476.336'
 Overall Height: 7.083'
 Slack: 0.97"

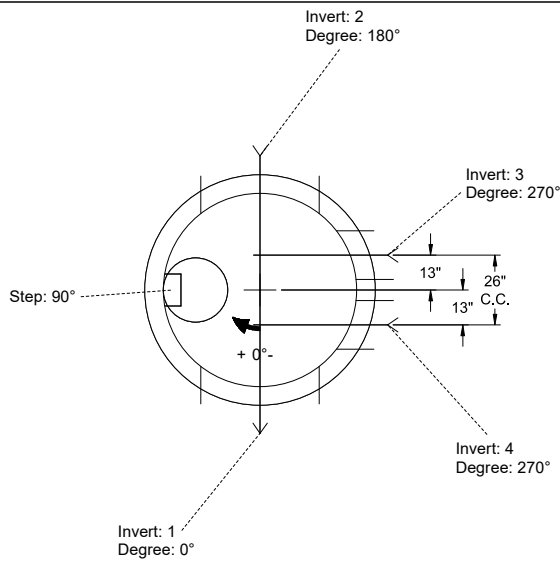
Structure Notes:

1. PER ASTM C-478 SPECIFICATIONS
2. CONCRETE: 4,000 PSI AT 28 DAYS
3. REINFORCEMENT:
 - FLAT LID TOP MAT: #4 BAR @ 18" C.C. E.W. (GRADE 60)
 - FLAT LID BOTTOM MAT: #4 BAR @ 9" C.C. E.W. (GRADE 60)
 - BASE: PER ASTM A615
4. NO STORM INVERT
5. STEPS AT 90 DEGREES
6. HOE MC-420 FRAME & COVER "STORM LOU-MSD" SUPPLIED BY OTHERS
7. THIS STRUCTURE CONTAINS A WEIR WALL - SEE ATTACHED DRAWING FOR DETAILS

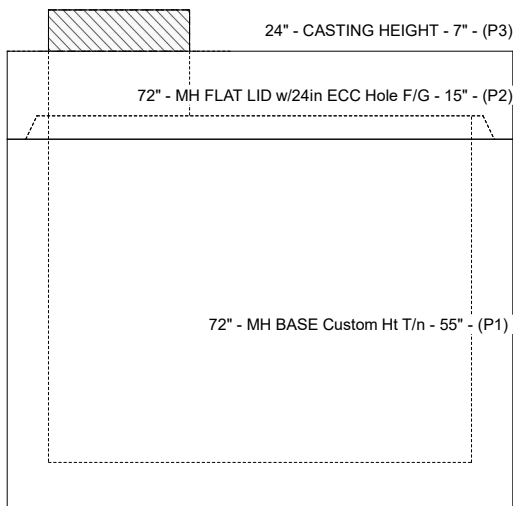
STRUCTURE SUMMARY:

- P3) 24" - CASTING HEIGHT - 7"
 - P2) 72" - MH FLAT LID w/24in ECC Hole F/G - 15"
 - P1) 72" - MH BASE Custom Ht T/n - 55"
 - 1) SECONDARY POUR - WEIR WALL
 - 1) 72" - Conseal CS-102 1.00"
 - 2) Hole - 44
 - 2) Hole - 18
 - 4) MH Step ML-10-TDS-NCR - 10"
- 0 lb
 5098 lb
 9697 lb
 720 lb
 0 lb
 0 lb
 0 lb
 0 lb
 0 lb

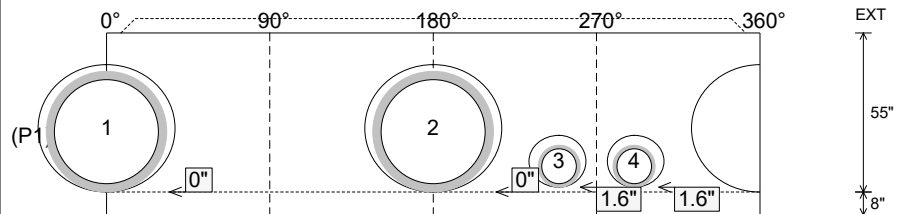
 Structure Total: 15515 lb



Position	Elev	Angle	Pipe	Pipe OD	Hole	Connector	Up (")	Ref
Rim	483.5'							
Reducer								
Invert 1	477.24'	0°	36" HDPE	41.7"	44"	Hole 44	0"	P1
Invert 2	477.24'	180°	36" HDPE	41.7"	44"	Hole 44	0"	P1
Invert 3	477.24'	270°	12" HDPE	14.5"	18"	Hole 18	1.6"	P1
Invert 4	477.24'	270°	12" HDPE	14.5"	18"	Hole 18	1.6"	P1
Invert 5								
Invert 6								
Invert 7								
Invert 8								

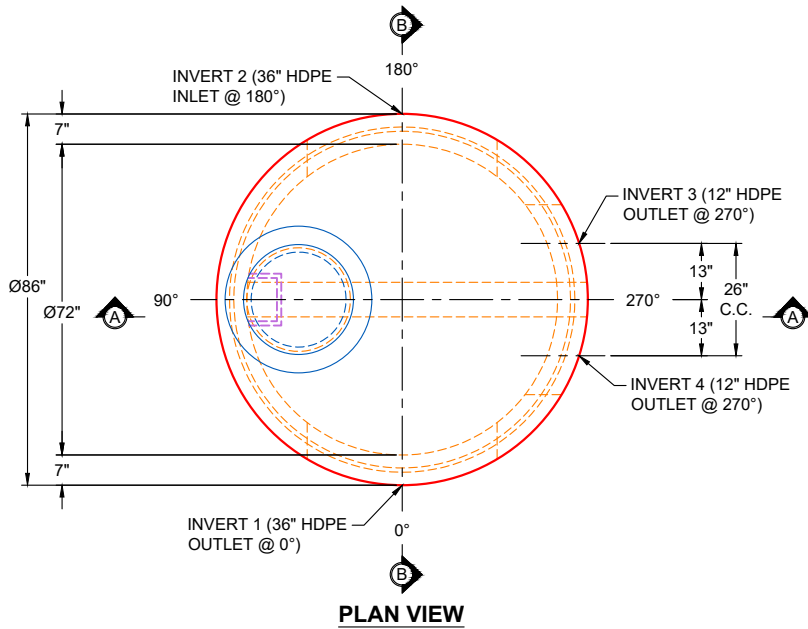


Cast (Int. Dim.) - Interior Dimensions

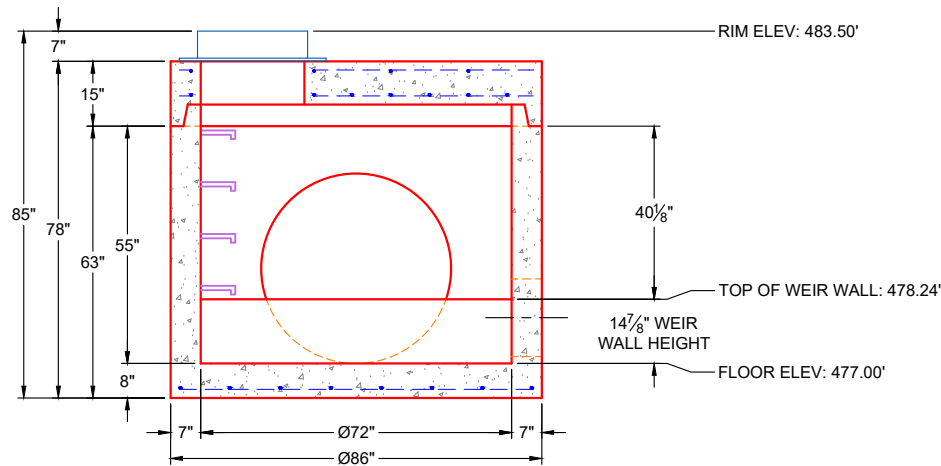


Submittal Drawing
 2/16/2026 1:45:59 PM

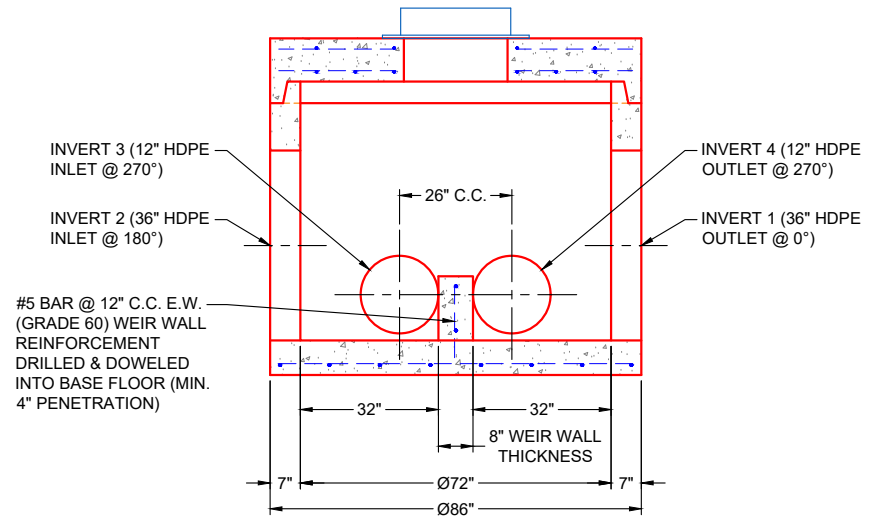
SUBMITTAL
 APPROVED BY:



PLAN VIEW



SECTION A-A



SECTION B-B

GENERAL NOTES:

1. PER ASTM C-478 (LATEST REVISION)
2. CONCRETE: 4,000 PSI AT 28 DAYS
3. WEIR WALL REINFORCEMENT: #5 BAR @ 12" C.C. E.W. (GRADE 60) DRILLED & DOWELED INTO BASE FLOOR (MIN. 4" PENETRATION)
4. WEIGHTS
 55" BASE: 9,697 LBS
 Ø72" X 14 7/8" X 8" WEIR WALL: 720 LBS
 BASE & WEIR WALL TOTAL WEIGHT: 10,417 LBS

REVISION INFORMATION

REV.	DATE:	NO REVISIONS TO DATE



SUBMITTAL DRAWING: Ø72" X 14 7/8" X 8" WEIR WALL	
CUSTOMER: DAN CRISTIANI EXCAVATING CO. INC.	
PROJECT: SENECA HIGH SCHOOL	
STRUCTURE: G15	
QUOTE/SALES ORDER NO: 25-4299	
CHECKED BY: B. SMITH	DRAWN BY: K. CARDWELL
DATE: 02/16/26	SCALE: NTS PG. 1 OF 1