

Job Name: 25-4299 - Seneca High School  
 Job Location: Louisville, KY  
 Contractor: Dan Cristiani Excavating Co. Inc.

Plant: 100  
 2/16/2026 3:52:33 PM

Tech: J. Horsley  
 PC: J. Jarvis



**Structure ID: G15**

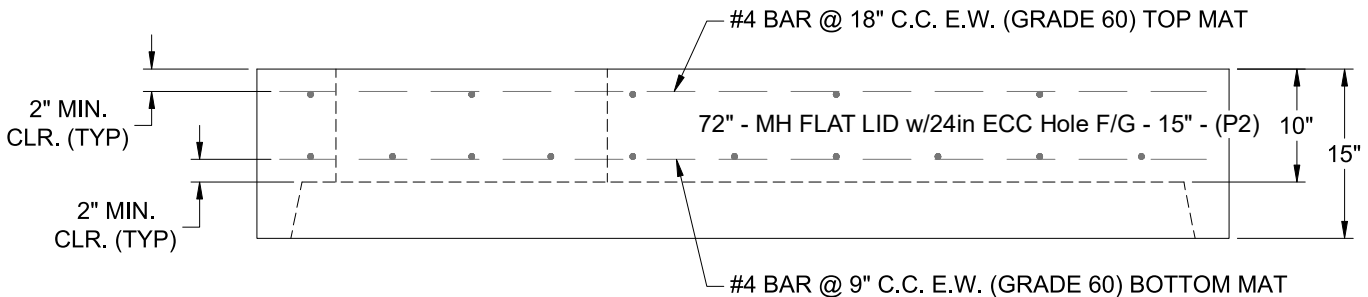
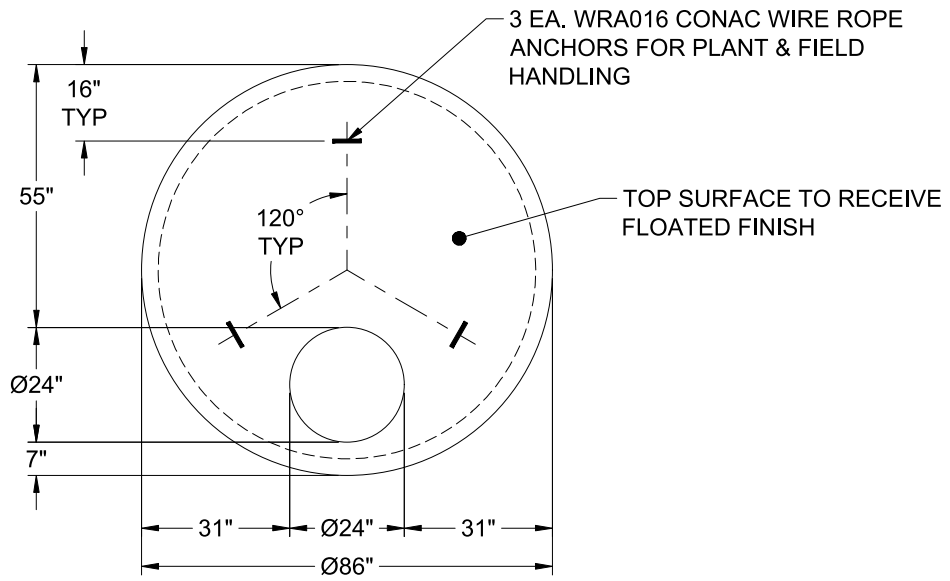
**P2 MH072LD15-24ECC**

**MH FLAT LID w/24in ECC Hole F/G**

- P3) 24" - CASTING HEIGHT - 7"
- P2) 72" - MH FLAT LID w/24in ECC Hole F/G - 15"
- P1) 72" - MH BASE Custom Ht T/n - 55"
- 1) SECONDARY POUR - WEIR WALL
- 1) 72" - Conseal CS-102 1.00"
- 2) Hole - 44
- 2) Hole - 18
- 4) MH Step ML-10-TDS-NCR - 10"

	0 lb
	5098 lb
	9697 lb
	720 lb
	0 lb
	0 lb
	0 lb
	0 lb
Structure Total:	15515 lb

- Structure Notes:
1. PER ASTM C-478 SPECIFICATIONS
  2. CONCRETE: 4,000 PSI AT 28 DAYS
  3. REINFORCEMENT - 2" MIN. REBAR CLEARANCE (TYP):
    - TOP MAT: #4 BAR @ 18" C.C. E.W. (GRADE 60)
    - BOTTOM MAT: #4 BAR @ 9" C.C. E.W. (GRADE 60)
  4. HOE MC-420 FRAME & COVER "STORM LOU-MSD" SUPPLIED BY OTHERS
  5. LIFTERS: 3 EA. WRA016 CONAC WIRE ROPE ANCHORS FOR PLANT & FIELD HANDLING
  6. TOP SURFACE TO RECEIVE FLOATED FINISH



Coating (Int): Coating (Ext):	Seam Up: Flat Seam Dn: Groove	Wall Thickness: 7"	Height (Ext): 15"	Weight (Net): 5098 lb Volume (Net): 1.3cu.yd
----------------------------------	----------------------------------	--------------------	-------------------	---