

Job Name: 25-4299 - Seneca High School
 Job Location: Louisville, KY
 Contractor: Dan Cristiani Excavating Co. Inc.

Plant: 100
 2/16/2026 3:51:33 PM

Tech: J. Horsley
 PC: J. Jarvis



Structure ID: G15

P1 MH072BAVF

MH BASE Custom Ht T/n

- P3) 24" - CASTING HEIGHT - 7"
- P2) 72" - MH FLAT LID w/24in ECC Hole F/G - 15"
- P1) 72" - MH BASE Custom Ht T/n - 55"
- 1) SECONDARY POUR - WEIR WALL
- 1) 72" - Conseal CS-102 1.00"
- 2) Hole - 44
- 2) Hole - 18
- 4) MH Step ML-10-TDS-NCR - 10"

0 lb
 5098 lb
 9697 lb
 720 lb
 0 lb
 0 lb
 0 lb
 0 lb

 0 lb
 Structure Total: 15515 lb

- Structure Notes:**
1. PER ASTM C-478 SPECIFICATIONS
 2. CONCRETE: 4,000 PSI AT 28 DAYS
 3. REINFORCEMENT: PER ASTM A615
 4. NO STORM INVERT
 5. STEPS AT 90 DEGREES
 6. HOE MC-420 FRAME & COVER "STORM LOU-MSD" SUPPLIED BY OTHERS
 7. THIS STRUCTURE CONTAINS A WEIR WALL - SEE ATTACHED PG. 2 OF 2 FOR DETAILS

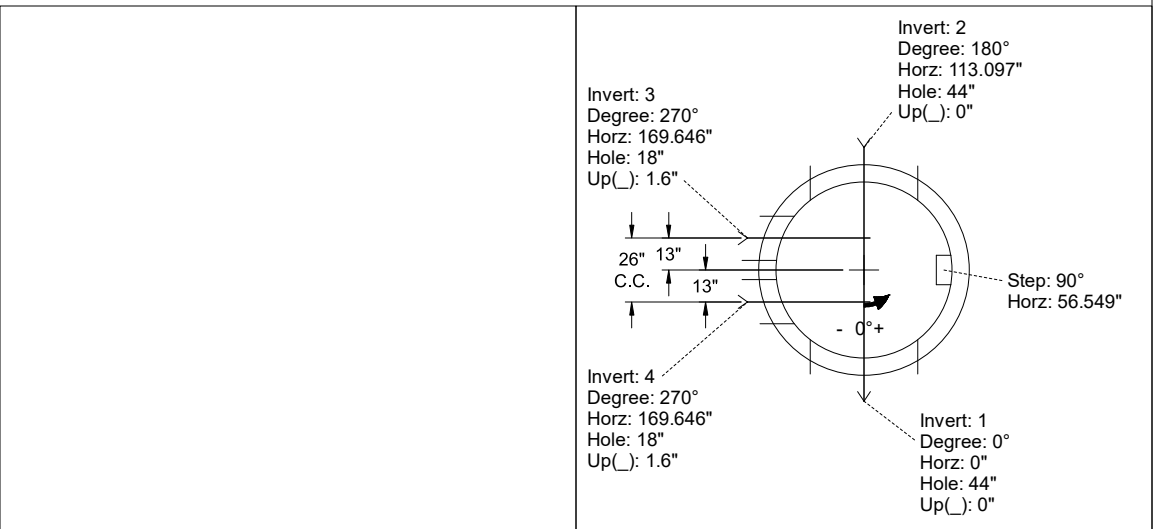
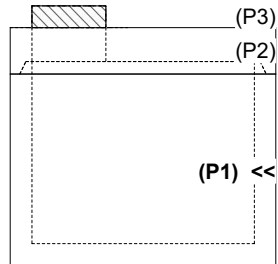
PG. 1 OF 2

Rim: 483.5' Rim to Invert: 6.26' Slack: 0.97" Sump: 2.85" Step Position: 90°

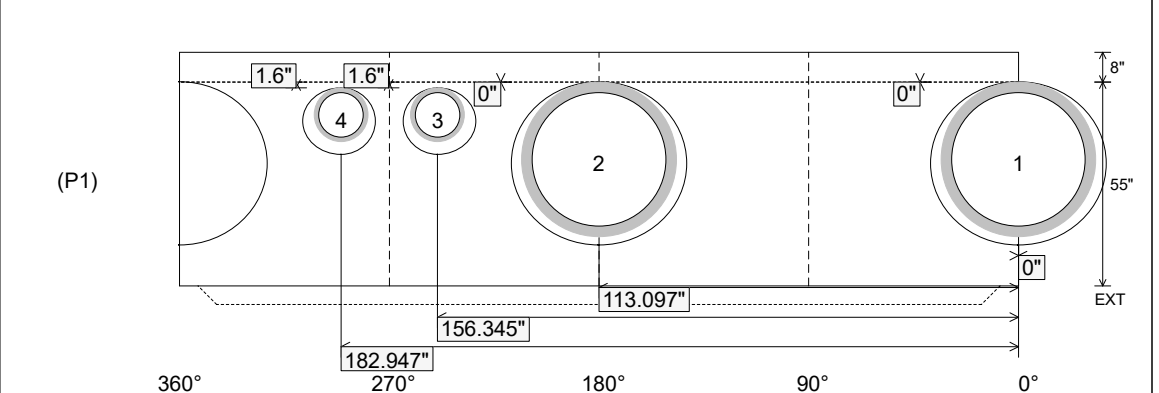
Position	Elev	Angle	Ext. (cw)	Pipe	Pipe OD	Connector	Hole	Horz Size	Up ()	Offset
Invert 1	477.24'	0°	0"	36" HDPE	41.7"	Hole 44	44"	47.337"	0"	0"
Invert 2	477.24'	180°	135.088"	36" HDPE	41.7"	Hole 44	44"	47.337"	0"	0"
Invert 3	477.24'	270°	189.426"	12" HDPE	14.5"	Hole 18	18"	19.66"	1.6"	-13"
Invert 4	477.24'	270°	215.839"	12" HDPE	14.5"	Hole 18	18"	19.66"	1.6"	13"
Invert 5										
Invert 6										
Invert 7										
Invert 8										

RIGHT-SIDE UP VIEW (int. dimensions)

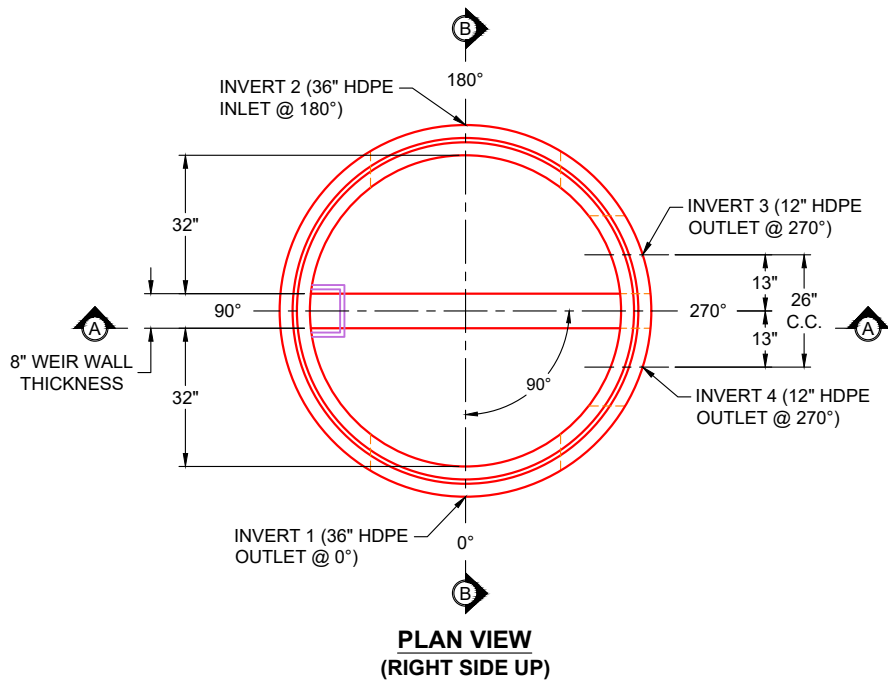
UPSIDE-DOWN VIEW (int. dimensions)



INSIDE WALL DIMENSIONS



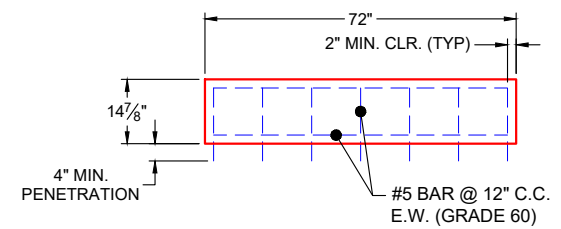
Coating (Int): Coating (Ext):	Seam Up: Tongue Seam Dn: n/a	Wall Thickness: 7" Floor Height: 8"	Height (Int): 55" Height (Ext): 63"	Weight (Net): 9697 lb Volume (Net): 2.48cu.yd
----------------------------------	---------------------------------	--	--	--



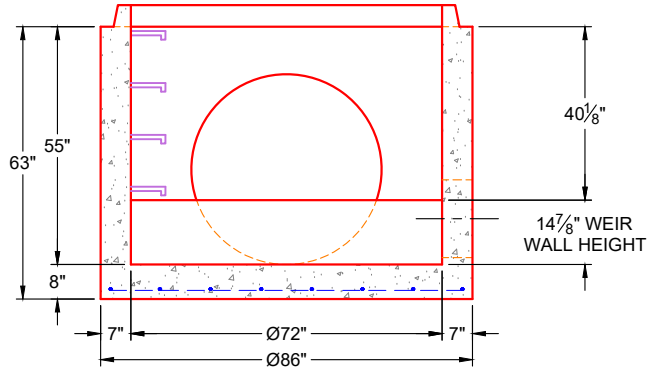
**PLAN VIEW
(RIGHT SIDE UP)**

GENERAL NOTES:

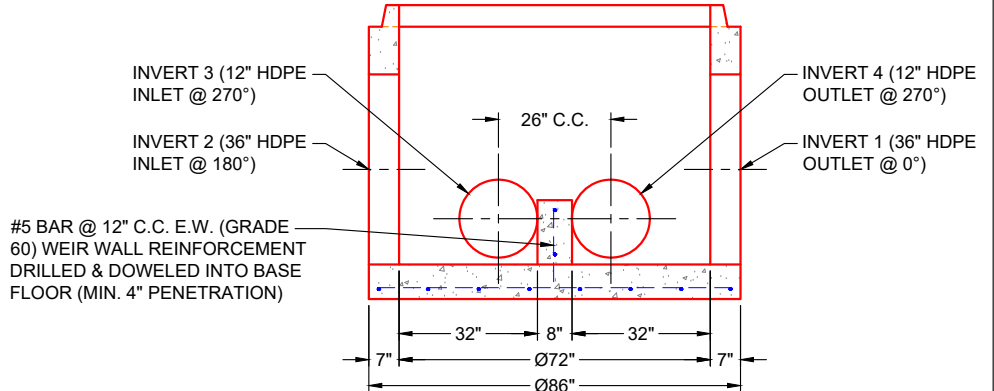
1. PER ASTM C-478 (LATEST REVISION)
2. CONCRETE: 4,000 PSI AT 28 DAYS
3. REINFORCEMENT: DRILL & DOWEL #5 BAR @ 12" C.C. E.W. (GRADE 60) INTO BASE FLOOR FOR WEIR WALL POUR TIE-IN - 2" MIN. REBAR CLEARANCE (TYP) & MIN. 4" PENETRATION INTO BASE FLOOR
4. WEIGHT: 720 LBS (10,417 LBS BASE & WEIR WALL TOTAL)
5. SEE STACK-IT DRAWING FOR STRUCTURE "G15" (PG. 1 OF 2) FOR ADDITIONAL DETAILS




WEIR WALL REINFORCEMENT



**SECTION A-A
(RIGHT SIDE UP)**



**SECTION B-B
(RIGHT SIDE UP)**

PRODUCTION WORK ORDER		PRODUCT I.D.: MH072BAVF	DESCRIPTION: Ø72" X 14 ⁷ / ₈ " X 8" WEIR WALL		
	QUALITY CONTROL CHECKLIST <input type="checkbox"/> ALL DIMENSIONS CORRECT. <input type="checkbox"/> LIFTERS INSTALLED. <input type="checkbox"/> HOLE LOCATION(S) CORRECT. <input type="checkbox"/> REINFORCING & SPACING CORRECT. <input type="checkbox"/> SURFACE QUALITY ACCEPTABLE. <input type="checkbox"/> EDGES CHAMFERED. <input type="checkbox"/> ALL PATCHWORK ACCEPTABLE.	PRODUCT VIEW: RIGHT SIDE UP	CUSTOMER: DAN CRISTIANI EXCAVATING CO. INC.		
		PLANT: BEAVER DAM, KY	PROJECT: SENECA HIGH SCHOOL		
		WEIGHT: 720 LBS (10,417 LBS BASE & WEIR TOTAL)	STRUCTURE: G15		
		TOP SECTION JOINT: N / A	ORDER NO: 25-4299		
		BASE SECTION JOINT: TONGUE	PE: J.H. ROSS	DRAWING: K. CARDWELL	
		QC CHECK INITIALS:	DATE: 02/16/26	SCALE: NTS	PG. 2 OF 2