

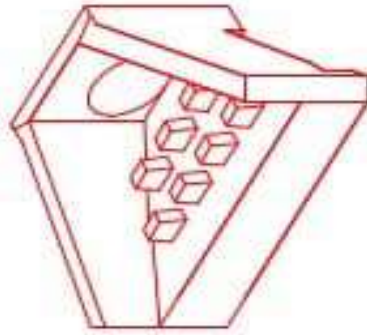


Structure ID: G1

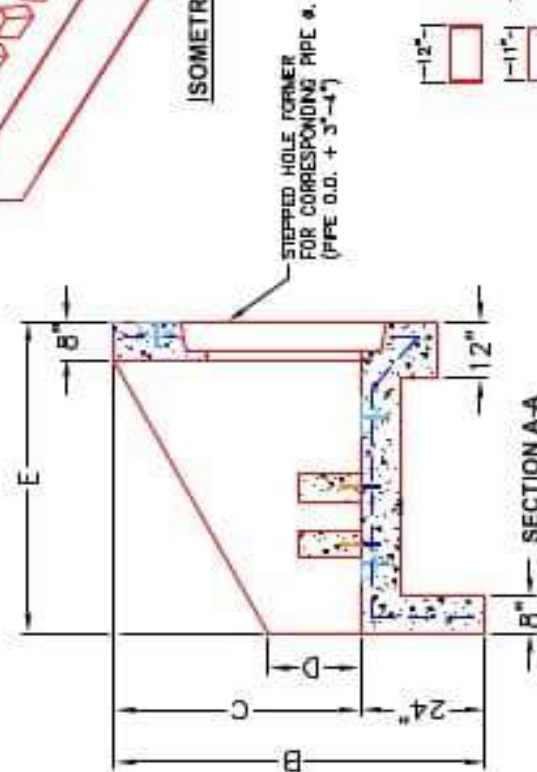
P1 HWPC42D

42" - PIPE CULVERT HEADWALL w/DISS F/F

DIMENSIONS									
PRE #	A	B	C	D	E	F	G	H	WEIGHT
30"	1'-4"	6'-4"	1'-4"	1'-4"	5'-4"	3'-6"	7'-8"	3'-4"	1120 lbs.
36"	4'-4"	6'-4"	1'-4"	1'-4"	5'-4"	4'-0"	7'-8"	3'-4"	1120 lbs.
42"	6'-4"	6'-4"	5'-4"	2'-4"	6'-4"	4'-4"	11'-4"	4'-10"	1120 lbs.
48"	6'-4"	6'-4"	5'-4"	2'-4"	6'-4"	5'-4"	11'-4"	4'-10"	1120 lbs.
54"	7'-4"	7'-4"	6'-4"	2'-4"	7'-4"	5'-4"	10'-8"	6'-4"	1642 lbs.
60"	7'-4"	7'-4"	6'-4"	2'-4"	7'-4"	6'-4"	10'-8"	6'-4"	1642 lbs.



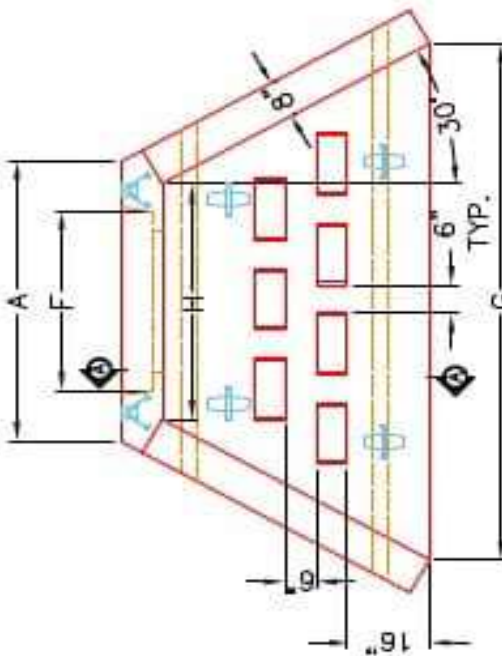
ISOMETRIC VIEW



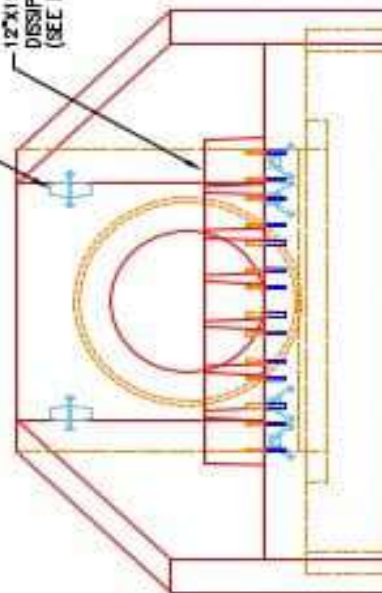
SECTION A-A



DISSIPATOR BLOCK DETAIL



PLAN VIEW



FRONT ELEVATION

NOTES:

1. CONCRETE: KYTC APPROVED.
2. REINFORCING: #5 BAR @ 12" C/C E.W.-GRADE 60, (WITH 2" CONCRETE COVER MINIMUM)
3. REINFORCING BARS TO BE TACK WELDED OR TIED.
4. PIPE AND LIFTING ANCHOR POCKETS TO BE GROUTED WITH KYTC APPROVED NON-SHRINK GROUT.
5. DRAWING TO BE USED IN CONJUNCTION WITH KYTC STD. DRAWING RDH-110-02, RDH-210-03 AND THE STANDARD SPECIFICATIONS FOR ROAD AND BRIDGE CONSTRUCTION.
6. 3" CHAMFER ON ALL EXPOSED EDGES.
7. PREFORMED STEPPED HOLE SIZED AS PER O.D. OF PIPE + 3"-4".
8. QUANTITY & SPACING OF DISSIPATOR BLOCKS MAY VARY PER PIPE SIZE.



INFRASTRUCTURE PRECAST, INC.
 601 WEST 7TH ST., BEAVER DAM, KY, 42350
 PHONE: (270) 363-2288, FAX: (270) 288-7284

KYTC 30"-60" PIPE CULVERT HEADWALL WITH ENERGY DISSIPATORS	DATE: 06-01-22
DRAWING NO.: KYTC PC-HH	DESIGNED BY: N. REINHARDT
REVIEWED BY: J.H. ROSSL, PE	SCALE: NTS
WEB: WWW.ICASTINC.COM	