

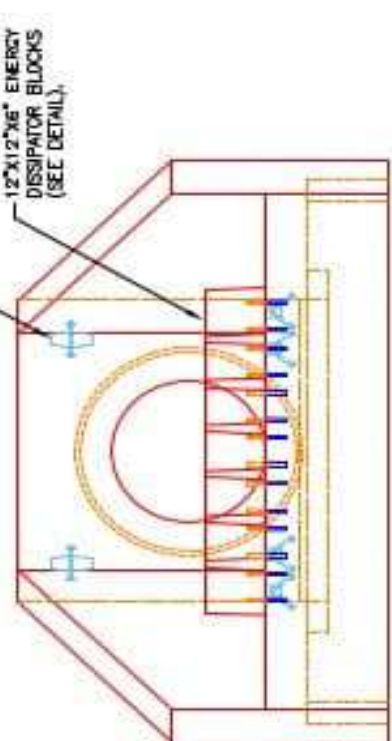
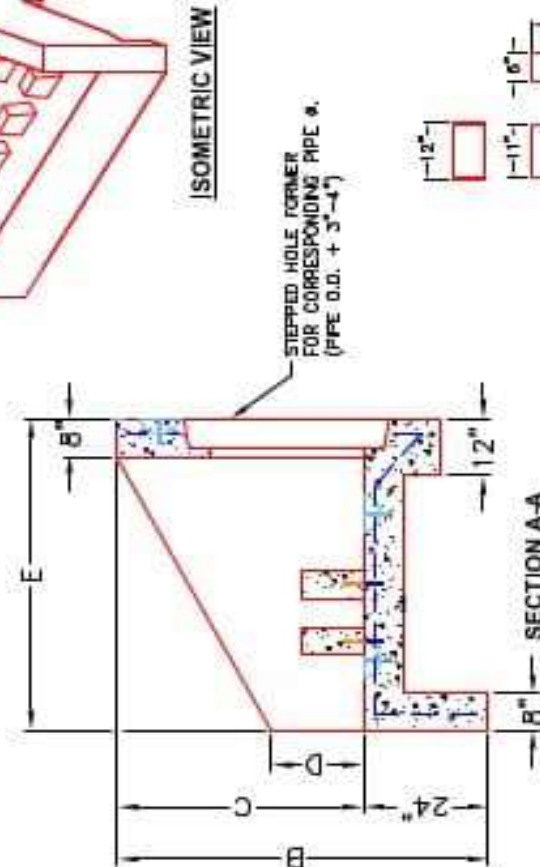
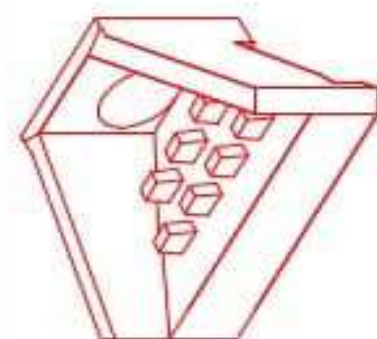
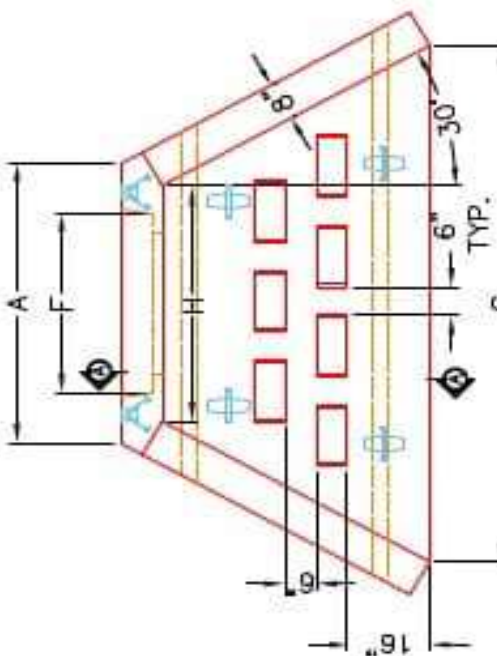


Structure ID: G1

P1 HWPC42D

42" - PIPE CULVERT HEADWALL w/DISS F/F

DIMENSIONS								
PRE #	A	B	C	D	E	F	H	WEIGHT
30"	1'-4"	6'-4"	1'-4"	1'-4"	5'-4"	3'-6"	3'-4"	1120 lbs.
36"	1'-4"	6'-4"	1'-4"	1'-4"	5'-4"	3'-6"	3'-4"	1120 lbs.
42"	1'-4"	6'-4"	1'-4"	1'-4"	5'-4"	3'-6"	3'-4"	1120 lbs.
48"	1'-4"	6'-4"	1'-4"	1'-4"	5'-4"	3'-6"	3'-4"	1120 lbs.
54"	1'-4"	6'-4"	1'-4"	1'-4"	5'-4"	3'-6"	3'-4"	1120 lbs.
60"	1'-4"	6'-4"	1'-4"	1'-4"	5'-4"	3'-6"	3'-4"	1120 lbs.



INFRASTRUCTURE PRECAST, INC.
 601 WEST 7TH ST., BEAVER DAM, KY. 42350
 PHONE: (270) 363-2288, FAX: (270) 288-7284

KYTC 30"-60" PIPE CULVERT HEADWALL WITH ENERGY DISSIPATORS

DRAWING NO.: KYTC PC-HH DATE: 06-01-22
 REVISION BY: J.H. ROSS, PE DRAWN BY: N. REINHARDT
 WEB: WWW.ICASTING.COM SCALE: NTS

- NOTES:**
1. CONCRETE: KYTC APPROVED.
 2. REINFORCING: #5 BAR @ 12" C/C E.W.-GRADE 60, (WITH 2" CONCRETE COVER MINIMUM)
 3. REINFORCING BARS TO BE TACK WELDED OR TIED.
 4. PIPE AND LIFTING ANCHOR POCKETS TO BE GROUTED WITH KYTC APPROVED NON-SHRINK GROUT.
 5. DRAWING TO BE USED IN CONJUNCTION WITH KYTC STD. DRAWING RDH-110-02, RDH-210-03 AND THE STANDARD SPECIFICATIONS FOR ROAD AND BRIDGE CONSTRUCTION.
 6. 3" CHAMFER ON ALL EXPOSED EDGES.
 7. PREFORMED STEPPED HOLE SIZED AS PER O.D. OF PIPE + 3"-4".
 8. QUANTITY & SPACING OF DISSIPATOR BLOCKS MAY VARY PER PIPE SIZE.