

Job Name: 25-4299 - Seneca High School
 Job Location: Louisville, KY
 Contractor: Dan Cristiani Excavating Co. Inc.

Plant: 100
 2/16/2026 10:16:57 AM

Tech: J. Horsley
 PC: J. Jarvis



Structure ID: E1

P2 BX036060-08LD08-S

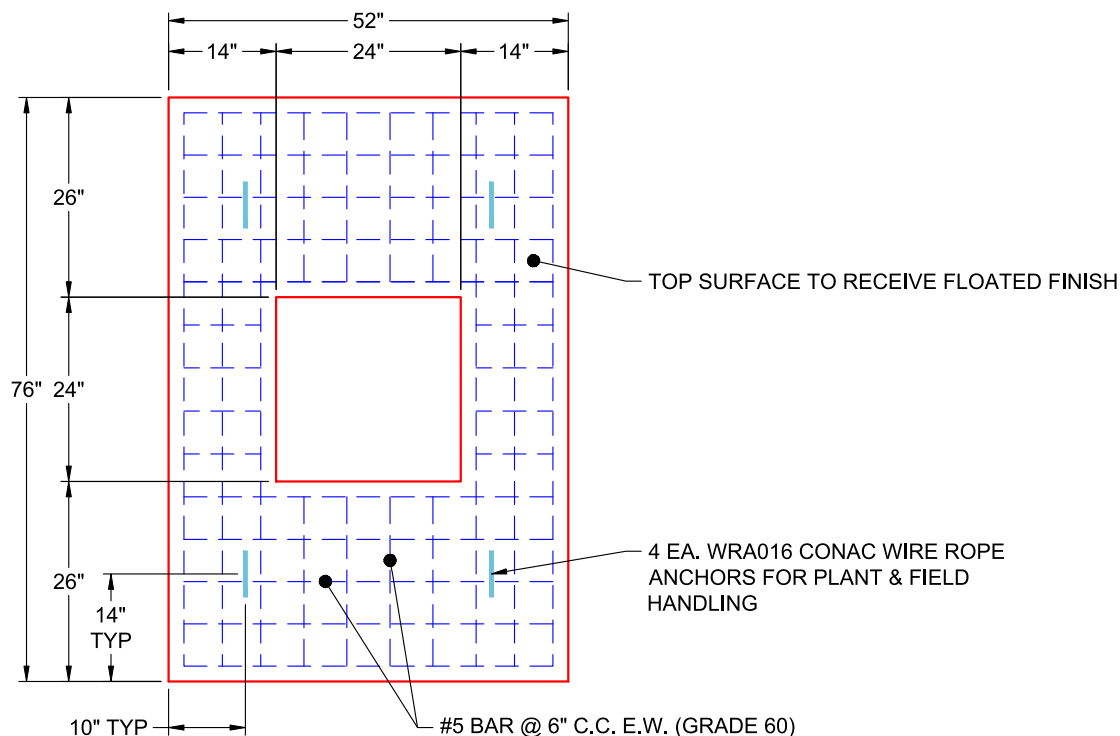
CB FLAT TOP 8"W w/24"x24" HOLE F/F

- P3) 24" x 24" - CASTING HEIGHT - 4"
- P2) 36" x 60" - CB FLAT TOP 8"W w/24"x24" HOLE F/F - 6"
- P1) 36" x 60" - BOX BASE 8inW, 8inF, Variable Ht F/n - 27"
- 1) SECONDARY POUR
- 1) 36" x 60" - Conseal CS-102 1.00"
- 1) 24" x 24" - Conseal CS-102 1.00"
- 1) Hole - 30
- 1) Hole - 16
- 1) Hole - 20

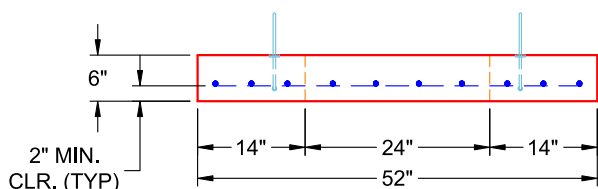
0 lb
 1691 lb
 5624 lb
 0 lb
 0 lb
 0 lb
 0 lb
 0 lb
 0 lb
 0 lb

 Structure Total: 7315 lb

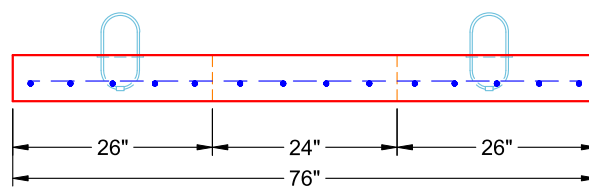
- Structure Notes:
1. PER LOUISVILLE MSD / ASTM C-913 SPECIFICATIONS
 2. CONCRETE: 4,000 PSI AT 28 DAYS
 3. REINFORCEMENT: #5 BAR @ 6" C.C. E.W. (GRADE 60) - 2" MIN. REBAR CLEARANCE (TYP)
 4. HOE 280T FRAME & GRATE SUPPLIED BY OTHERS
 5. LIFTERS: 4 EA. WRA016 CONAC WIRE ROPE ANCHORS FOR PLANT & FIELD HANDLING
 6. TOP SURFACE TO RECEIVE FLOATED FINISH



**PLAN VIEW
(RIGHT SIDE UP)**



**FRONT VIEW
(RIGHT SIDE UP)**



**SIDE VIEW
(RIGHT SIDE UP)**

Coating (Int):
 Coating (Ext):

Seam Up: Flat
 Seam Dn: Flat

Wall Thickness: 8"

Height (Ext): 6"

Weight (Net): 1691 lb
 Volume (Net): 0.43cu.yd