

Job Name: 25-4299 - Seneca High School
 Job Location: Louisville, KY
 Contractor: Dan Cristiani Excavating Co. Inc.

Plant: 100

Tech: J. Horsley

2/16/2026 8:20:12 AM

PC: J. Jarvis



Structure ID: C2

P2 MH048LD12-2424 LOUMSD

MH FLAT TOP w/24"x24" Hole LOU-MSD F/G

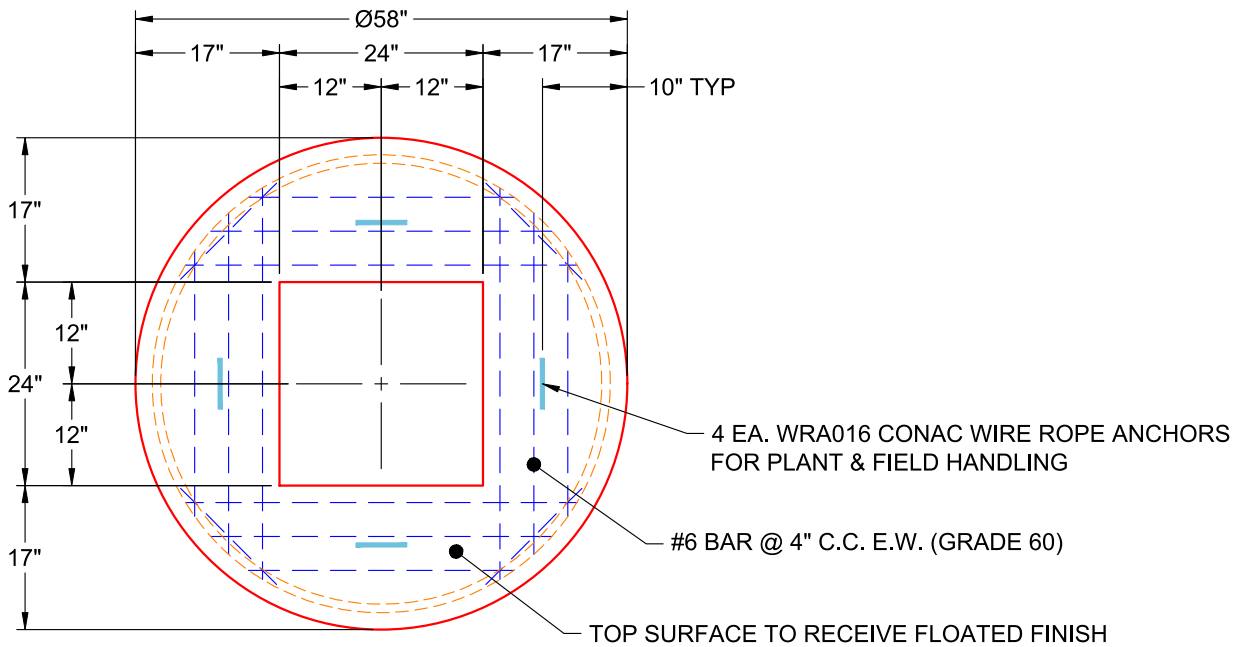
- P3) 24" x 24" - CASTING HEIGHT - 4"
- P2) 48" - MH FLAT TOP w/24"x24" Hole LOU-MSD F/G - 12"
- P1) 48" - MH BASE T/n - 30"
- 1) 48" - Conseal CS-102 1.00"
- 1) 24" x 24" - Conseal CS-102 1.00"
- 2) Hole - 24"
- 3) MH Step ML-10-TDS-NCR - 10"

- 0 lb
- 1500 lb
- 3032 lb
- 0 lb
- 0 lb
- 0 lb
- 0 lb
- 0 lb

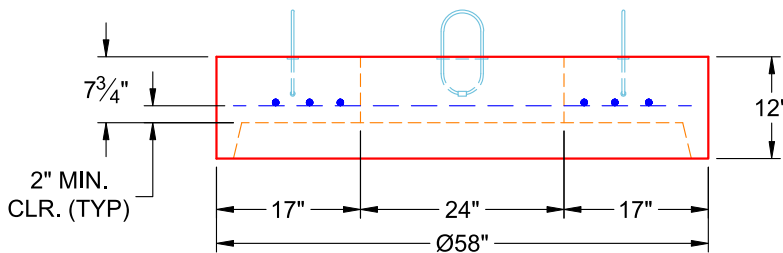
Structure Total: 4532 lb

Structure Notes:

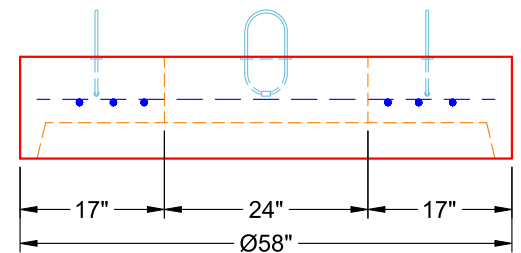
1. PER LOUISVILLE MSD / ASTM C-478 SPECIFICATIONS
2. CONCRETE: 4,000 PSI AT 28 DAYS
3. REINFORCEMENT: #6 BAR @ 4" C.C. E.W. (GRADE 60) - 2" MIN. REBAR CLEARANCE (TYP)
4. HOE 280T FRAME & GRATE SUPPLIED BY OTHERS
5. LIFTERS: 4 EA. WRA016 CONAC WIRE ROPE ANCHORS FOR PLANT & FIELD HANDLING
6. TOP SURFACE TO RECEIVE FLOATED FINISH



**PLAN VIEW
(RIGHT SIDE UP)**



**FRONT VIEW
(RIGHT SIDE UP)**



**SIDE VIEW
(RIGHT SIDE UP)**

Coating (Int):
Coating (Ext):

Seam Up: Flat
Seam Dn: Groove

Wall Thickness: 5"

Height (Ext): 12"

Weight (Net): 1500 lb
Volume (Net): 0.37cu.yd